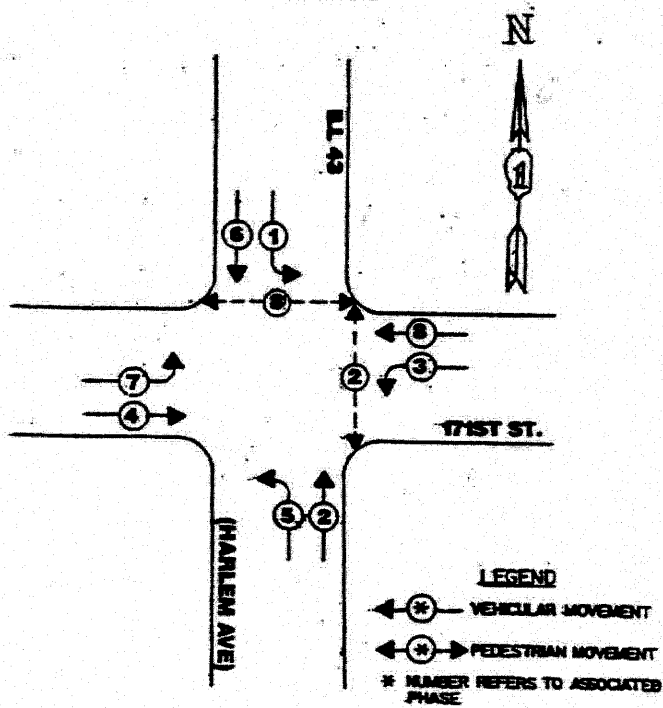
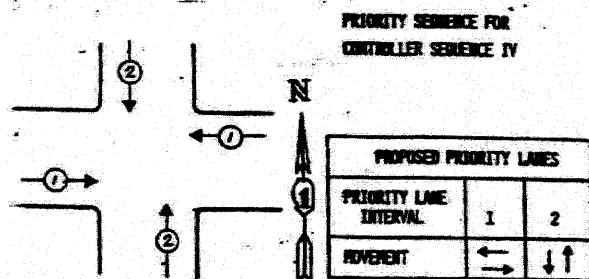


**CONTROLLER SEQUENCE IV**  
 REFERRING TO STANDARD 2393-1, THE VEHICULAR AND PEDESTRIAN PHASES USED ARE DESIGNATED BELOW.

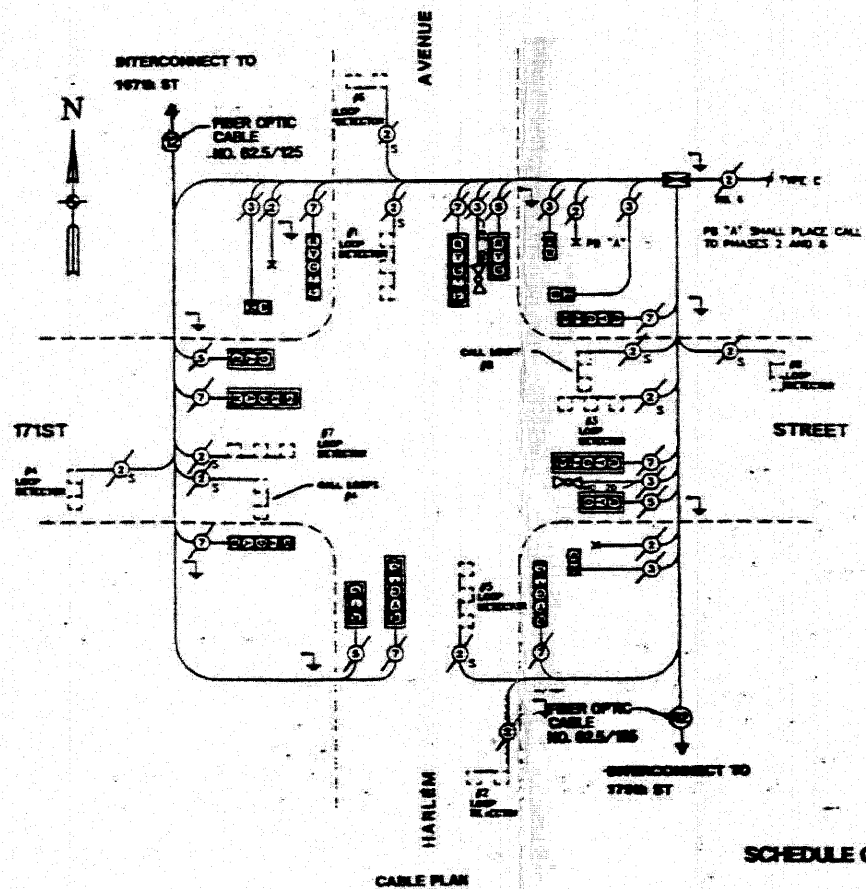


**PHASE DESIGNATION DIAGRAM**



**NOTES:**

1. TERMINATION OF PHASES 1+5 OR 3+7 SHALL BE WITH A YELLOW ARROW DISPLAYED TOGETHER WITH A CIRCULAR RED.
2. TERMINATION OF PHASES 1, 3, 5, OR 7 ALONE IN PHASES 1+6, 3+8, 2+5, OR 4+7 SHALL BE WITH A YELLOW ARROW DISPLAYED TOGETHER WITH A CIRCULAR GREEN WHEN FOLLOWED BY A PRIORITY LANE INTERVAL WHICH DISPLAYS THE CIRCULAR GREEN.
3. TERMINATION OF PHASES 1+6, 3+8, 2+5, OR 4+7 SHALL BE WITH A CIRCULAR YELLOW DISPLAY WHEN FOLLOWED BY A PRIORITY LANE INTERVAL WHICH DISPLAYS A CIRCULAR RED.
4. TERMINATION OF PHASES 2+6 OR 4+3 SHALL BE WITH A CIRCULAR YELLOW WHEN FOLLOWED BY A PRIORITY LANE INTERVAL WHICH DISPLAYS A CIRCULAR RED. WHEN PHASES 2+6 OR 4+3 CIRCULAR GREEN IS TO BE DISPLAYED IN THE PRIORITY LANE INTERVAL, IT SHALL REMAIN GREEN.
5. TERMINATION OF ALL PEDESTRIAN INTERVALS SHALL INCLUDE A FULL FLASHING "DON'T WALK" CLEARANCE INTERVAL.
6. TERMINATION OF ALL PRIORITY INTERVALS SHALL BE WITH A CIRCULAR YELLOW EXCEPT WHEN THE GREEN DISPLAYED DURING THE PRIORITY INTERVAL IS TO REMAIN GREEN AND THE NORMAL SEQUENCE OF OPERATIONS RESUMES CONTROL OF THE INTERSECTION.
7. IF ALL RED CLEARANCE IS USED IN THE NORMAL SEQUENCE OF OPERATIONS, IT MUST BE DISPLAYED AFTER THE YELLOW CLEARANCE INTERVAL WHEN ENTERING OR LEAVING THE PRIORITY SEQUENCE.



- CABLE PLAN LEGEND**
- (G) 8" TRAFFIC SIGNAL SECTION
  - (R) 12" TRAFFIC SIGNAL SECTION
  - (W) 12" PEDESTRIAN SIGNAL SECTION
  - (C) CONTROLLER CABINET
  - (S) SERVICE INSTALLATION
  - (V) VEHICLE DETECTOR, INDUCTION LOOP
  - (P) PUSHBUTTON DETECTOR
  - (N) DENOTES NUMBER OF CONDUCTORS (NEW).
  - (S) ALL LOOP DETECTOR CABLE TO BE SHIELDED. ALL CABLE NO. 14 EXCEPT AS INDICATED.
  - (E) INDICATES EXISTING CABLE
  - (P\*) SIGNAL FACE WITH BACKPLATE
  - (P\*) INDICATES PROGRAMMED
  - (X) LIGHT DETECTOR, EXISTING

**SCHEDULE OF QUANTITIES**

QUANTITY	UNIT	ITEM
1	EACH	FULL-ACTIVATED CONTROLLER, STANDARD SEQUENCE IV, 8 PHASES, IN TYPE IV CABINET
1	EACH	TRANSCEIVER, FIBER OPTIC
5	EACH	INDUCTION LOOP DETECTOR AMPLIFIER
2	EACH	INDUCTION LOOP DETECTOR AMPLIFIER WITH CALLING DETECTOR RELAY
1	EACH	REMOVAL OF EXISTING TRAFFIC SIGNAL SIGNALIZATION
1	EACH	REPAIR EXISTING TRAFFIC SIGNAL EQUIPMENT
1	EACH	RELOCATE LIGHT DETECTOR AMPLIFIER
150	LIN. FT.	PREFORMED PLASTIC PAVEMENT MARKING, TYPE B - LINE 24"
300	LIN. FT.	PREFORMED PLASTIC PAVEMENT MARKING, TYPE B - LINE 6"

THE FOLLOWING EXISTING TRAFFIC SIGNAL EQUIPMENT SHALL BE REMOVED BY THE CONTRACTOR. SHALL REMAIN THE PROPERTY OF THE STATE, AND SHALL BE STORED AS STATED IN THE SPECIAL PROVISION FOR PICK UP BY STATE FORCES AS DESIGNATED BY THE ENGINEER.

- 1 EACH CONTROLLER AND CABINET COMPLETE
- 5 EACH INDUCTION LOOP DETECTOR AMPLIFIER

**FOR REFERENCE ONLY**

FILE NAME = 06509 SGNL-05 - P03

USER NAME =	DESIGNED - WPD	REVISED -
PLOT SCALE = 1"=1	CHECKED - WPD	REVISED -
PLOT DATE = 10-14-10	DRAWN - AG	REVISED -
	CHECKED - AG	REVISED -

STATE OF ILLINOIS  
 DEPARTMENT OF TRANSPORTATION

ILL 43 (HARLEM AVE) & 171ST STREET  
 PHASE DESIGNATION DIAGRAM  
 EMERGENCY VEHICLE PREEMPTION SEQUENCE, CABLE PLAN AND SCHEDULE OF QUANTITIES

F.A.P. RTE. 348	SECTION 06-00104-00-CH	COUNTY COOK	TOTAL SHEETS 60	SHEET NO. 44
CONTRACT NO. 63453				
FED. ROAD DIST. NO. 1 ILLINOIS FED. AID PROJECT #HSIP-8003 (851)				