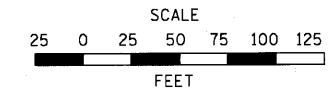
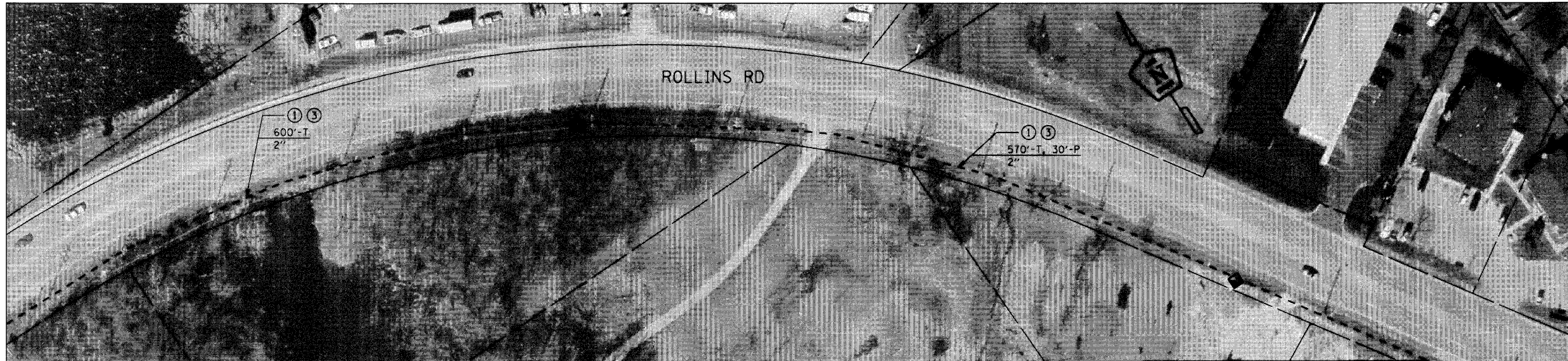


NOTES:

- ① PROPOSED FIBER OPTIC CABLE IN CONDUIT, SM24F
- ② TERMINATE FIBERS AT DISTRIBUTION ENCLOSURE IN CABINET
- ③ PROPOSED ELECTRIC CABLE IN CONDUIT, TRACER, NO. 14 1C
- ④ SPLICE FIBERS IN CABINET
- ⑤ EXISTING 12F MM FIBER OPTIC AND TRACER CABLES TO REMAIN
- ⑥ REMOVE COPPER INTERCONNECT CABLE FROM CONDUIT
- ⑦ COIL 40' OF FIBER OPTIC CABLE SLACK IN DOUBLE HANDHOLE
- ⑧ POSSIBLE UTILITY CONFLICT



SEE SHEET NO. 51
MATCHLINE TOP LEFT



MATCHLINE A-A

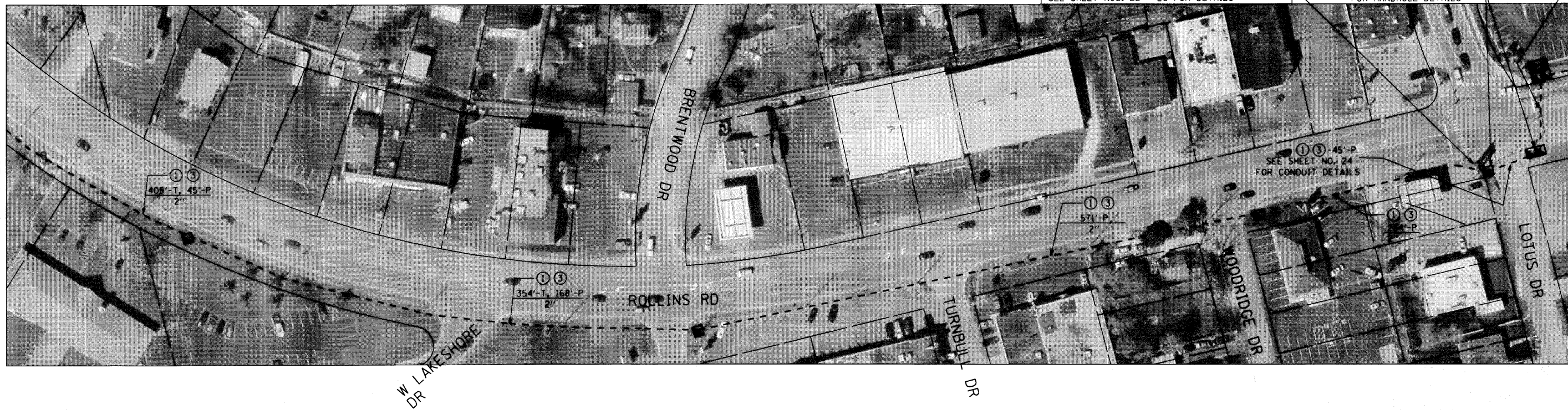


① ③ -80'-P
SEE SHEET NO. 24
FOR CONDUIT DETAILS

INTERSECTION IS SCHEDULED FOR MODERIZATION
SEE SHEET NOS. 22 - 26 FOR DETAILS

SEE SHEET NO. 24
FOR HANDHOLE DETAILS

MATCHLINE A-A



MATCHLINE TOP LEFT
SEE SHEET NO. 53



USER NAME = JM	DESIGNED - DG	REVISED -
PLOT SCALE =	DRAWN - JM	REVISED -
PLOT DATE = 10-05-2010	CHECKED - DC	REVISED -
	DATE - 10-05-2010	REVISED -

STATE OF ILLINOIS
DEPARTMENT OF TRANSPORTATION

ROLLINS ROAD INTERCONNECT FROM GRAND AVE. TO CEDAR LAKE RD.	
ROUTE FAU 181	SECTION SECTION NUMBER 09-00999-07-TL
SCALE: 1"=50'	SHEET 10 OF 12

SHEET 52	SHEETS 72
CONTRACT NO. 09472	