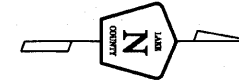
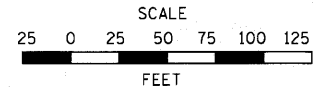
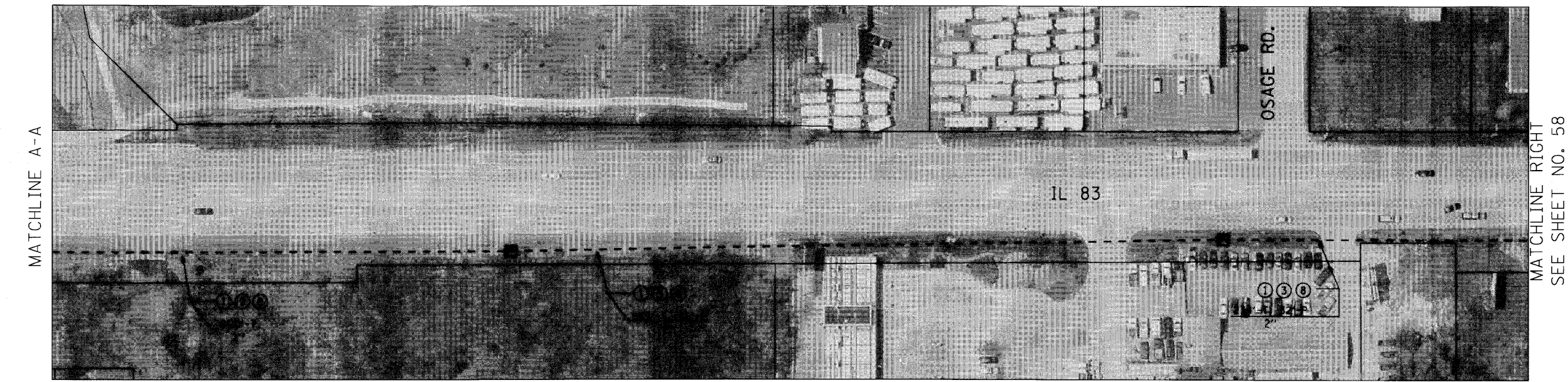
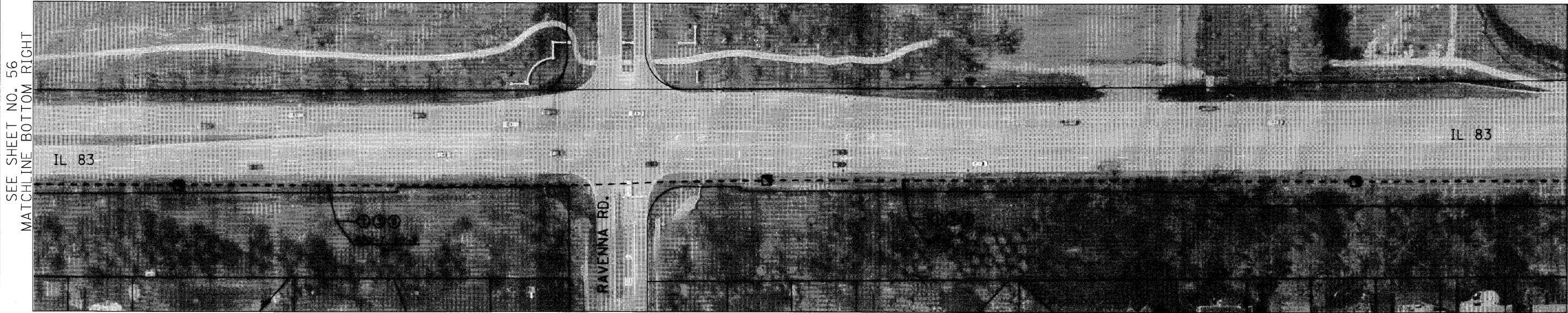


**NOTES:**

- ① PROPOSED FIBER OPTIC CABLE IN CONDUIT, SM24F
- ② TERMINATE FIBERS AT DISTRIBUTION ENCLOSURE IN CABINET
- ③ PROPOSED ELECTRIC CABLE IN CONDUIT, TRACER, NO. 14 1C
- ④ SPLICE FIBERS IN CABINET
- ⑤ EXISTING 12F MM FIBER OPTIC AND TRACER CABLES TO REMAIN
- ⑥ REMOVE COPPER INTERCONNECT CABLE FROM CONDUIT
- ⑦ COIL 40' OF FIBER OPTIC CABLE SLACK IN DOUBLE HANDHOLE
- ⑧ POSSIBLE UTILITY CONFLICT



COMPANY	POSSIBLE UTILITY CONFLICT
AT&T	
NICOR	X



USER NAME = JM	DESIGNED - DG	REVISED -
PLOT SCALE =	DRAWN - JM	REVISED -
PLOT DATE = 10-05-2010	CHECKED - DG	REVISED -
	DATE - 10-05-2010	REVISED -

**STATE OF ILLINOIS  
 DEPARTMENT OF TRANSPORTATION**

<b>IL 83 INTERCONNECT        FROM WESTMORELAND DR. TO US 45</b>	
SCALE: 1"=50'	SHEET 2 OF 3

ROUTE	SECTION	SECTION NUMBER	SHEET	SHEETS
FAU 181		09-00999-07-TL	57	72
C4-2			CONTRACT NO. 09472	