

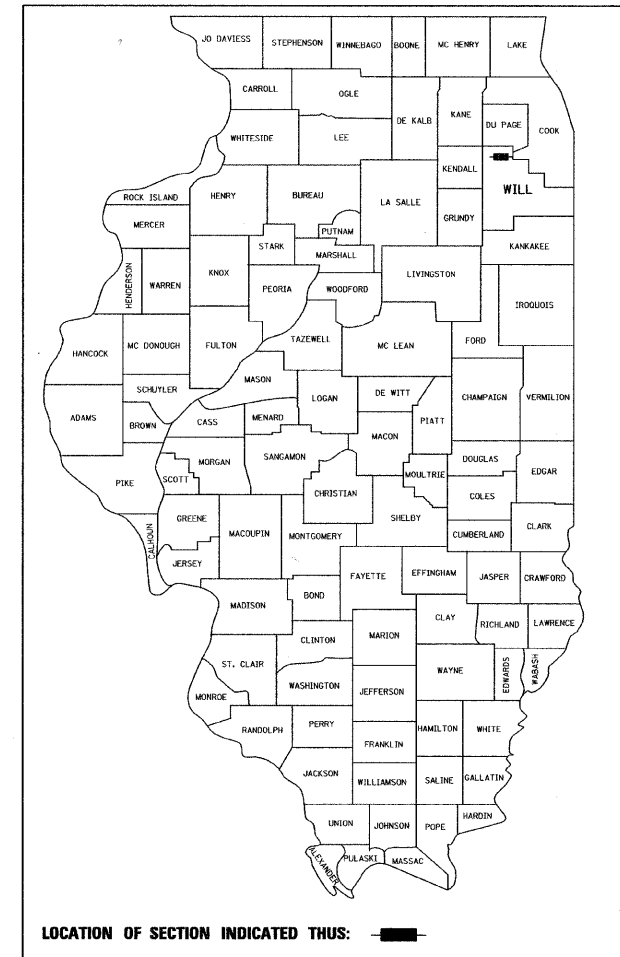
F.A.U. RTE.	SECTION	COUNTY	TOTAL SHEETS	SHEET NO.
1578	06-00046-01-PV	WILL	244	1
		ILLINOIS	CONTRACT NO. 63503	

+/- = 256

STATE OF ILLINOIS
DEPARTMENT OF TRANSPORTATION
DIVISION OF HIGHWAYS

**PLANS FOR PROPOSED
FEDERAL AID HIGHWAY**

F.A.U. 1578 (LILY CACHE LANE)
FROM F.A.U. 351 (VETERANS PARKWAY) TO CREEKSIDE DRIVE
RECONSTRUCTION, BIKE PATH
SECTION 06-00046-01-PV
PROJECT CMM-M-TE-9003(632)
VILLAGE OF BOLINGBROOK
WILL COUNTY



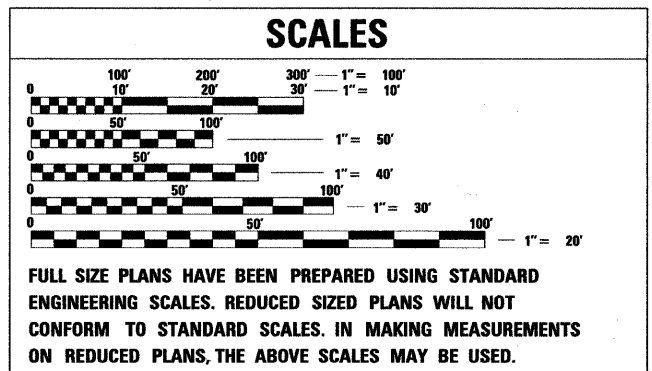
LOCATION OF SECTION INDICATED THUS: [Black Rectangle]

INDEX OF SHEETS
(SEE NEXT SHEET FOR INDEX OF SHEETS)

INDEX OF DISTRICT 1 STANDARDS
(SEE NEXT SHEET FOR INDEX OF DISTRICT 1 STANDARDS)

INDEX OF HIGHWAY STANDARDS
(SEE NEXT SHEET FOR INDEX OF HIGHWAY STANDARDS)

**PROJECT BEGINS
STA. 24 + 24.54
LILY CACHE LANE**

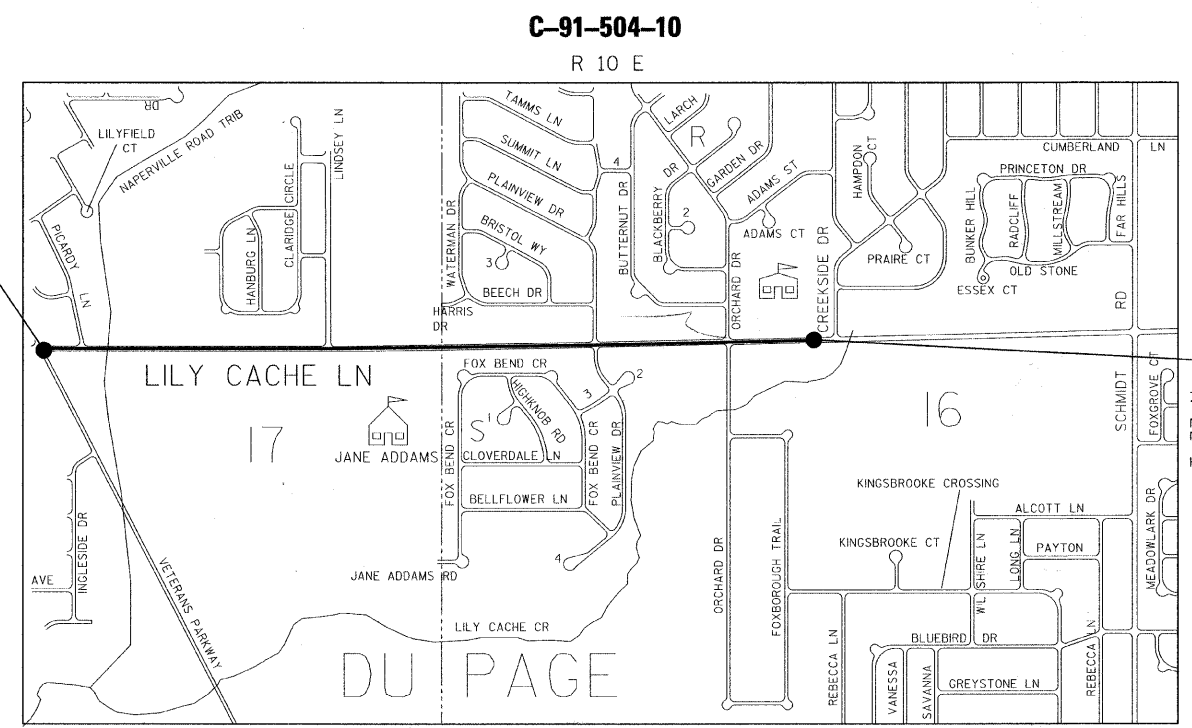


**PROJECT LOCATED IN THE
VILLAGE OF BOLINGBROOK**

ie CONSULTANTS, INC.
6420 SOUTH SIXTH STREET RD.
SPRINGFIELD, ILLINOIS 62712
TEL. (217) 529-8027
FAX (217) 529-4543
WWW.IE-CONSULTANTS.COM

CALL J.U.L.I.E. (JOINT UTILITY LOCATING INFORMATION FOR EXCAVATORS)
48 Hours (2 working days) Before You Dig.
TOLL FREE: 1 (800) 992-0123

CONTRACT NO. 63503

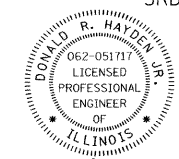


LOCATION MAP

(NOT TO SCALE)
GROSS LENGTH OF SECTION = 5,810.46 FEET = 1.100 MILE
NET LENGTH OF SECTION = 5,810.46 FEET = 1.100 MILE

DESIGN CLASSIFICATION

DESIGN SPEED = 40 MPH
POSTED SPEED = 35 MPH
COLLECTOR WADT = 20,366 (2030)



Donald R. Hayden, Jr.
DONALD R. HAYDEN JR. ILLINOIS P.E. 062-051717
IE CONSULTANTS, INC. EXPIRES 11/30/2011

10/22/10
DATE

**PROJECT ENDS
STA. 82 + 35.00
LILY CACHE LANE**

STATE OF ILLINOIS
DEPARTMENT OF TRANSPORTATION
DIVISION OF HIGHWAYS

APPROVED *November 12, 2010*
Michael P. Wray
BOLINGBROOK, VILLAGE ENGINEER

PASSED *November 16, 2010*
Christina Heisterkamp
DISTRICT 1 ENGINEER OF LOCAL ROADS & STREETS

RELEASING FOR BID
BASED ON LIMITED
REVIEW *November 17, 2010*
Diana M. O'Keefe
DEPUTY DIRECTOR OF HIGHWAYS, REGION 1 ENGINEER

**PRINTED BY THE AUTHORITY
OF THE STATE OF ILLINOIS**

PROGRAM & OFFICE ENGINEER: CHARLES F. RIDDLE, PE / (847) 705-4406 SCHAUMBURG, IL

