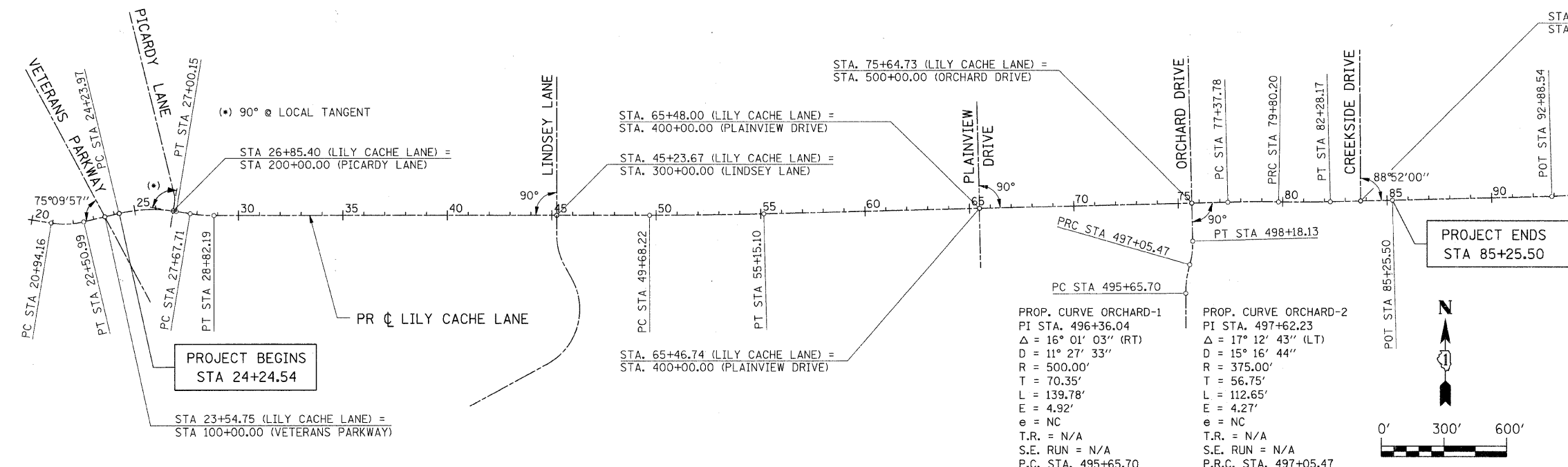


POINT	STATION	OFFSET	REBAR
POINT 12	STA. 25+19.68	46.72' RT	#5 REBAR
POINT 11	STA. 30+40.16	25.43' RT	#5 REBAR
POINT 10	STA. 37+64.66	27.37' RT	#5 REBAR
POINT 9	STA. 45+64.78	41.83' LT	#5 REBAR
POINT 8	STA. 51+16.02	29.82' RT	#5 REBAR
POINT 7	STA. 59+87.39	29.97' RT	#5 REBAR

PROP. CURVE	PI STA.	DELTA	D	R	T	L	E	e	T.R.	S.E. RUN	P.C. STA.	P.T. STA.
PROP. CURVE LILY-2	21+73.59	22° 27' 54" (LT)	14° 19' 26"	400.00'	79.44'	156.84'	7.81'	NC	N/A	N/A	20+94.16	22+50.99
PROP. CURVE LILY-3	25+63.88	22° 36' 22" (RT)	8° 11' 06"	700.00'	139.91'	276.18'	13.85'	RC	49'	49'	24+23.97	27+00.15
PROP. CURVE LILY-4	28+25.08	9° 22' 11" (LT)	8° 11' 06"	700.00'	57.36'	114.47'	2.35'	NC	49'	49'	27+67.71	28+82.19
PROP. CURVE LILY-5	52+41.67	1° 22' 02" (LT)	0° 15' 00"	22,918.31'	273.45'	546.88'	1.63'	NC	N/A	N/A	49+68.22	55+15.10
PROP. CURVE LILY-6	78+59.01	2° 25' 27" (RT)	1° 00' 00"	5,729.58'	121.23'	242.42'	1.28'	NC	N/A	N/A	77+37.78	79+80.20
PROP. CURVE LILY-7	81+04.20	2° 28' 47" (LT)	1° 00' 00"	5,729.58'	124.00'	247.97'	1.34'	NC	N/A	N/A	79+80.20	82+28.17



CENTERLINE CONTROL			
DESC	STATION	NORTHING	EASTING
LILY CACHE LANE			
P. C.	20+94.16	49,804.951	36,342.142
P. I.	21+73.59	49,792.253	36,420.559
P. T.	22+50.99	49,810.483	36,497.877
P. C.	24+23.97	49,850.179	36,666.237
P. I.	25+63.88	49,882.287	36,802.415
P. T.	27+00.15	49,859.583	36,940.473
P. C.	27+67.71	49,848.619	37,007.139
P. I.	28+25.08	49,839.310	37,062.743
P. T.	28+82.19	49,839.341	37,121.108
P. C.	49+68.22	49,840.460	39,207.140
P. I.	52+41.67	49,840.606	39,480.590
P. T.	55+15.10	49,847.277	39,753.960
P. C.	77+37.78	49,901.502	41,975.988
P. I.	78+59.01	49,904.459	42,097.177
P. R. C.	79+80.20	49,902.288	42,218.384
P. I.	81+04.20	49,900.067	42,342.368
P. T.	82+28.17	49,903.212	42,466.332
P. O. T.	85+25.50	49,910.754	42,763.570
P. O. T.	92+88.54	49,929.550	43,526.371
P. O. T.	96+21.21	49,948.585	43,858.500
P. O. T.	106+76.09	49,974.754	44,913.054
ORCHARD DRIVE			
P. O. T.	494+00.00	49,300.390	41,775.005
P. C.	495+65.70	49,466.085	41,774.417
P. I.	496+36.04	49,536.433	41,774.167
P. R. C.	497+05.47	49,604.118	41,793.339
P. I.	497+62.23	49,658.742	41,808.805
P. T.	498+18.13	49,715.461	41,807.420
I. P.	500+00.00	49,897.280	41,802.983
P. O. T.	506+00.00	50,497.101	41,788.346

BENCH MARKS				
NO.	DESCRIPTION	STATION	OFFSET	ELEV
TBM 10	CHIS. "+ " N.E. COR. OF CONC. BASE OF ELEC. LOCKER WITH METER, S.E. COR. LILY CACHE & VETERANS PARKWAY	24+53.0	45.8' RT	663.89
TBM 9	CHIS. "+ " E. END OF S. HEADWALL AT TRIPLE CULVERT UNDER LILY CACHE	29+84.1	42.3' RT	660.78
TBM 8	CHIS. "+ " S.E. BOLTOF HYD. ON S. SIDE OF LILY CACHE	38+64.4	26.1' RT	672.31
TBM 7	CHIS. "+ " N. SIDE OF LIGHT POLE BASE AT N.E. COR. OF LILY CACHE & LINDSEY LN.	45+60.0	29.9' LT	673.40
TBM 6	CHIS. "+ " S. RIM OF M.H. AT S.W. COR. OF LILY CACHE & JANE ADAMS SCHOOL ENTRANCE	52+58.5	54.8' RT	677.34
TBM 5	CHIS. "+ " N.W. BOLTOF HYD. ON N. SIDE OF LILY CACHE AT HOUSE #848	58+45.6	34.7' LT	678.34
TBM 4	CHIS. "+ " N. SIDE OF LIGHT POLE BASE AT S.W. COR. OF LILY CACHE & PLAINVIEW DRIVE	65+23.3	55.5' RT	673.25
TBM 3	CHIS. "+ " S.E. BOLTOF HYD. ON S. SIDE OF LILY CACHE ACROSS FROM HOUSE #762	69+71.9	24.8' RT	669.12
TBM 2	CHIS. "+ " S.W. BOLTOF HYD. ON N.W. COR. OF LILY CACHE & ORCHARD DRIVE	75+43.7	64.1' LT	665.06
TBM 1	CHIS. "+ " S.W. BOLTOF HYD. ON N.E. COR. OF LILY CACHE & CREEKSIDE DRIVE	83+95.2	73.6' LT	667.06

CONTROL POINTS					
POINT	STATION	OFFSET	ELEV	NORTHING	EASTING
4	83+49.79	23.17' RT	664.39	49,883.135	42,588.499
5	75+11.55	28.22' LT	663.44	49,924.197	41,749.135
6	64+91.74	26.34' RT	674.20	49,844.768	40,730.953
7	59+87.39	29.97' RT	677.98	49,828.837	40,226.840
8	51+16.02	29.82' RT	673.81	49,811.197	39,355.148
9	45+64.78	41.83' LT	673.75	49,882.071	38,803.674
10	37+64.66	27.37' RT	671.34	49,812.440	38,003.598
11	30+40.16	25.43' RT	661.89	49,813.996	37,279.090
12	25+19.68	46.72' RT	662.57	49,822.113	36,766.064