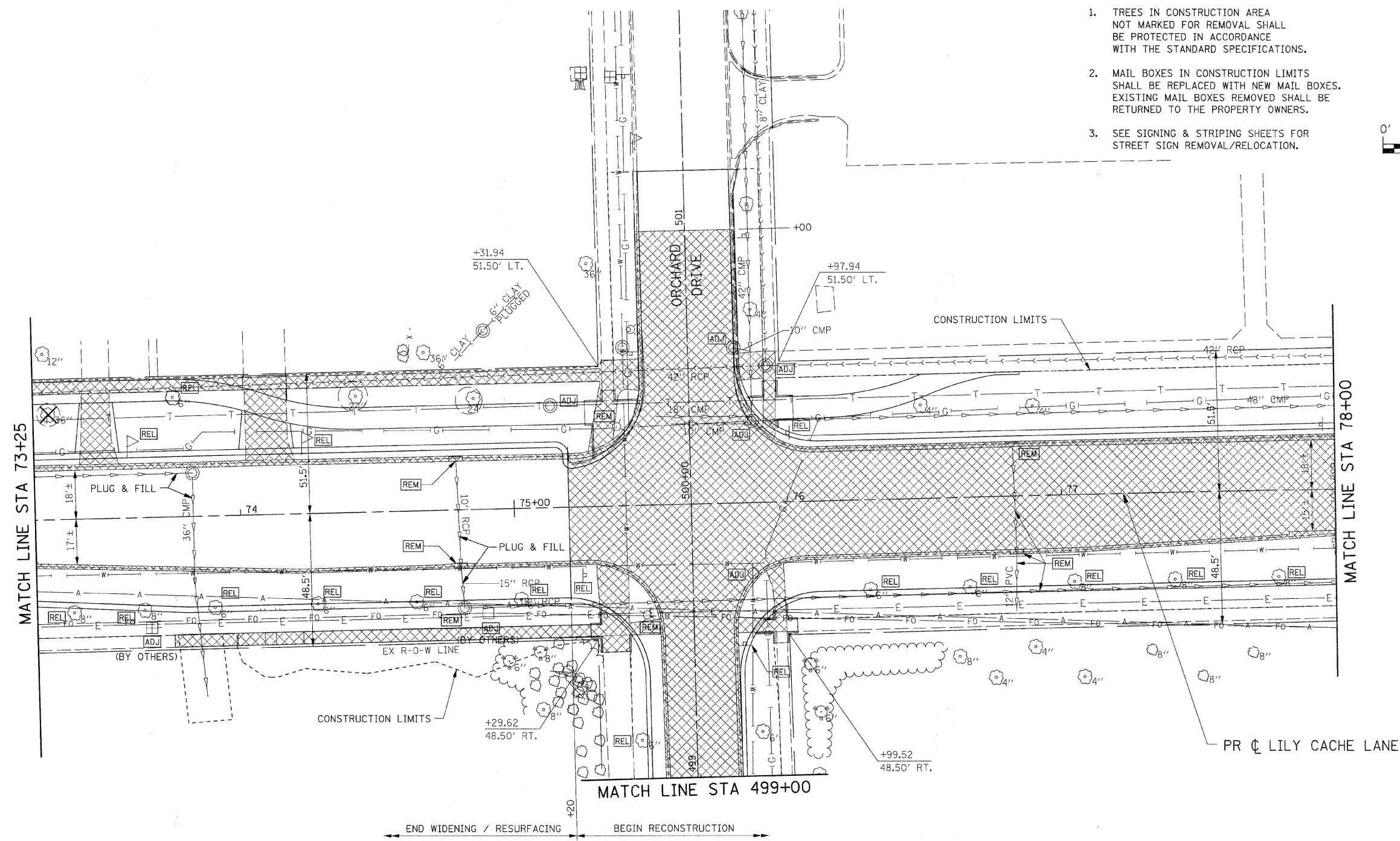
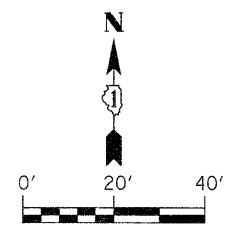


- NOTE:**
1. TREES IN CONSTRUCTION AREA NOT MARKED FOR REMOVAL SHALL BE PROTECTED IN ACCORDANCE WITH THE STANDARD SPECIFICATIONS.
 2. MAIL BOXES IN CONSTRUCTION LIMITS SHALL BE REPLACED WITH NEW MAIL BOXES. EXISTING MAIL BOXES REMOVED SHALL BE RETURNED TO THE PROPERTY OWNERS.
 3. SEE SIGNING & STRIPING SHEETS FOR STREET SIGN REMOVAL/RELOCATION.



LEGEND

| | |
|--|------------------------------|
| | ASPHALT / CONCRETE REMOVAL |
| | INDICATES ITEM TO BE REMOVED |

| | | | |
|--|----------------------------|------------|-----------|
| FILE NAME = G:\S09021\CADD_Sheets\9021REM11.dgn | USER NAME = IE Consultants | DESIGNED - | REVISED - |
| | | DRAWN - | REVISED - |
| | | CHECKED - | REVISED - |
| | | DATE - | REVISED - |

**STATE OF ILLINOIS
DEPARTMENT OF TRANSPORTATION**

**LILY CACHE LANE
REMOVAL AND ADJUSTMENT PLAN**

SCALE: SHEET NO. OF SHEETS STA. 73+25 TO STA. 78+00

| | | | | |
|--------------------|----------------|--------|---------------------------|-----------|
| F.A.U. | SECTION | COUNTY | TOTAL SHEETS | SHEET NO. |
| 1578 | 06-00046-01-PV | WILL | 244 | 66 |
| CONTRACT NO. 63503 | | | ILLINOIS FED. AID PROJECT | |