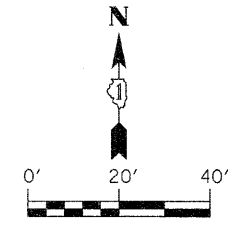


NE 1/4, SEC 17, T37N, R10E

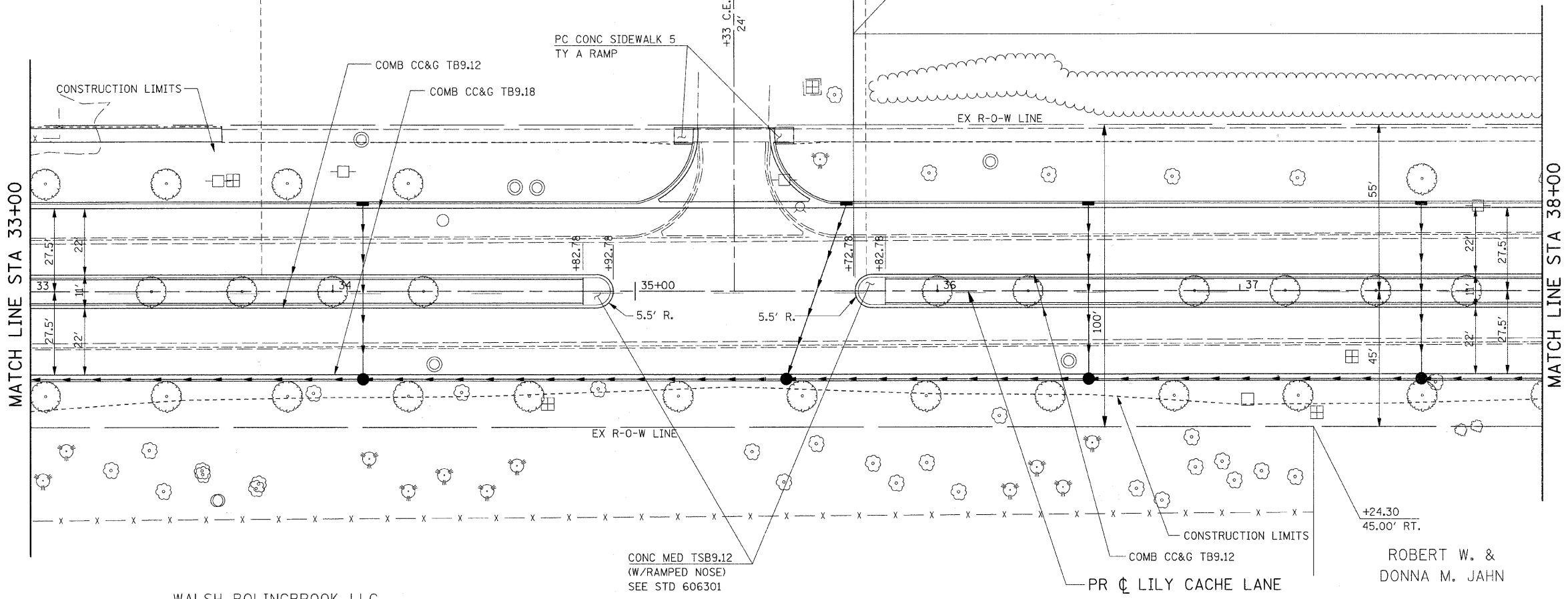
NOTE:  
SEE "INTERSECTION DETAILS"  
AND "ENTRANCE DETAILS"  
FOR ADDITIONAL INFORMATION.



WALSH BOLINGBROOK LLC

IL BELL TELEPHONE

RYLAND GROUP INC.



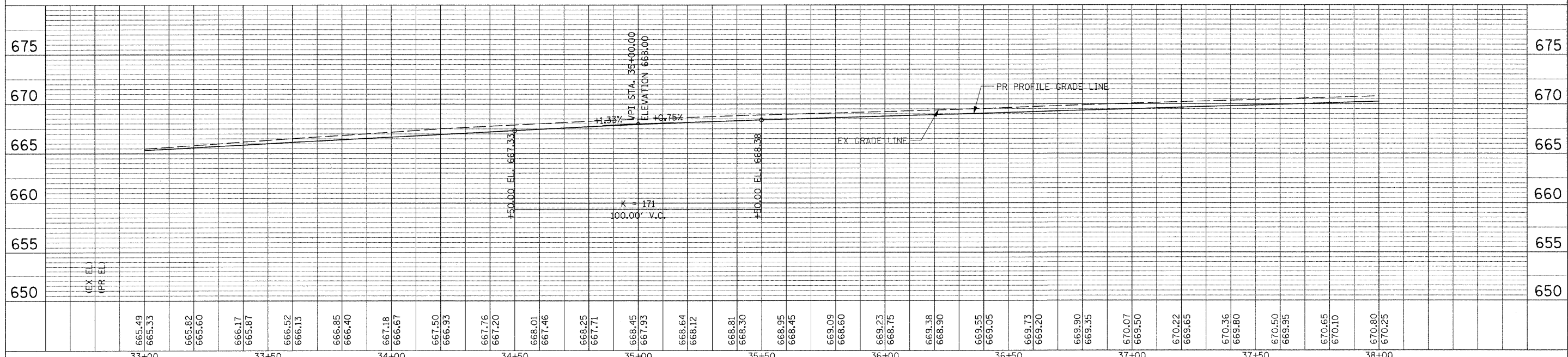
WALSH BOLINGBROOK LLC  
& GAHLBERG REAL ESTATE GROUP INC.

ROBERT W. &  
DONNA M. JAHN

SE 1/4, SEC 17, T37N, R10E

DATE	
BY	
PLANNED	
ALIGNED	
CHECKED	
NO.	

DATE	
BY	
PROFILES	
GRADES	
STRUCTURE	
NO.	



FILE NAME = G:\S09021\CADD_Sheets\9021P03.dgn	USER NAME = IE Consultants	DESIGNED -	REVISED -	<b>STATE OF ILLINOIS</b> <b>DEPARTMENT OF TRANSPORTATION</b>	<b>LILY CACHE LANE</b> <b>PLAN AND PROFILE</b>	F.A.U. RTE. 1578	SECTION 06-00046-01-PV	COUNTY WILL	TOTAL SHEETS 244	SHEET NO. 71	
PLOT SCALE = 28,0000" / 1IN.	CHECKED -	REVISED -	SCALE:			SHEET NO. OF SHEETS	STA. 33+00 TO STA. 38+00	CONTRACT NO. 63503		ILLINOIS FED. AID PROJECT	
PLOT DATE = 10/22/2010	DATE -	REVISED -									