

N-2.16 STA. 38+70, 27.5' LT.  
INLET, TY A, TY 3V F & G  
EOP ELEV. 670.33  
S FL ELEV. 666.40

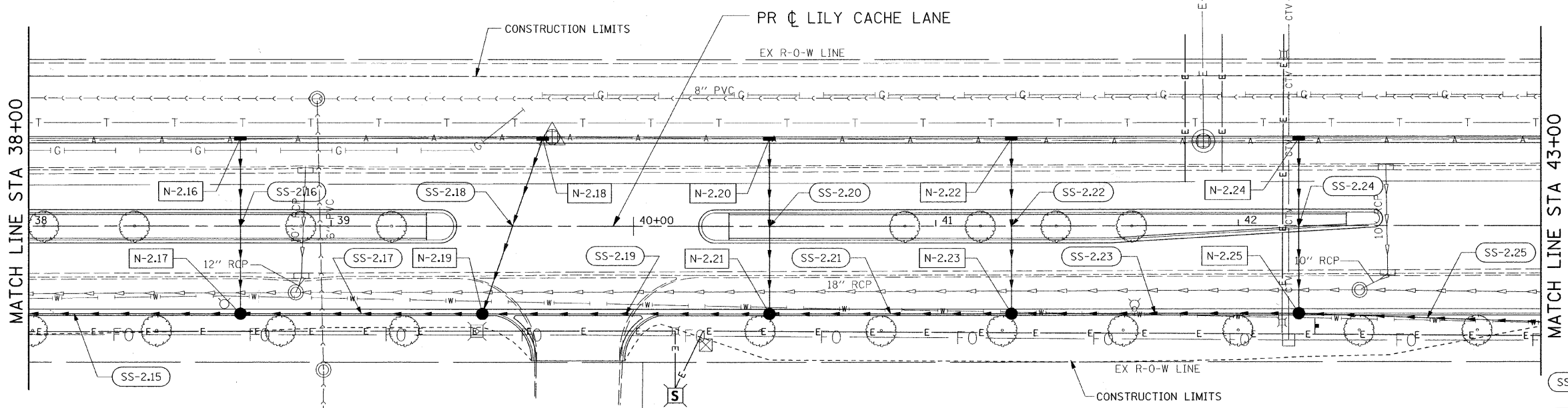
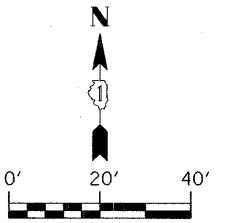
N-2.18 STA. 39+70, 27.5' LT.  
INLET, TY A, TY 3V F & G  
EOP ELEV. 670.79  
S FL ELEV. 667.00

N-2.20 STA. 40+45, 27.5' LT.  
INLET, TY A, TY 3V F & G  
EOP ELEV. 671.07  
S FL ELEV. 667.10

N-2.22 STA. 41+25, 27.5' LT.  
INLET, TY A, TY 3V F & G  
EOP ELEV. 671.48  
S FL ELEV. 667.60

N-2.24 STA. 42+20, 27.5' LT.  
INLET, TY A, TY 3V F & G  
EOP ELEV. 672.01  
S FL ELEV. 668.10

ALL STORM SEWER IS TO BE RUBBER GASKET AND IS PAID FOR AS "STORM SEWERS, RUBBER GASKET, CLASS A" OF THE TYPE AND DIAMETER SPECIFIED IN THE SUMMARY OF QUANTITIES AND SCHEDULE OF QUANTITIES.



SS-2.15 48" RCCP TY 2, CLASS A  
110' @ 0.23%

SS-2.16 12" RCP TY 2, CLASS A  
58' @ 4.31%

SS-2.17 48" RCCP TY 2, CLASS A  
80' @ 0.25%

N-2.17 STA. 38+70, 27.5' RT.  
CATCH BASIN, TY D (6' DIA)  
TY 15 FRAME & LID  
EOP ELEV. 670.33  
N FL ELEV. 663.90  
E FL ELEV. 660.65  
W FL ELEV. 660.55

SS-2.18 12" RCCP TY 2, CLASS A  
61' @ 4.24%

SS-2.19 48" RCCP TY 2, CLASS A  
95' @ 0.26%

SS-2.20 12" RCCP TY 2, CLASS A  
58' @ 3.71%

N-2.19 STA. 39+50, 27.5' RT.  
CATCH BASIN, TY D (6' DIA)  
TY 15 FRAME & LID  
EOP ELEV. 670.73  
N FL ELEV. 664.40  
E FL ELEV. 660.95  
W FL ELEV. 660.85

N-2.21 STA. 40+45, 27.5' RT.  
CATCH BASIN, TY D (6' DIA)  
TY 15 FRAME & LID  
EOP ELEV. 671.07  
N FL ELEV. 664.95  
E FL ELEV. 661.30  
W FL ELEV. 661.20

N-2.23 STA. 41+25, 27.5' RT.  
CATCH BASIN, TY D (6' DIA)  
TY 15 FRAME & LID  
EOP ELEV. 671.48  
N FL ELEV. 665.40  
E FL ELEV. 661.60  
W FL ELEV. 661.50

N-2.25 STA. 42+20, 27.5' RT.  
CATCH BASIN, TY D (6' DIA)  
TY 15 FRAME & LID  
EOP ELEV. 672.01  
N FL ELEV. 665.90  
E FL ELEV. 661.95  
W FL ELEV. 661.85

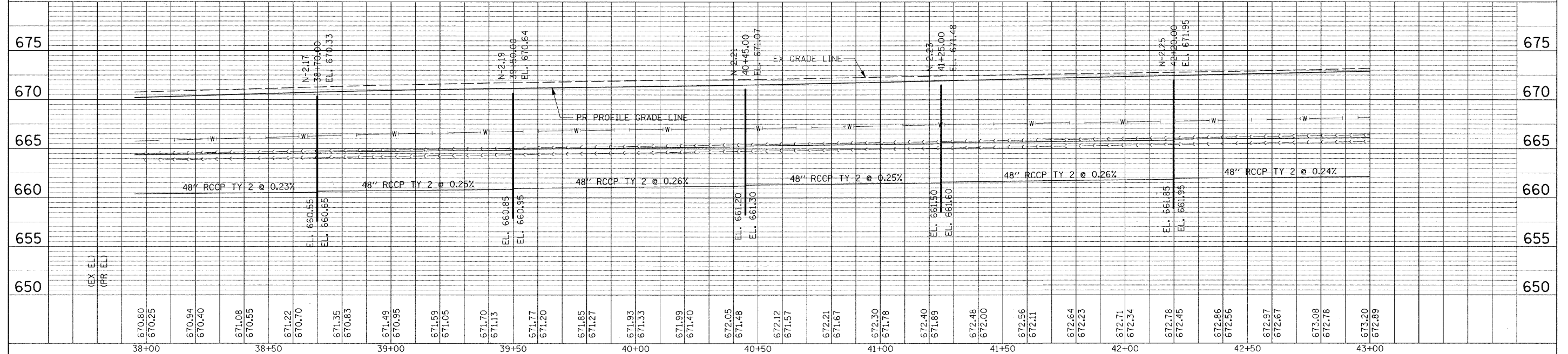
SS-2.21 48" RCCP TY 2, CLASS A  
80' @ 0.25%

SS-2.22 12" RCP TY 2, CLASS A  
58' @ 3.79%

SS-2.23 48" RCCP TY 2, CLASS A  
95' @ 0.26%

SS-2.24 12" RCP TY 2, CLASS A  
58' @ 3.79%

SS-2.25 48" RCCP TY 2, CLASS A  
85' @ 0.24%



FILE NAME = G:\S0\821\CADD_Sheets\90210P04.dgn	USER NAME = JE Consultants	DESIGNED -	REVISD -	<b>STATE OF ILLINOIS DEPARTMENT OF TRANSPORTATION</b>	<b>LILY CACHE LANE DRAINAGE AND UTILITY PLAN</b>			F.A.U. RTE. 1578	SECTION 06-00046-01-PV	COUNTY WILL	TOTAL SHEETS 244	SHEET NO. 147
PLOT SCALE = 28,00000' / IN.	PLOT DATE = 11/16/2010	DRAWN -	REVISD -		SCALE:	SHEET NO. OF SHEETS	STA. 38+00 TO STA. 43+00	CONTRACT NO. 63503				
		CHECKED -	REVISD -		ILLINOIS FED. AID PROJECT							
		DATE -	REVISD -									

PLAN	DATE
NO.	
BY	
DATE	
NO.	
BY	
DATE	
NO.	

PROFILE	DATE
NO.	
BY	
DATE	
NO.	
BY	
DATE	
NO.	