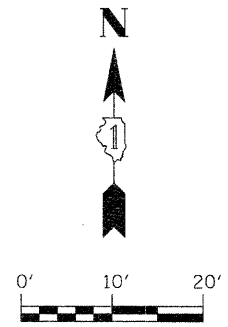
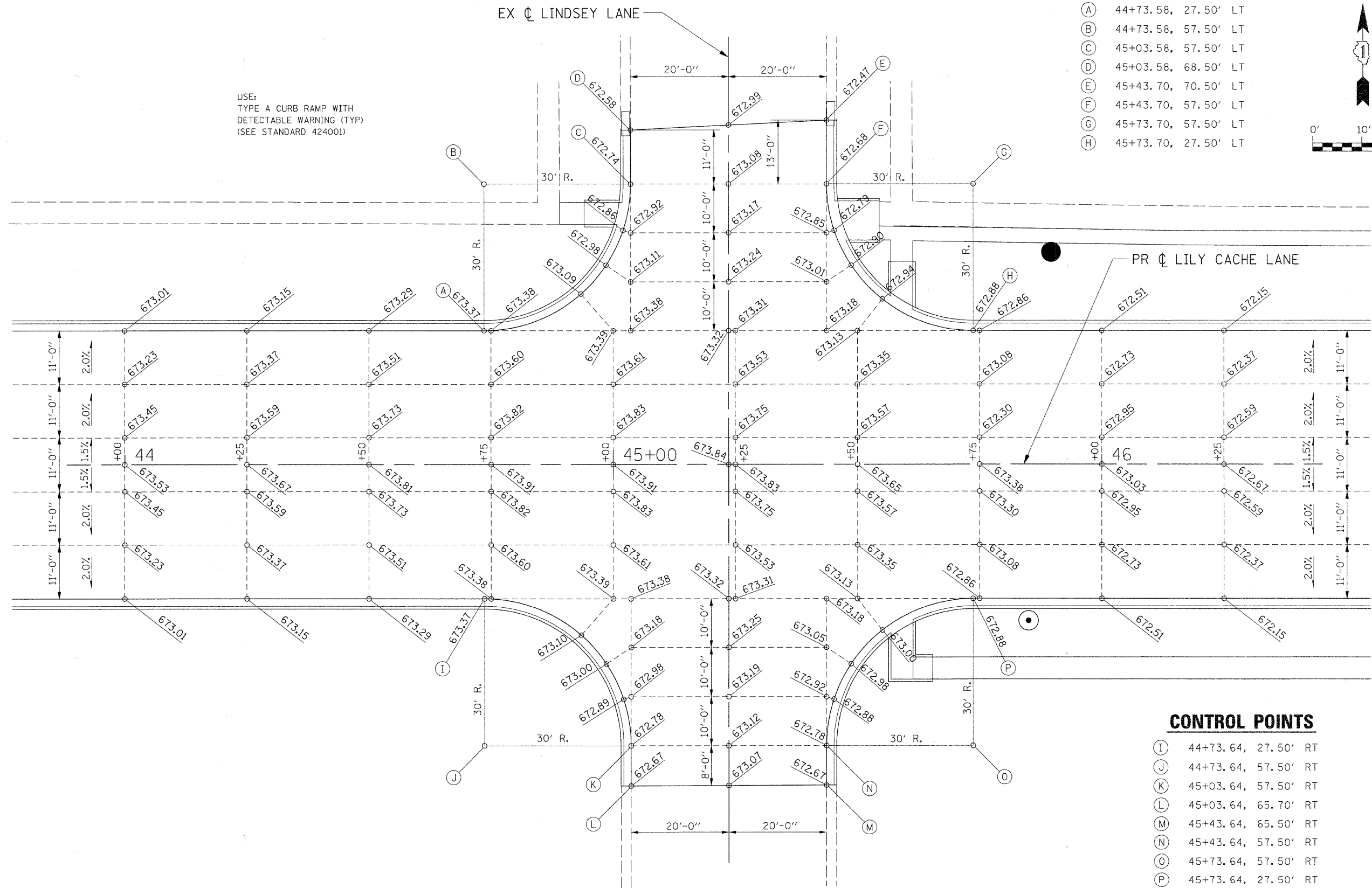


CONTROL POINTS

- (A) 44+73.58, 27.50' LT
- (B) 44+73.58, 57.50' LT
- (C) 45+03.58, 57.50' LT
- (D) 45+03.58, 68.50' LT
- (E) 45+43.70, 70.50' LT
- (F) 45+43.70, 57.50' LT
- (G) 45+73.70, 57.50' LT
- (H) 45+73.70, 27.50' LT



USE:
TYPE A CURB RAMP WITH
DETECTABLE WARNING (TYP)
(SEE STANDARD 424001)



CONTROL POINTS

- (I) 44+73.64, 27.50' RT
- (J) 44+73.64, 57.50' RT
- (K) 45+03.64, 57.50' RT
- (L) 45+03.64, 65.70' RT
- (M) 45+43.64, 65.50' RT
- (N) 45+43.64, 57.50' RT
- (O) 45+73.64, 57.50' RT
- (P) 45+73.64, 27.50' RT

FILE NAME = G:\S09221\CADD_Sheets\9821D02.dgn	USER NAME = IE Consultants	DESIGNED -	REVISED -	STATE OF ILLINOIS DEPARTMENT OF TRANSPORTATION	INTERSECTION DETAIL LINDSEY LANE			F.A.U.	SECTION	COUNTY	TOTAL SHEETS	SHEET NO.
	PLOT SCALE = 10.0000' / IN.	DRAWN -	REVISED -		SCALE:	SHEET NO.	OF SHEETS	STA.	TO STA.	1578	06-00046-01-PV	WILL
PLOT DATE = 10/22/2010	DATE -	REVISOR -	REVISOR -				ILLINOIS FED. AID PROJECT			CONTRACT NO. 63503		