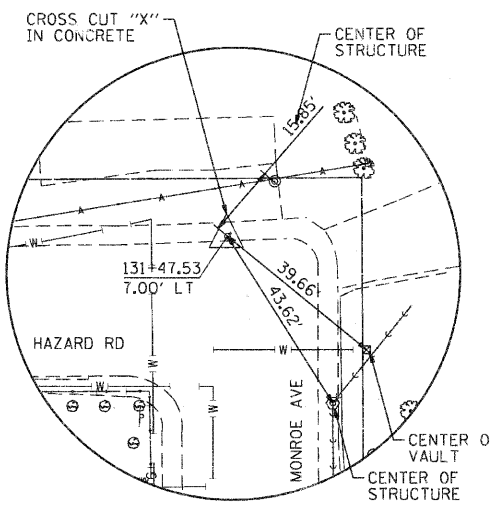
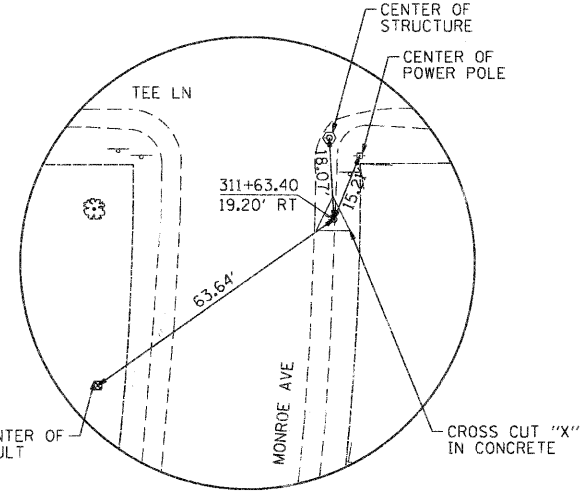


TIE #1 N: 1986619.63
E: 1004798.01



TIE #2 N: 1986178.94
E: 1007499.58

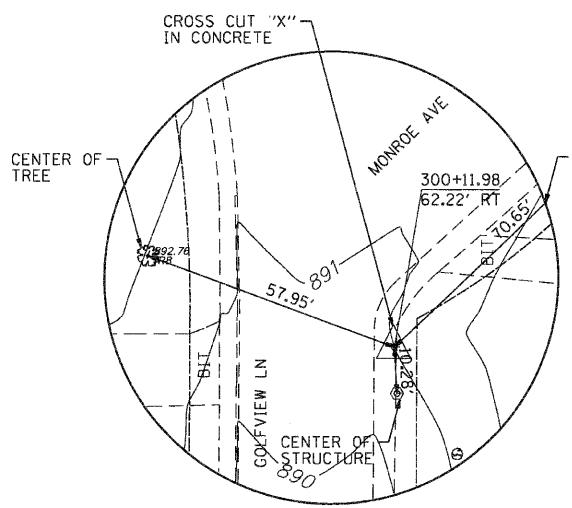


TIE #3 N: 1985352.64
E: 1007528.17

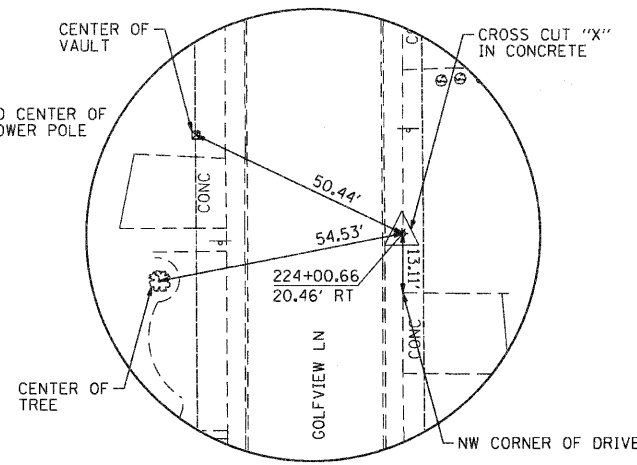
PROP. CURVE PHAZARD-1
 PI STA. = 103+97.82
 $\Delta = 15^\circ 00' 15''$ (LT)
 $D = 14^\circ 19' 26''$
 $R = 400.00'$
 $T = 52.68'$
 $L = 104.75'$
 $e = 3.45'$
 $e = NC$
 PI STA. = 103+97.82
 N: 1,986,646.21
 E: 1,004,861.67
 P.C. STA. = 103+45.14
 N: 1,986,659.73
 E: 1,004,810.76
 P.T. STA. = 104+49.89
 N: 1,986,646.32
 E: 1,004,914.35

PROP. CURVE PHAZARD-2
 PI STA. = 117+08.56
 $\Delta = 25^\circ 39' 23''$ (RT)
 $D = 10^\circ 06' 18''$
 $R = 567.00'$
 $T = 129.11'$
 $L = 253.90'$
 $e = 14.51'$
 $e = NC$
 PI STA. = 117+08.56
 N: 1,986,649.00
 E: 1,006,173.01
 P.C. STA. = 115+79.45
 N: 1,986,648.72
 E: 1,006,043.90
 P.T. STA. = 118+33.34
 N: 1,986,593.34
 E: 1,006,289.51

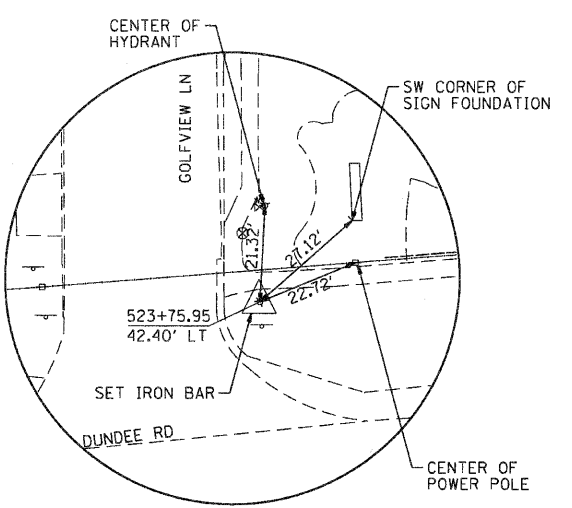
PROP. CURVE PHAZARD-3
 PI STA. = 129+11.56
 $\Delta = 35^\circ 52' 13''$ (LT)
 $D = 19^\circ 05' 55''$
 $R = 300.00'$
 $T = 97.10'$
 $L = 187.82'$
 $e = 15.32'$
 $e = NC$
 PI STA. = 129+11.56
 N: 1,986,128.57
 E: 1,007,262.42
 P.C. STA. = 128+14.46
 N: 1,986,170.43
 E: 1,007,174.80
 P.T. STA. = 130+02.28
 N: 1,986,145.99
 E: 1,007,357.94



TIE #4 N: 1984201.18
E: 1007208.39



TIE #5 N: 1983367.80
E: 1007134.37



TIE #6 N: 1981011.49
E: 1007155.93

BENCHMARKS
 RAILROAD SPIKE IN THE NORTHEAST FACE OF WOOD POWER POLE LOCATED AT THE NORTHEAST CORNER OF ROUTE 68 AND GOLFVIEW AVE. ELEVATION=869.32
 RAILROAD SPIKE IN THE NORTH FACE OF THE SECOND WOOD POWER POLE EAST OF THE EAST ENTRANCE TO THE SHELL GAS STATION ON THE SOUTH SIDE OF HAZARD ROAD. ELEVATION=894.72
 ARROW BOLT ON TOP FLANGE OF FIRE HYDRANT LOCATED AT THE NORTHWEST CORNER OF HAZARD AND SPARROW ROAD. ELEVATION=917.19
 ARROW BOLT ON TOP FLANGE OF FIRE HYDRANT LOCATED ON EAST SIDE OF GOLFVIEW AVE. AND IN FRONT OF GOLFVIEW ELEMENTARY SCHOOL. ELEVATION=868.10

COMPANY NAME: SEC GROUP, INC.
 PROJECT CONTACT: VILLAGE OF CARPENTERSVILLE
 CLIENT: VILLAGE OF CARPENTERSVILLE
 DATE PLOTTED: 11/1/2010 5:53:50 PM
 FILE NAME: 060326-11e-02.dgn
 PLOT DRIVER: pdfplot
 PEN TABLE: standard-trans.tbl



| | | |
|------------------------|-----------------------|-----------|
| USER NAME = CHartke | DESIGNED - C. HARTKE | REVISED - |
| PLOT SCALE = 1" = 100' | DRAWN - R. BEST | REVISED - |
| PLOT DATE = 11/1/2010 | CHECKED - T. HAMILTON | REVISED - |
| | DATE - 10/25/10 | REVISED - |

VILLAGE OF CARPENTERSVILLE

ALIGNMENT, TIE AND BENCHMARKS

SCALE: 1" = 100' SHEET NO. 2 OF 2 SHEETS STA. 319+00 TO STA. END

| F.A. RTE. | SECTION | COUNTY | TOTAL SHEETS | SHEET NO. |
|---------------------|-----------------------------|--------------|--------------|-----------|
| • | 06-00074-00-FP | KANE | 211 | 14 |
| • | FAU 2414, FAU 1280, FAP 343 | CONTRACT NO. | 63504 | |
| FED. ROAD DIST. NO. | ILLINOIS FED. AID PROJECT | | | |