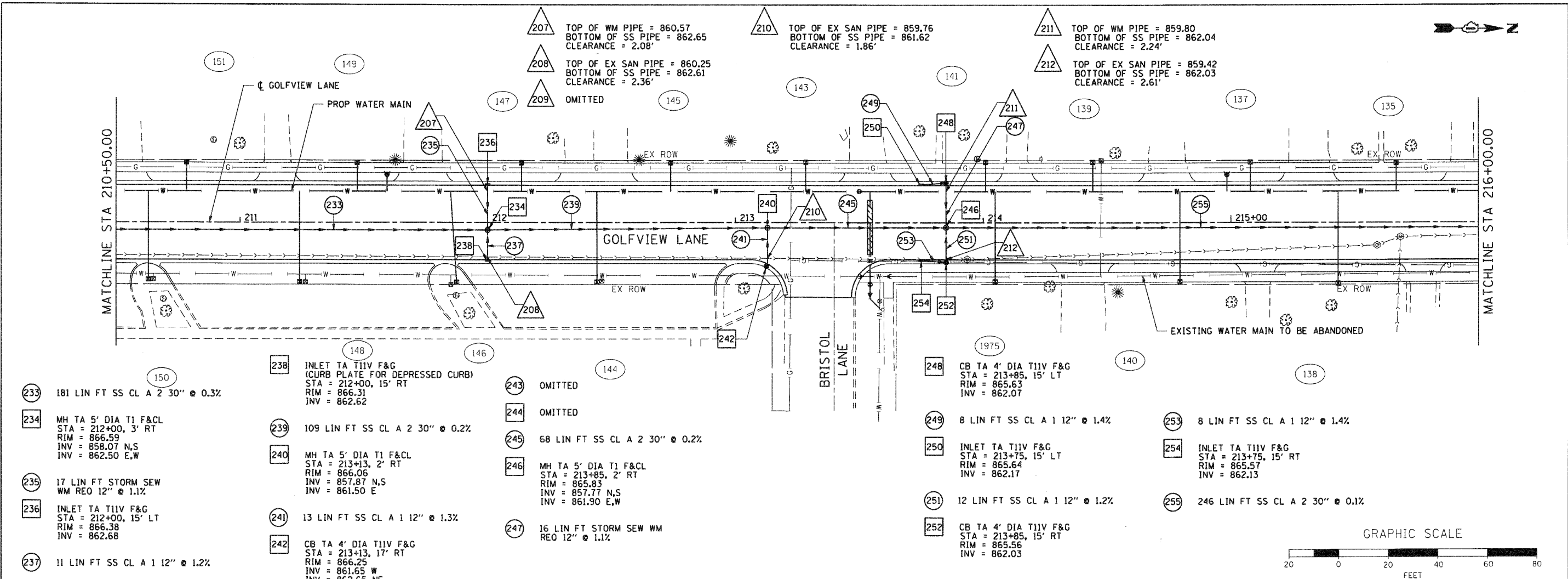


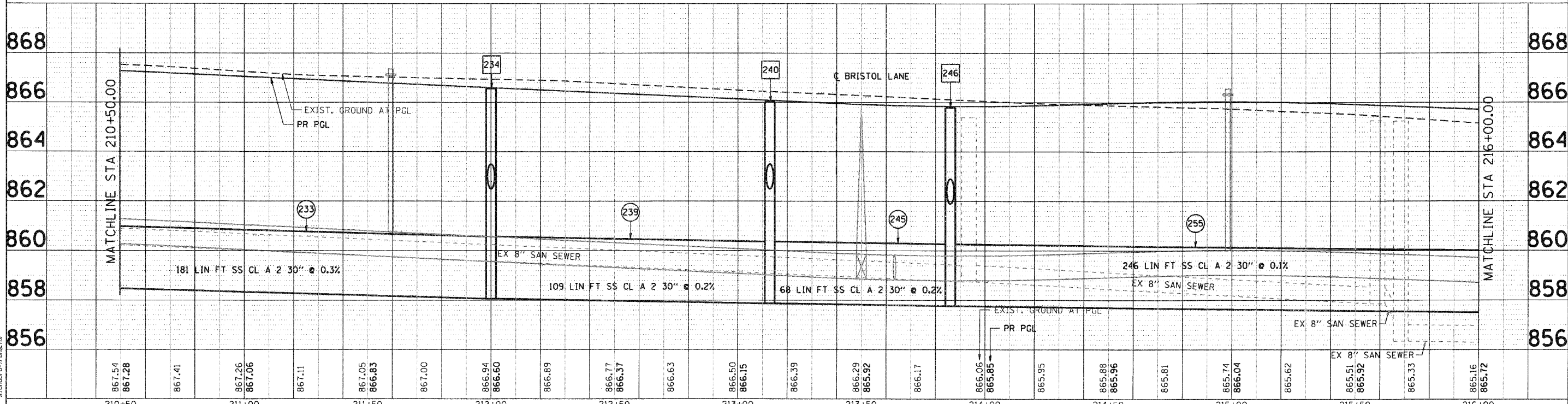
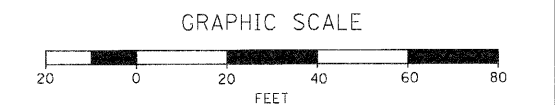
DATE	
BY	
REVISIONS	
NO.	
DATE	
BY	
REVISIONS	
NO.	
DATE	
BY	
REVISIONS	
NO.	
DATE	
BY	
REVISIONS	
NO.	

DATE	
BY	
REVISIONS	
NO.	
DATE	
BY	
REVISIONS	
NO.	
DATE	
BY	
REVISIONS	
NO.	

COMPANY NAME: SEC GROUP, INC.
 PROJECT CONTACT: A. JAIN
 CLIENT: VILLAGE OF CARPENTERSVILLE
 FILE NAME: 06-00074-00-FP
 FILE NUMBER: 06-00074-00-FP
 PLOT ORIGIN: standard-trans.tbl



- 233 181 LIN FT SS CL A 2 30" @ 0.3%
- 234 MH TA 5' DIA T1 F&CL
STA = 212+00, 3' RT
RIM = 866.59
INV = 858.07 N,S
INV = 862.50 E,W
- 235 17 LIN FT STORM SEW
WM REQ 12" @ 1.1%
- 236 INLET TA T11V F&G
STA = 212+00, 15' LT
RIM = 866.38
INV = 862.68
- 237 11 LIN FT SS CL A 1 12" @ 1.2%
- 238 INLET TA T11V F&G
(CURB PLATE FOR DEPRESSED CURB)
STA = 212+00, 15' RT
RIM = 866.31
INV = 862.62
- 239 109 LIN FT SS CL A 2 30" @ 0.2%
- 240 MH TA 5' DIA T1 F&CL
STA = 213+13, 2' RT
RIM = 866.06
INV = 857.87 N,S
INV = 861.50 E
- 241 13 LIN FT SS CL A 1 12" @ 1.3%
- 242 CB TA 4' DIA T11V F&G
STA = 213+13, 17' RT
RIM = 866.25
INV = 861.65 W
INV = 862.65 NE
- 243 OMITTED
- 244 OMITTED
- 245 68 LIN FT SS CL A 2 30" @ 0.2%
- 246 MH TA 5' DIA T1 F&CL
STA = 213+85, 2' RT
RIM = 865.83
INV = 857.77 N,S
INV = 861.90 E,W
- 247 16 LIN FT STORM SEW WM
REQ 12" @ 1.1%
- 248 CB TA 4' DIA T11V F&G
STA = 213+85, 15' LT
RIM = 865.63
INV = 862.07
- 249 8 LIN FT SS CL A 1 12" @ 1.4%
- 250 INLET TA T11V F&G
STA = 213+75, 15' LT
RIM = 865.64
INV = 862.17
- 251 12 LIN FT SS CL A 1 12" @ 1.2%
- 252 CB TA 4' DIA T11V F&G
STA = 213+85, 15' RT
RIM = 865.56
INV = 862.03
- 253 8 LIN FT SS CL A 1 12" @ 1.4%
- 254 INLET TA T11V F&G
STA = 213+75, 15' RT
RIM = 865.57
INV = 862.13
- 255 246 LIN FT SS CL A 2 30" @ 0.1%



867.54	867.28	867.41	867.26	867.06	867.11	867.05	866.83	867.00	866.94	866.60	866.89	866.77	866.37	866.63	866.50	866.15	866.39	866.29	865.92	866.17	866.06	865.85	865.95	865.88	865.96	865.81	865.74	866.04	865.62	865.51	865.92	865.33	865.16	865.72	
210+50	211+00	211+50	212+00	212+50	213+00	213+50	214+00	214+50	215+00	215+50	216+00	EX 8" SAN SEWER		EX 8" SAN SEWER		EX 8" SAN SEWER		EX 8" SAN SEWER		EX 8" SAN SEWER		EX 8" SAN SEWER		EX 8" SAN SEWER		EX 8" SAN SEWER		EX 8" SAN SEWER		EX 8" SAN SEWER		EX 8" SAN SEWER		EX 8" SAN SEWER	

<p>SEC Group, Inc. An IVE Group Company 425 N. Front Street Moline, IL 61704-2138 P: 309.335.1774 F: 309.335.1781 www.secgroupinc.com ©2009 SEC Group, Inc. All Rights Reserved. Chicago, IL</p>	USER NAME = Chai-uke PLOT SCALE = 1" = 20' PLOT DATE = 11/11/2010	DESIGNED - A. JAIN DRAWN - S. PERNAL CHECKED - T. HAMILTON DATE - 10/25/10	REVISED - REVISED - REVISED - REVISED -	VILLAGE OF CARPENTERSVILLE DRAINAGE AND UTILITY PLAN AND PROFILE GOLFVIEW LANE	SCALE: 1" = 20' SHEET NO. 8 OF 21 SHEETS STA. 210+50 TO STA. 216+00	F.A. RTE. SECTION COUNTY TOTAL SHEETS SHEET NO. 06-00074-00-FP KANE 211 56 *FAU 2414, FAU 1280, FAP 343 CONTRACT NO. 63504 FED. ROAD DIST. NO. ILLINOIS FED. AID PROJECT
--	---	---	--	---	---	---