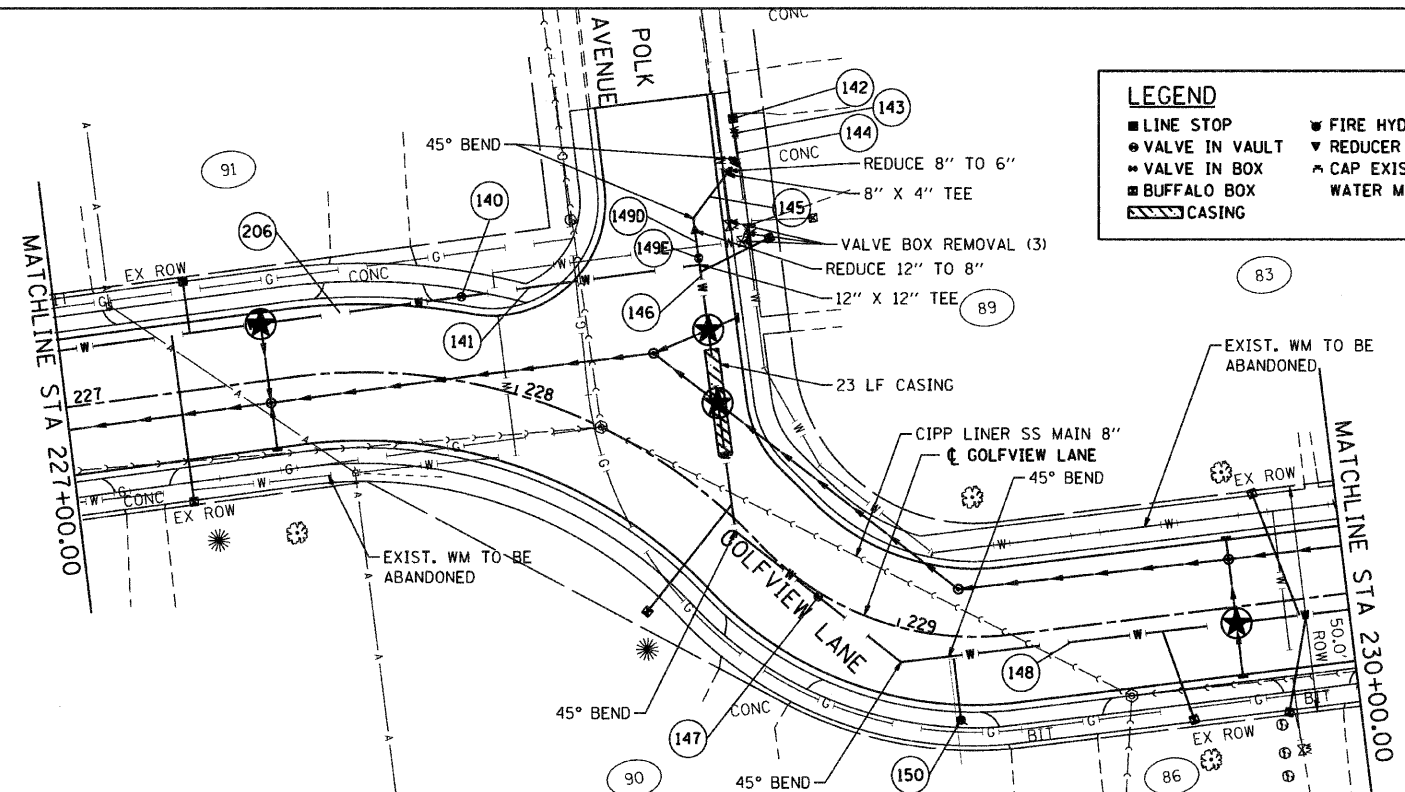
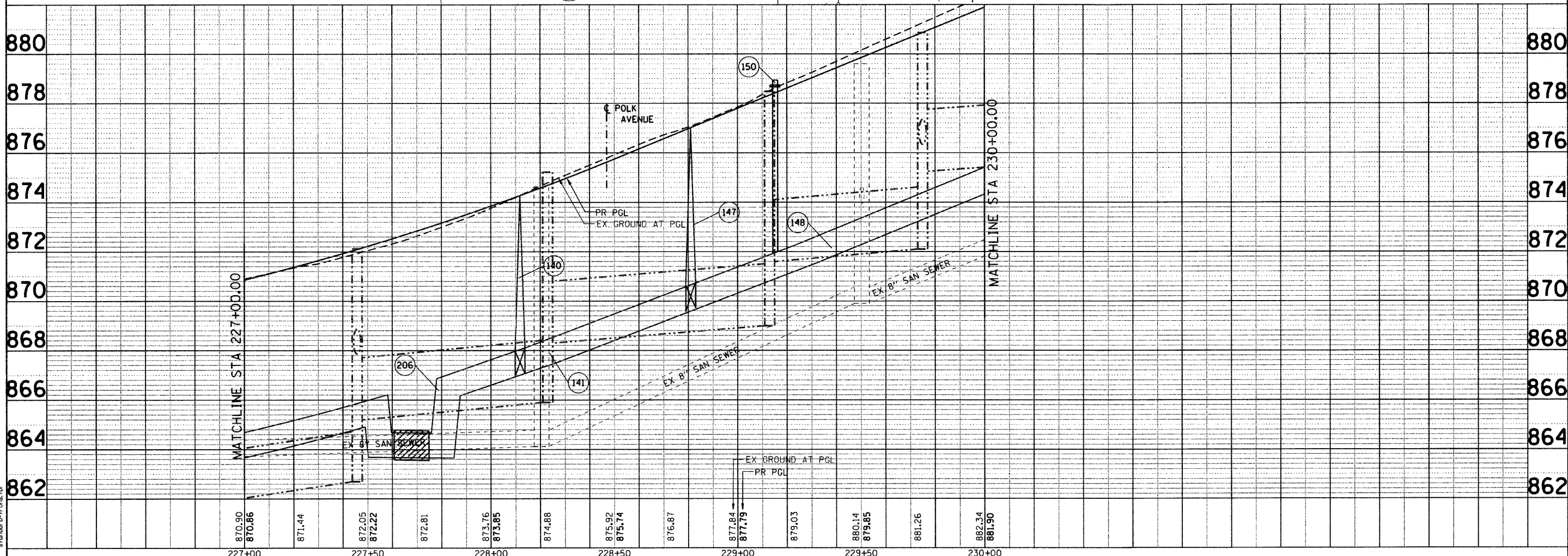


DATE	
BY	
PLAN	
NO.	
DATE	
BY	
PLAN	
NO.	

DATE	
BY	
PROFILE	
NO.	
DATE	
BY	
PROFILE	
NO.	

SEC GROUP, INC.  
 COMPANY NAME  
 PROJECT CONTACT  
 VILLAGE OF CARPENTERSVILLE  
 CLIENT  
 11/5/2010 4:44:53 PM  
 DATE PLOTTED  
 080326-wr-11.dgn  
 FILE NAME  
 pld.plt  
 PLOT DRIVER  
 s:\standard-trans.tbl  
 PER TABLE



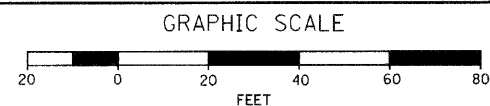
**LEGEND**

- LINE STOP
- VALVE IN VAULT
- VALVE IN BOX
- BUFFALO BOX
- ▨ CASING
- ▼ FIRE HYDRANT
- ▼ REDUCER
- ▲ CAP EXIST.
- WATER MAIN

★ CROSSING:  
 FOR ADDITIONAL INFORMATION,  
 SEE DRAINAGE PLAN AND  
 PROFILE SHEETS.

**WATERMAIN TAGS**

140 12" GATE VALVE IN 60" VALVE VAULT STA. 227+84.98, 18.32 LT BURY ELEV. = 872.80	149D 6 LF WATER MAIN 12"
141 53 LF WATER MAIN 12"	149E 12" GATE VALVE IN 60" VALVE VAULT STA. 228+22.75, 42.92' LT BURY ELEV. = 874.25
142 LINE STOP 6"	150 FIRE HYDRANT W/ AUXILIARY VALVE STA. 229+14.90, 18.36 RT RIM ELEV. = 878.05
143 GATE VALVE IN VALVE BOX, 6" STA. 228+19.40, 71.05' LT BURY ELEV. = 873.75	
144 9 LF WATER MAIN 6"	
145 16 LF WATER MAIN 8"	
146 85 LF WATER MAIN 12"	
147 12" GATE VALVE IN 60" VALVE VAULT STA. 228+81, 1.0' RT RIM ELEV. = 877.00	
148 400 LF WATER MAIN 12"	



<p>SEC Group, Inc.          400 N. First Street          Moline, IL 61704-2100          815.395.1778 F 815.395.1751          www.secgroup.com</p>	USER NAME = CHARTKE DESIGNED - C. PIEPER DRAWN - R. BEST CHECKED - T. HAMILTON DATE - 10/25/10	REVISED - REVISED - REVISED - REVISED -	<b>VILLAGE OF CARPENTERSVILLE</b> <b>WATERMAIN AND SANITARY SEWER PLAN AND PROFILE</b> <b>GOLFVIEW LANE</b>	F.A. RTE. SECTION COUNTY TOTAL SHEETS SHEET NO.	06-00074-00-FP KANE 211 80	*FAU 2414, FAU 1280, FAP 343 CONTRACT NO. 63504 FED. ROAD DIST. NO. ILLINOIS FED. AID PROJECT
	PLOT SCALE = 1" = 20' PLOT DATE = 11/5/2010	SCALE: 1" = 20' SHEET NO. 11 OF 20 SHEETS STA. 227+00 TO STA. 230+00	SECTION COUNTY TOTAL SHEETS SHEET NO.	06-00074-00-FP KANE 211 80	*FAU 2414, FAU 1280, FAP 343 CONTRACT NO. 63504 FED. ROAD DIST. NO. ILLINOIS FED. AID PROJECT	