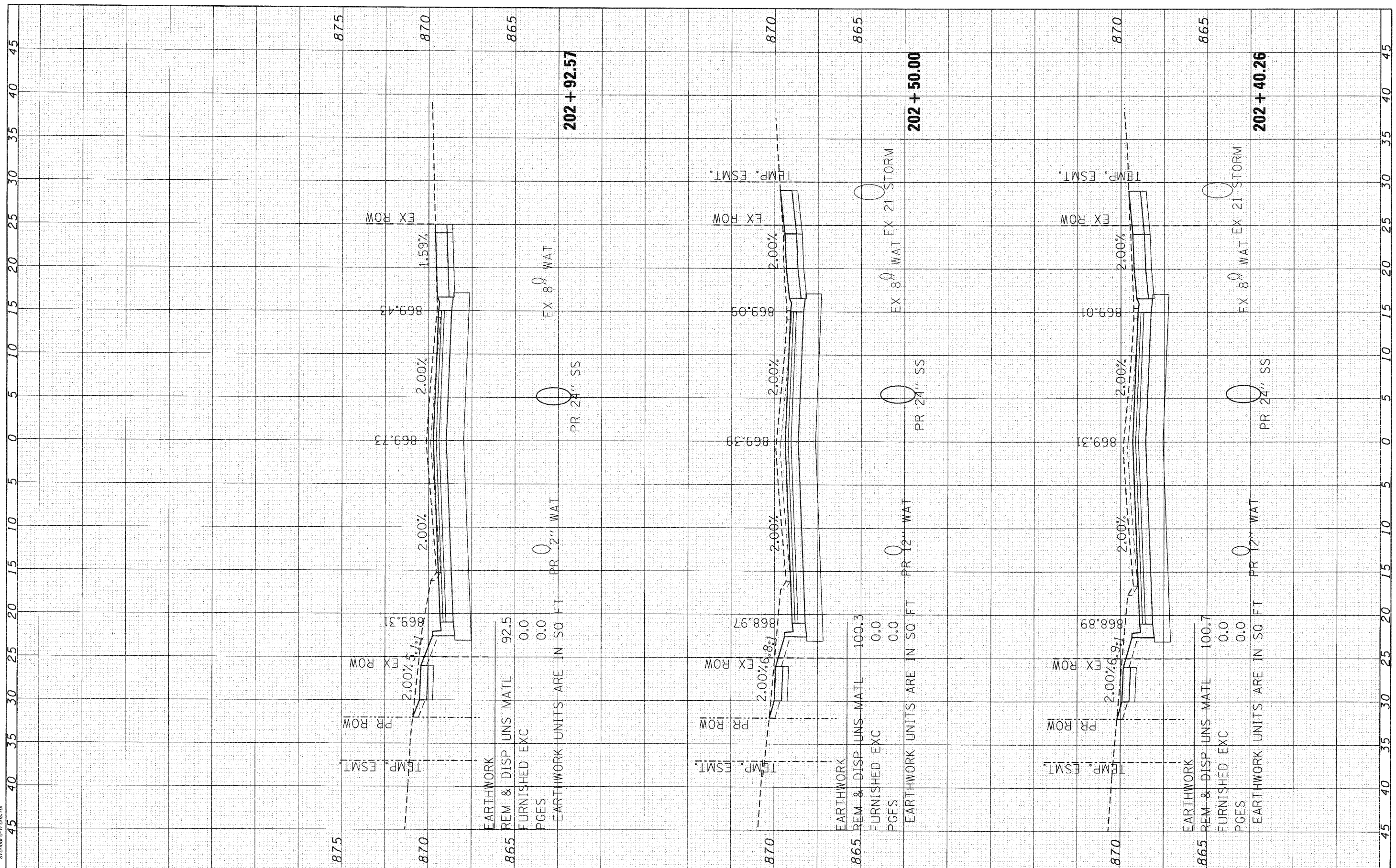


FINAL SURVEY NOTE BOOK NO.	BY	DATE

ORIGINAL SURVEY NOTE BOOK NO.	BY	DATE

COMPANY NAME: SEC GROUP, INC.
 PROJECT CONTACT: A. JAIN
 CLIENT: VILLAGE OF CARPENTERSVILLE
 DATE PLOTTED: 11/22/2010 12:40:55 PM
 PLOT DRIVER: P:\SEC\06074\001\001\001.dgn
 PEN TABLE: Standard-Trans.tbl



<p>SEC Group, Inc. An ITR Green Company 420 N. First Street Maitland, IL 60052-1106 P: 630.381.7700 F: 630.381.7881 www.secgroup.com</p>	USER NAME = CHartke	DESIGNED - C. HARTKE	REVISED -	<p>CROSS SECTIONS GOLFVIEW LANE</p>	F.A. RTE. =	SECTION =	COUNTY =	TOTAL SHEETS =	SHEET NO. =
	PLOT SCALE = 1" = 5'	DRAWN - R. BEST	REVISED -		FAU 2414, FAU 1280, FAP 343	KANE	211	129	
	PLOT DATE = 11/2/2010	CHECKED - T. HAMILTON	REVISED -		STA. 202+40.26 TO STA. 202+92.57	CONTRACT NO. 63504			
	DATE = 10/25/10	REVISED -	REVISED -		FED. ROAD DIST. NO. [ILLINOIS] FED. AID PROJECT 63504				

VILLAGE OF CARPENTERSVILLE

CROSS SECTIONS
GOLFVIEW LANE

SCALE: 1" = 5' SHEET NO. 3 OF 34 SHEETS STA. 202+40.26 TO STA. 202+92.57

F.A. RTE. =	SECTION =	COUNTY =	TOTAL SHEETS =	SHEET NO. =
FAU 2414, FAU 1280, FAP 343	KANE	211	129	
CONTRACT NO. 63504		FED. ROAD DIST. NO. [ILLINOIS] FED. AID PROJECT 63504		