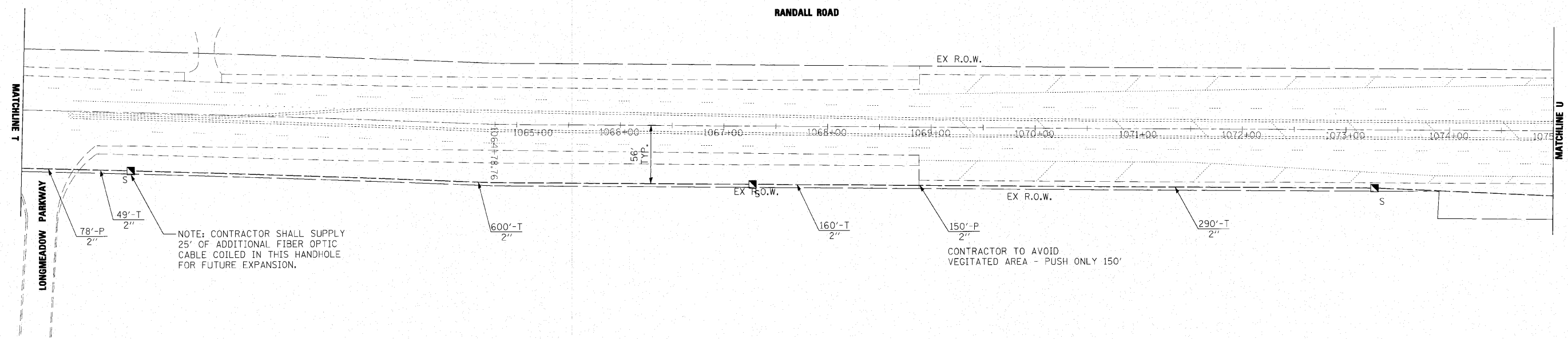
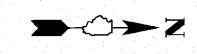
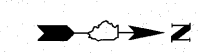
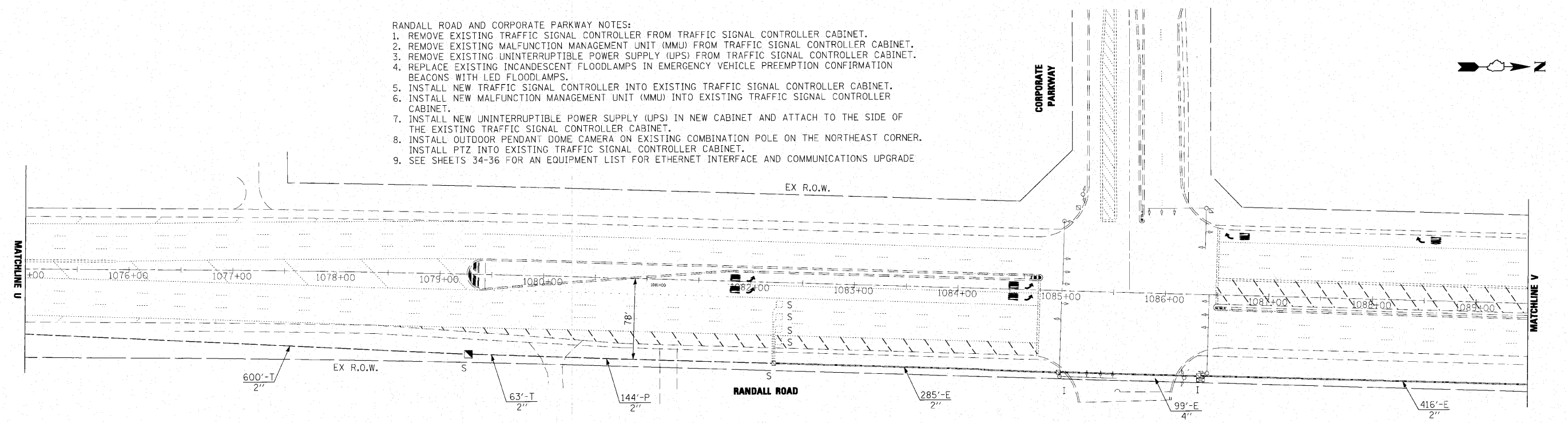


DATE	
BY	
DESIGNED	
DRAWN	
CHECKED	
DATE	
REVISED	
REVISED	
REVISED	
REVISED	

DATE	
BY	
DESIGNED	
DRAWN	
CHECKED	
DATE	
REVISED	
REVISED	
REVISED	
REVISED	



- RANDALL ROAD AND CORPORATE PARKWAY NOTES:**
1. REMOVE EXISTING TRAFFIC SIGNAL CONTROLLER FROM TRAFFIC SIGNAL CONTROLLER CABINET.
  2. REMOVE EXISTING MALFUNCTION MANAGEMENT UNIT (MMU) FROM TRAFFIC SIGNAL CONTROLLER CABINET.
  3. REMOVE EXISTING UNINTERRUPTIBLE POWER SUPPLY (UPS) FROM TRAFFIC SIGNAL CONTROLLER CABINET.
  4. REPLACE EXISTING INCANDESCENT FLOODLAMPS IN EMERGENCY VEHICLE PREEMPTION CONFIRMATION BEACONS WITH LED FLOODLAMPS.
  5. INSTALL NEW TRAFFIC SIGNAL CONTROLLER INTO EXISTING TRAFFIC SIGNAL CONTROLLER CABINET.
  6. INSTALL NEW MALFUNCTION MANAGEMENT UNIT (MMU) INTO EXISTING TRAFFIC SIGNAL CONTROLLER CABINET.
  7. INSTALL NEW UNINTERRUPTIBLE POWER SUPPLY (UPS) IN NEW CABINET AND ATTACH TO THE SIDE OF THE EXISTING TRAFFIC SIGNAL CONTROLLER CABINET.
  8. INSTALL OUTDOOR PENDANT DOME CAMERA ON EXISTING COMBINATION POLE ON THE NORTHEAST CORNER. INSTALL PTZ INTO EXISTING TRAFFIC SIGNAL CONTROLLER CABINET.
  9. SEE SHEETS 34-36 FOR AN EQUIPMENT LIST FOR ETHERNET INTERFACE AND COMMUNICATIONS UPGRADE



FILE NAME #FILEL#	DESIGNED -	REVISED -	<b>KANE COUNTY DIVISION OF TRANSPORTATION</b>		<b>INTERCONNECT PLANS RANDALL ROAD</b>			F.A. RTE.	SECTION	COUNTY	TOTAL SHEETS	SHEET NO.
	DRAWN -	REVISED -						08-00379-00-TL	KANE	36	22	
	CHECKED -	REVISED -			SCALE: 1" = 50'	SHEET NO. 22 OF 36 SHEETS	STA.	TO STA.		CONTRACT NO. 63520		
	DATE	REVISED -			ILLINOIS FED. AID PROJECT CMM-30031471							