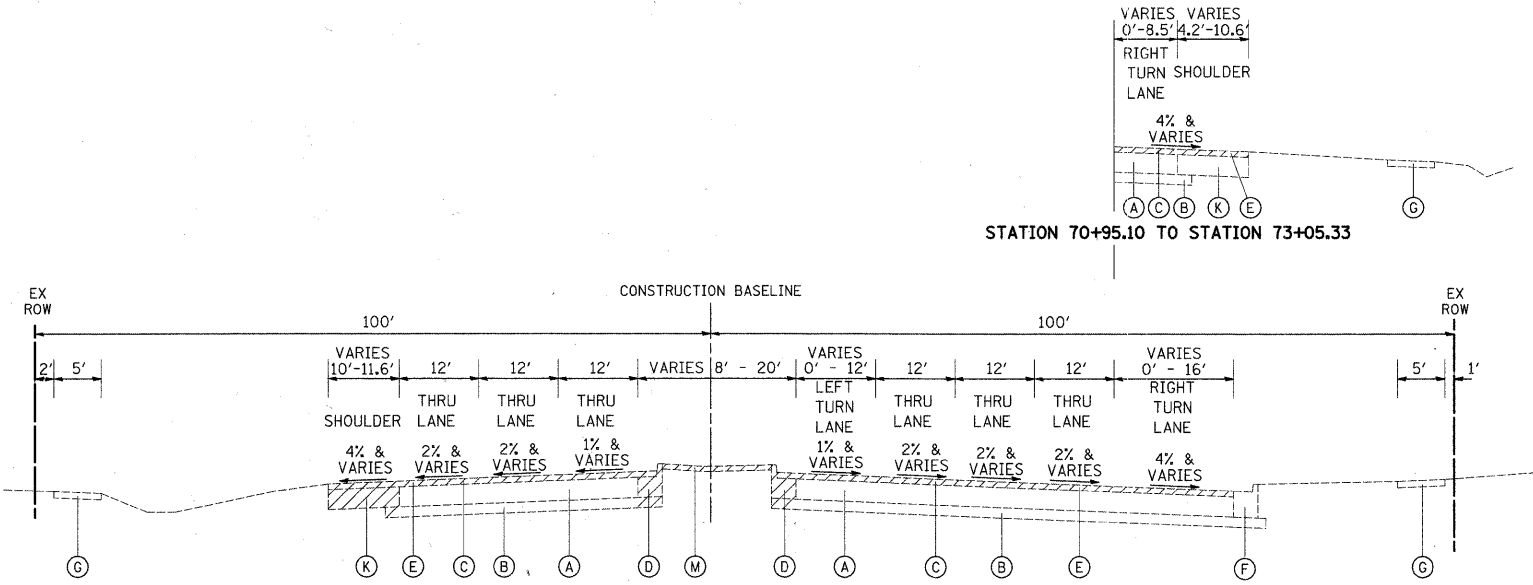


VARIABLES:
 0'-8.5' 4.2'-10.6'
 RIGHT TURN SHOULDER LANE
 4% & VARIES

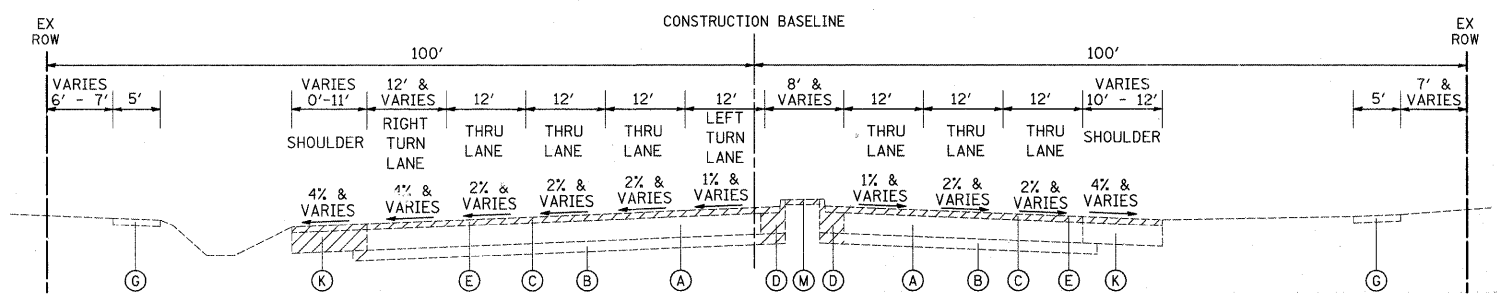
LEGEND

- (A) PORTLAND CEMENT CONCRETE PAVEMENT, 10"
- (B) HOT-MIX ASPHALT BASE COURSE, 4"
- (C) HOT-MIX ASPHALT SURFACE COURSE - VARIES 2 1/2" TO 3 1/2"
- (D) COMBINATION CONCRETE CURB AND GUTTER, TYPE B-9.12 (GUTTER OVERLAID)
- (E) HOT-MIX ASPHALT SURFACE REMOVAL, 2 1/2"
- (F) COMBINATION CONCRETE CURB AND GUTTER, TYPE B-6.24
- (G) PORTLAND CEMENT CONCRETE SIDEWALK
- (H) CONCRETE MEDIAN
- (I) HOT-MIX ASPHALT SURFACE COURSE, 1 1/2"
- (J) COMBINATION CONCRETE CURB AND GUTTER, TYPE B-9.12
- (K) HOT-MIX ASPHALT SHOULDER, 10"
- (L) ASPHALT MEDIAN
- (M) CONCRETE MEDIAN SURFACE, 4"



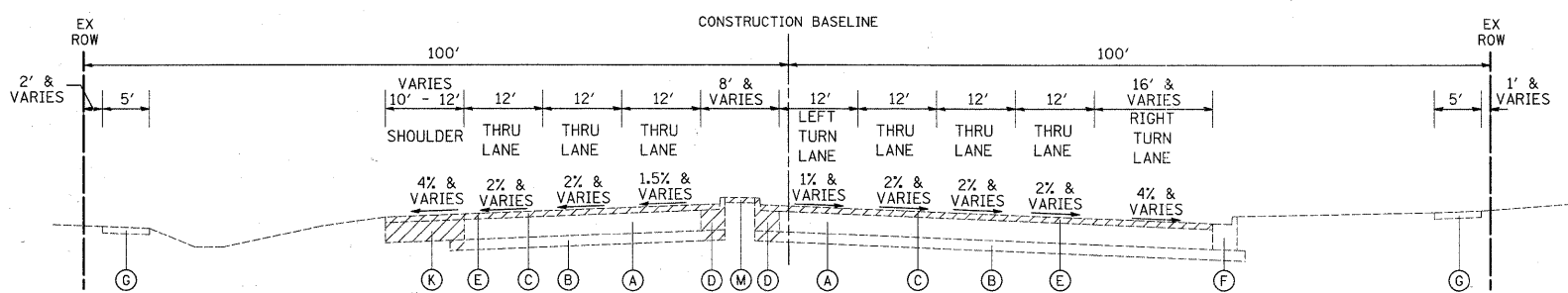
EXISTING TYPICAL SECTION

BUSSE ROAD
 STATION 70+95.10 TO STATION 74+70.53



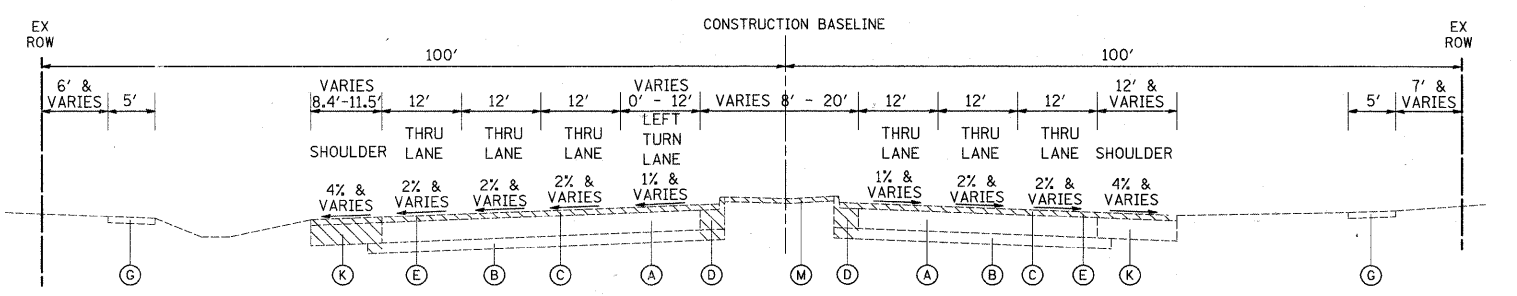
EXISTING TYPICAL SECTION

BUSSE ROAD
 STATION 76+77.38 TO STATION 79+15.53



EXISTING TYPICAL SECTION

BUSSE ROAD
 STATION 74+70.53 TO STATION 76+77.38



EXISTING TYPICAL SECTION

BUSSE ROAD
 STATION 79+15.53 TO STATION 82+50.53

FILE NAME = ...\\oad\sheet\2363.typ.EXIST.dgn	USER NAME = jet	DESIGNED - JAT	REVISED -	STATE OF ILLINOIS DEPARTMENT OF TRANSPORTATION	IL ROUTE 83 (BUSSE ROAD) EXISTING TYPICAL SECTIONS	F.A.P. RTE. 344	SECTION 09-00057-00-CH	COUNTY COOK	TOTAL SHEETS 103	SHEET NO. 11		
PLOT SCALE = 50.0000' / IN.	CHECKED - DJK	REVISED -	SCALE: N.T.S.			SHEET NO. 1 OF 2 SHEETS	CONTRACT NO. 63523					
PLOT DATE = 10/21/2010	DATE - 10-22-10	REVISED -	FED. ROAD DIST. NO. 1 ILLINOIS FED. AID PROJECT M-900316501									