

PRATT BOULEVARD (WEST) ALIGNMENT DATA

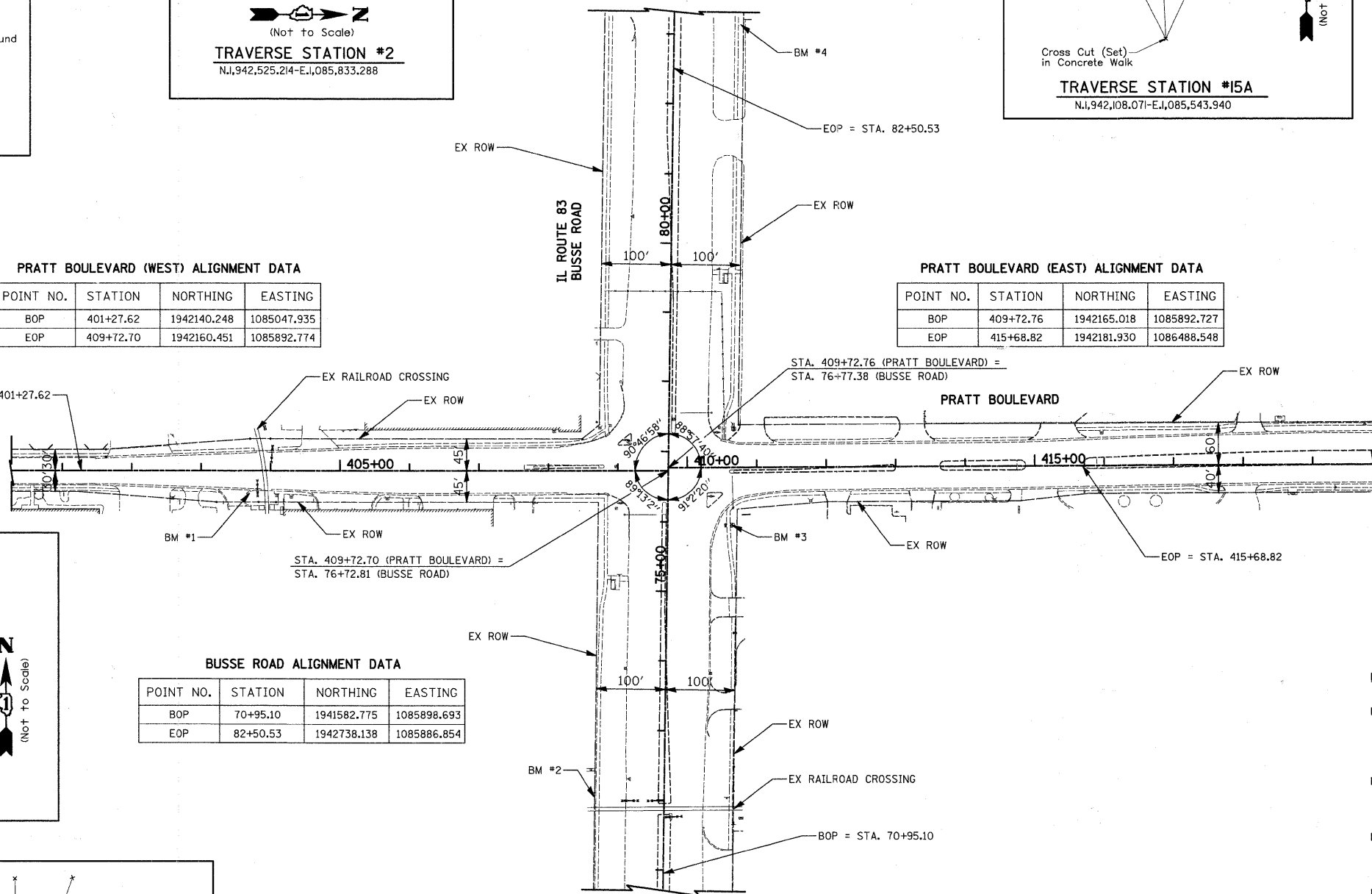
POINT NO.	STATION	NORTHING	EASTING
BOP	401+27.62	1942140.248	1085047.935
EOP	409+72.70	1942160.451	1085892.774

PRATT BOULEVARD (EAST) ALIGNMENT DATA

POINT NO.	STATION	NORTHING	EASTING
BOP	409+72.76	1942165.018	1085892.727
EOP	415+68.82	1942181.930	1086488.548

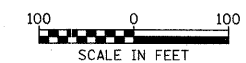
BUSSE ROAD ALIGNMENT DATA

POINT NO.	STATION	NORTHING	EASTING
BOP	70+95.10	1941582.775	1085898.693
EOP	82+50.53	1942738.138	1085886.854



NOTES:
 BOP = BEGINNING OF PROJECT
 EOP = END OF PROJECT
 P.I. = POINT OF INTERSECTION
 P.C. = POINT OF CURVATURE
 P.T. = POINT OF TANGENT
 BM = BENCHMARK

- BENCHMARKS**
- REF BM ELEVATIONS ARE BASED ON G.P.S. RTK OBSERVATIONS MEASURED AT TRAVERSE STATION #2, AS SHOWN HEREON. NGVD '88 ELEV. = 678.54
 - BM #1 CROSS CUT (SET) IN FIRST FIRE HYDRANT WEST OF SPUR TRACK ON SOUTH SIDE OF PRATT BOULEVARD. ELEV. = 676.88
 - BM #2 RAILROAD SPIKE (SET) IN FIRST POWER POLE NORTH OF SPUR TRACK ON WEST SIDE OF ILLINOIS ROUTE 83. ELEV. = 675.71
 - BM #3 BOX CUT (SET) IN THE SOUTHWEST CORNER OF THE CONCRETE BASE OF TRAFFIC SIGNAL CONTROLLER IN THE SOUTHEAST QUADRANT OF THE INTERSECTION OF ILLINOIS ROUTE 83 AND PRATT BOULEVARD. ELEV. = 675.68
 - BM #4 CROSS CUT (SET) ON NORTHEAST FLANGE BOLT OF SECOND FIRE HYDRANT ON NORTH SIDE OF PRATT BOULEVARD ON THE EAST SIDE OF ILLINOIS ROUTE 83. ELEV. = 676.23
 - BM #5 CROSS CUT (SET) ON SOUTHEAST FLANGE BOLT OF THIRD FIRE HYDRANT EAST OF ILLINOIS ROUTE 83 ON THE SOUTH SIDE OF PRATT BOULEVARD. ELEV. = 676.05



FILE NAME = J:\2363\cad\sheet\2363_A&T.dgn

USER NAME = jet
 DESIGNED - BLG
 DRAWN - BLG
 CHECKED - DJK
 DATE - 10/21/2010

REVISED -
 REVISED -
 REVISED -
 REVISED -

**STATE OF ILLINOIS
 DEPARTMENT OF TRANSPORTATION**

**ILLINOIS ROUTE 83 AND PRATT BOULEVARD
 ALIGNMENT, TIES AND BENCHMARKS**

SCALE: 1" = 100' SHEET NO. 1 OF 1 SHEETS STA. TO STA.

F.A.P. RTE.	SECTION	COUNTY	TOTAL SHEETS	SHEET NO.
334	09-00057-00-CH	COOK	103	16
CONTRACT NO. 63523				
<small>FED. ROAD DIST. NO. 1 ILLINOIS FED. AID PROJECT M-9003(660)</small>				