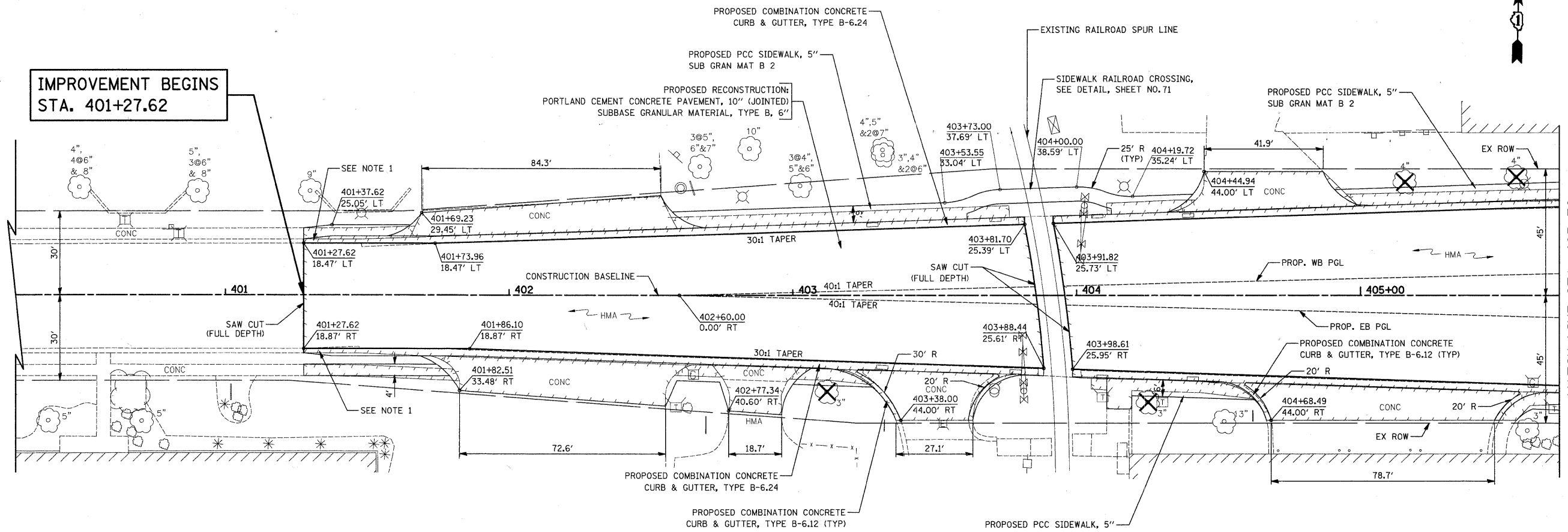
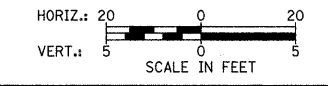


DATE	BY
REVISIONS	NO.
DESIGNED	BLG
DRAWN	BLG
CHECKED	DJK
DATE	10-22-10

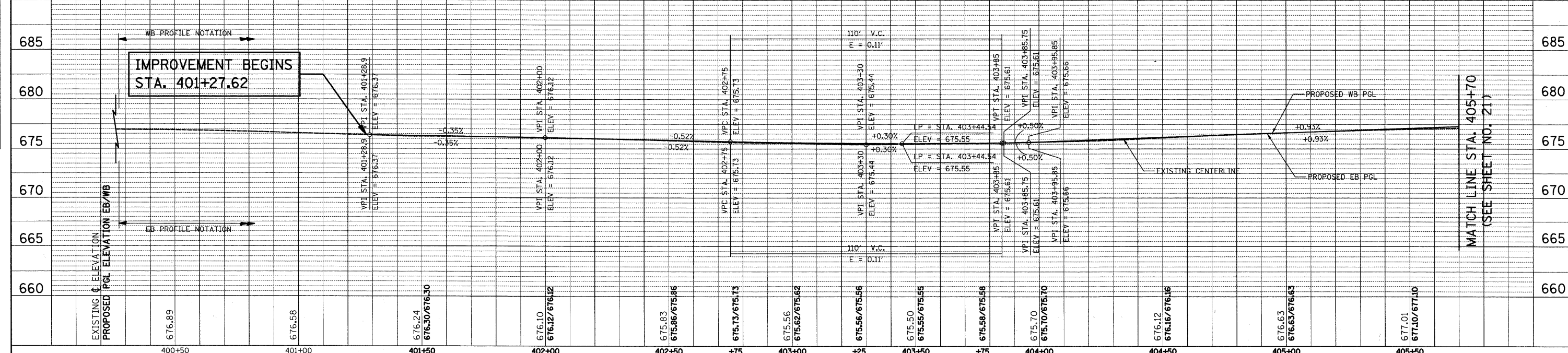
DATE	BY
REVISIONS	NO.
DESIGNED	BLG
DRAWN	BLG
CHECKED	DJK
DATE	10-22-10



- NOTES:
1. TRANSITION CURB FROM B-6.24 TO MATCH EXISTING OVER 10'. PAID FOR AS "COMBINATION CONCRETE CURB & GUTTER, TYPE B-6.24".
 2. ALL DRIVEWAYS SHALL BE REPLACED WITH PCC DRIVEWAY, 8 INCH, SPECIAL.
 3. SEE MAINTENANCE OF TRAFFIC AND WATERMAIN PLANS FOR REPLACEMENT REQUIRED WEST OF RECONSTRUCTION LIMITS.



PRATT BOULEVARD



FILE NAME = ...2363\cad\sheet\2363_PP_04.dgn	USER NAME = k+k	DESIGNED - BLG	REVISIONS -	STATE OF ILLINOIS DEPARTMENT OF TRANSPORTATION IL ROUTE 83 (BUSSE ROAD) AND PRATT BOULEVARD PLAN AND PROFILE SCALE: 1" = 20' SHEET NO. 4 OF 6 SHEETS STA. 401+27.62 TO STA. 405+70.00	F.A.P. RTE. 334	SECTION 09-00057-00-CH	COUNTY COOK	TOTAL SHEETS 103	SHEET NO. 20
PLOT SCALE = 20.0000' / IN.	CHECKED - DJK	REVISIONS -	CONTRACT NO. 63523						
PLOT DATE = 10/22/2010	DATE - 10-22-10	REVISIONS -	FED. ROAD DIST. NO. 1 ILLINOIS FED. AID PROJECT M-9003660						