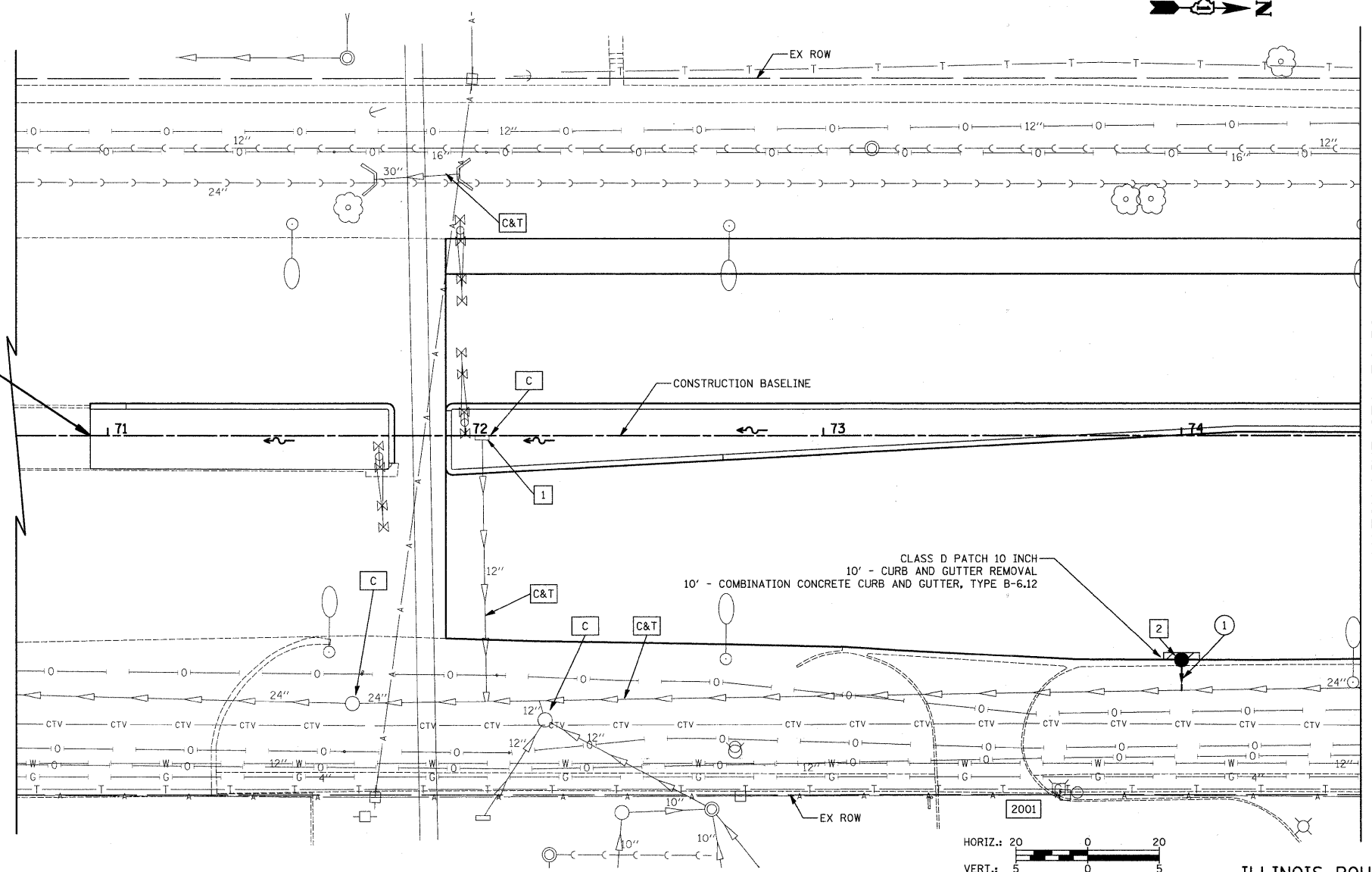


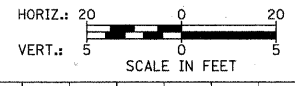
- 1 STA. 72+05, 0.5' RT
INLET TO BE ADJUSTED
W/ NEW TYPE 1 FR., O.L.
EX RIM = 674.91
PR RIM = 675.32
- 2 STA. 74+00, 62.3' RT
CB T-A, 4' DIA
TYPE II F & G
RIM = 674.34
INV = 669.25 (12" E)

- 1 4' - 12" S.S., CL. A, T-2 @ 2.0%
T.B.F. = 0 CU. YD.
(CONNECT TO EXISTING 24" STORM
SEWER - SEE DETAIL)

**IMPROVEMENT BEGINS
STA. 70+95.10**



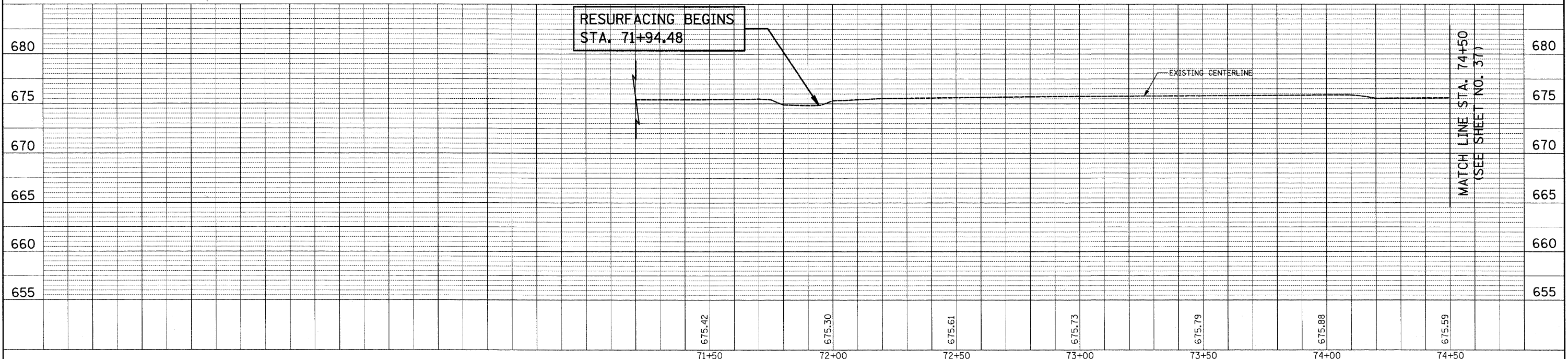
- C&T STORM SEWERS TO BE CLEANED AND TELEVISION INSPECTION OF SEWER
- C DRAINAGE STRUCTURES TO BE CLEANED



ILLINOIS ROUTE 83

MATCH LINE STA. 74+50
(SEE SHEET NO. 37)

**RESURFACING BEGINS
STA. 71+94.48**



MATCH LINE STA. 74+50
(SEE SHEET NO. 37)

PLAN	DESIGNED	DATE
	PLOTTED	
	ALIGNED	
	CHECKED	
	FILED	
	NO.	

PROFILE	DESIGNED	DATE
	PLOTTED	
	GRADES CHECKED	
	S.M. NOTED	
	STRUCTURE NOTATIONS CHECKED	
	NO.	

FILE NAME = ...2363\oad\sheet\2363.DU.01.dgn	USER NAME = krk	DESIGNED - BLG	REVISED -	STATE OF ILLINOIS DEPARTMENT OF TRANSPORTATION	IL ROUTE 83 (BUSSE ROAD) AND PRATT BOULEVARD DRAINAGE AND UTILITIES	F.A.P. RTE. 334	SECTION 09-00057-00-CH	COUNTY COOK	TOTAL SHEETS 103	SHEET NO. 36		
PLOT SCALE = 20,0000' / IN.	CHECKED - DJK	DRAWN - BLG	REVISED -			SCALE: 1" = 20'	SHEET NO. 1 OF 6 SHEETS	STA. 70+95.10 TO STA. 74+50.00	CONTRACT NO. 63523			
PLOT DATE = 11/27/2010	DATE - 10-22-10	CHECKED - DJK	REVISED -			FED. ROAD DIST. NO. 1 ILLINOIS FED. AID PROJECT M-90036601						