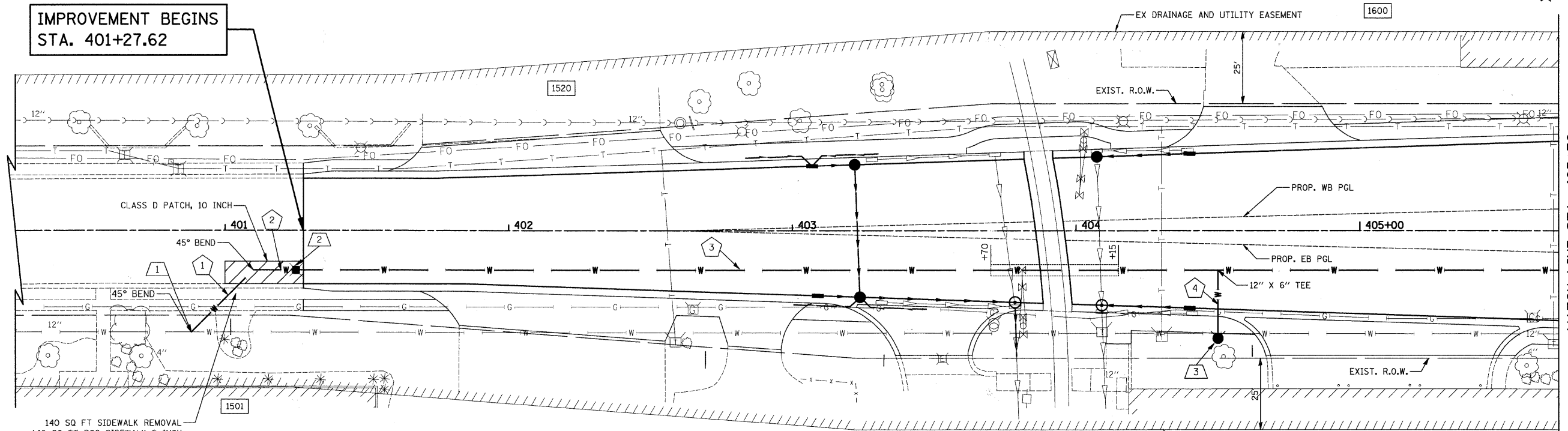


PLAN	REVISIONS	DATE
NOTE BOOK	PLOTTED	
	CHECKED	
	NO. _____	
	ADD. FILE NAME	

PROFILE	REVISIONS	DATE
NOTE BOOK	GRADES CHECKED	
	B.M. NOTED	
	STRUCTURE NOTATIONS CHECKED	
	NO. _____	

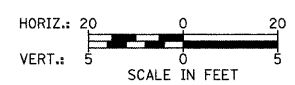
- 1 STA. 400+91, 33' RT CONNECTION TO EXISTING WATERMAIN 12"
- 2 STA. 401+25, 14.0' RT GATE VALVE 12" WITH VAULT, 5'-DIAMETER RIM = 676.14
- 3 STA. 404+50, 38.0' RT FH W/ AUX VALVE & VALVE BOX



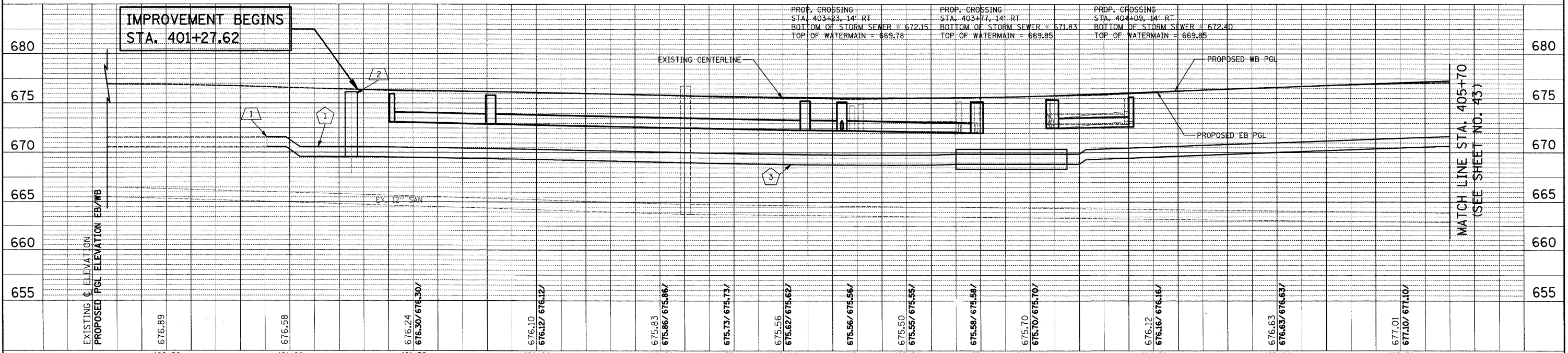
140 SQ FT SIDEWALK REMOVAL
 140 SQ FT PCC SIDEWALK 5 INCH
 16 SQ YD SUBBASE GRANULAR MATERIAL, TYPE B, 2"
 20 FT COMBINATION CONCRETE CURB AND GUTTER, TYPE B-6,12
 20 FT COMBINATION CURB AND GUTTER REMOVAL
 6 SQ YD SUBBASE GRANULAR MATERIAL, TYPE B, 6"

- 1 31' - WATER MAIN 12"
T.B.F. = 15.8 CU. YD.
- 2 15' - WATER MAIN 12"
T.B.F. = 10.3 CU. YD.
- 3 45' - STEEL CASINGS 24"
45' - DUCTILE IRON PIPE INSTALLED IN STEEL CASING, 12"
637' - WATER MAIN 12"
T.B.F. = 471.9 CU. YD.
- 4 24' - WATER MAIN 6"
T.B.F. = 13.9 CU. YD.

NOTES:
 1) THE CONTRACTOR SHALL FIELD VERIFY THE SIZES OF EXISTING WATERMAIN AND SERVICES PRIOR TO ORDERING NEW MATERIAL.
 2) REMOVAL OF EXISTING WATERMAIN THAT IS IN CONFLICT WITH THE PROPOSED IMPROVEMENTS SHALL BE INCLUDED IN THE COST OF "ABANDON EXISTING WATERMAIN". REMOVAL OF EXISTING WATER VALVE BOXES AND VAULTS SHALL BE INCLUDED IN THE COST OF "ABANDON EXISTING WATERMAIN" UNLESS SPECIFICALLY CALLED-OUT IN THE PLANS.
 3) SPECIFIC LOCATIONS FOR THE CUTTING AND CAPPING OF THE EXISTING WATERMAIN ARE SHOWN FOR THE REQUIRED CONNECTIONS AT THE INTERSECTION OF BUSSE ROAD AND PRATT BOULEVARD. ADDITIONAL CUTTING AND CAPPING WILL BE REQUIRED AT OTHER LOCATIONS ALONG THE EXISTING WATERMAIN TO BE ABANDONED THAT ARE NOT SHOWN, BUT WILL BE DIRECTED BY THE ENGINEER. THE COST OF THIS WORK SHALL BE INCLUDED IN THE PAY ITEM "WATERMAIN TO BE ABANDONED".



PRATT BOULEVARD



FILE NAME = ...\\2363\oad\sheet\2363.WM.01.dgn	USER NAME = krk	DESIGNED - BLG	REVISIONS -	STATE OF ILLINOIS DEPARTMENT OF TRANSPORTATION IL ROUTE 83 (BUSSE ROAD) AND PRATT BOULEVARD WATERMAIN PLANS SCALE: 1" = 20' SHEET NO. 1 OF 3 SHEETS STA. 401+27.62 TO STA. 405+70.00	F.A.P. RTE. 334	SECTION 09-00057-00-CH	COUNTY COOK	TOTAL SHEETS 103	SHEET NO. 42
PLOT SCALE = 20.0000' / IN.	CHECKED - DJK	DATE - 10-22-10	REVISIONS -		CONTRACT NO. 63523				
PLOT DATE = 11/3/2010	DATE - 10-22-10	REVISIONS -	FED. ROAD DIST. NO. 1 ILLINOIS FED. AID PROJECT M-9003(660)						