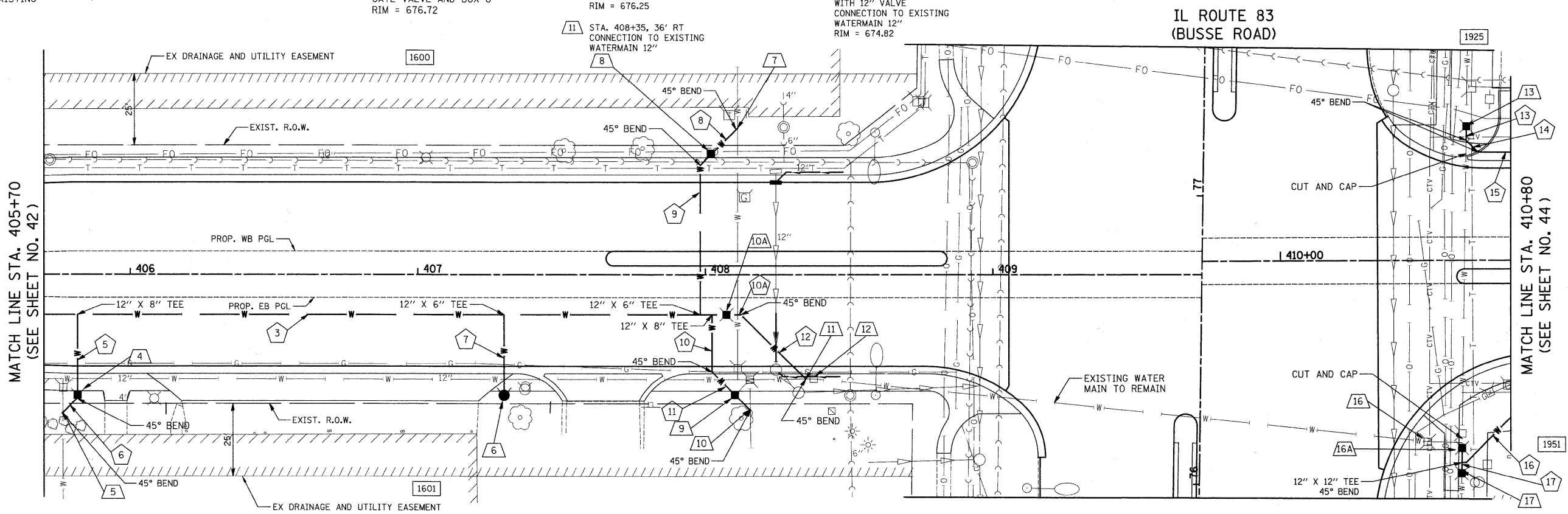
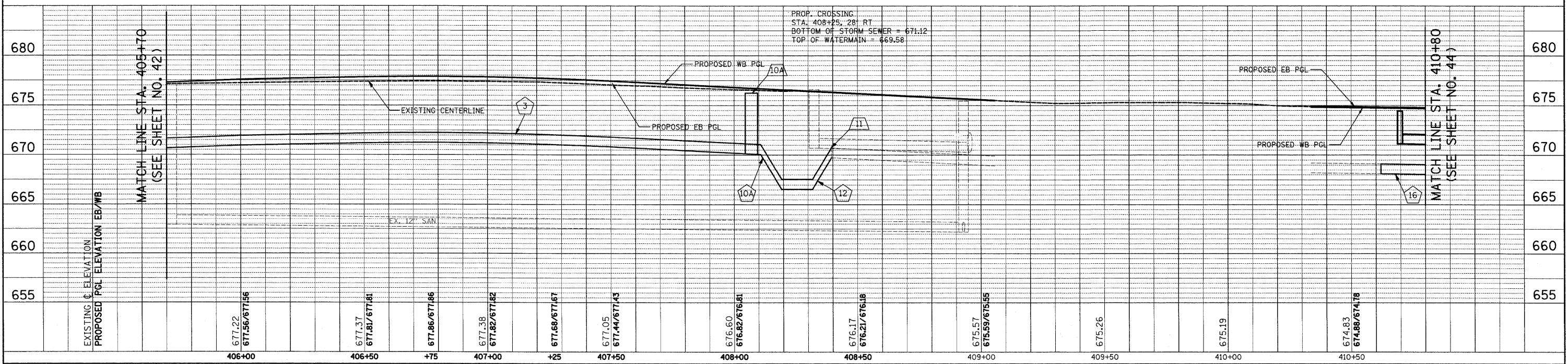
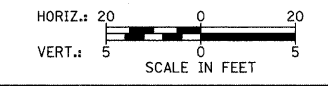


- 4 STA. 405+82, 42.0' RT GATE VALVE AND BOX 8" RIM = 677.41
- 5 STA. 405+77, 48' RT CONNECTION TO EXISTING WATERMAIN 8"
- 6 STA. 407+30, 42.0' RT FH W/ AUX VALVE & VALVE BOX
- 7 STA. 408+11, 51' LT CONNECTION TO EXISTING WATERMAIN 6"
- 8 STA. 408+02, 44.5' LT GATE VALVE AND BOX 6" RIM = 676.80
- 9 STA. 408+10, 39.5' RT GATE VALVE AND BOX 8" RIM = 676.72
- 10 STA. 408+16, 47' RT CONNECTION TO EXISTING WATERMAIN 8"
- 10A STA. 408+07, 14.0' RT GATE VALVE 12" WITH VAULT, 5'-DIAMETER RIM = 676.25
- 11 STA. 408+35, 36' RT CONNECTION TO EXISTING WATERMAIN 12"
- 12 STA. 408+38, 36' RT VALVE BOX TO BE ADJUSTED EX RIM = 676.22 PR RIM = 676.30
- 13 STA. 410+65, 47' LT VALVE VAULT, 5'-DIA., WITH 12" VALVE CONNECTION TO EXISTING WATERMAIN 12" RIM = 674.82
- 14 NOT USED
- 15 NOT USED
- 16 STA. 410+51, 63' RT VALVE VAULT TO BE REMOVED (VALVE TO REMAIN IN OPEN POSITION)
- 16A STA. 410+62, 59' RT VALVE VAULT, 5'-DIA., WITH 12" VALVE CONNECTION TO EXISTING WATERMAIN 12" RIM = 674.90
- 17 STA. 410+63, 74' RT VALVE VAULT, 5'-DIA., WITH 12" VALVE CONNECTION TO EXISTING WATERMAIN 12" RIM = 675.00



- 3 SEE SHEET NO. 42
- 5 29' - WATER MAIN 8" T.B.F. = 17.9 CU. YD.
- 6 7' - WATER MAIN 8" T.B.F. = 0.0 CU. YD.
- 7 28' - WATER MAIN 6" T.B.F. = 16.2 CU. YD.
- 8 18' - WATER MAIN 6" T.B.F. = 0.0 CU. YD.
- 9 52' - WATER MAIN 6" T.B.F. = 35.6 CU. YD.
- 10 20' - WATER MAIN 8" T.B.F. = 15.7 CU. YD.
- 10A 5' - WATER MAIN 12" T.B.F. = 3.5 CU. YD.
- 11 19' - WATER MAIN 8" T.B.F. = CU. YD.
- 12 32' - WATER MAIN 12" T.B.F. = 28.2 CU. YD.
- 13 5' - WATER MAIN 12" T.B.F. = 1.4 CU. YD.
- 14 6' - WATER MAIN 12" T.B.F. = 4.1 CU. YD.
- 15 39' - WATER MAIN 12" T.B.F. = 26.8 CU. YD.
- 16 26' - WATER MAIN 12" T.B.F. = 0.0 CU. YD.
- 17 8' - WATER MAIN 12" T.B.F. = 5.5 CU. YD.



DATE	
BY	
REVISIONS	
NO.	
DATE	
BY	
REVISIONS	
NO.	
DATE	
BY	
REVISIONS	
NO.	

DATE	
BY	
REVISIONS	
NO.	
DATE	
BY	
REVISIONS	
NO.	
DATE	
BY	
REVISIONS	
NO.	