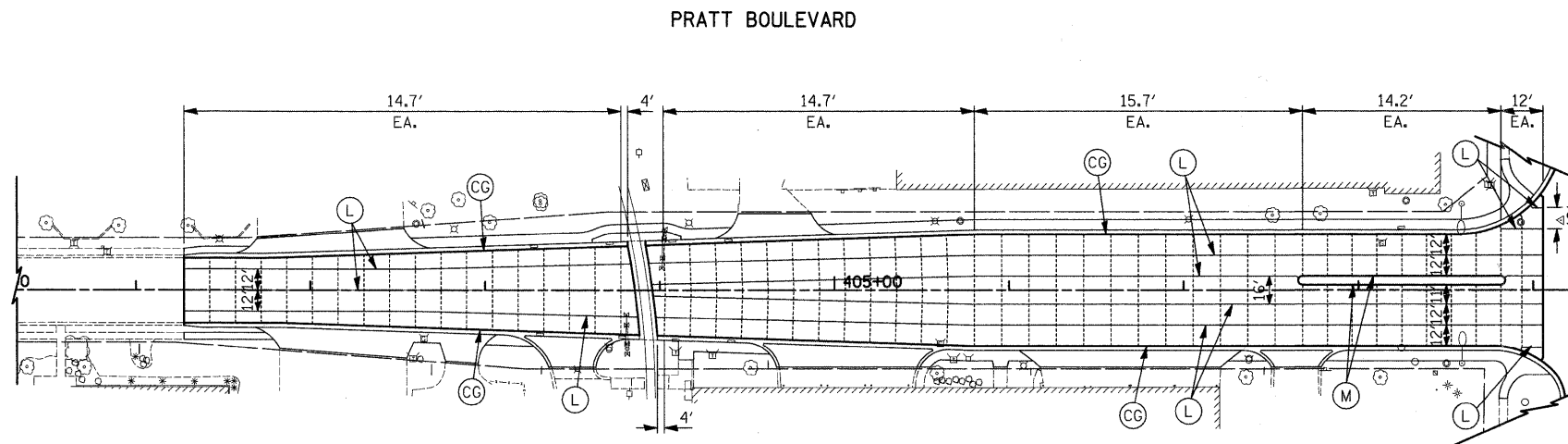


DATE	BY
DESIGNED	BLG
DRAWN	BLG
CHECKED	DJK
DATE	10-22-10

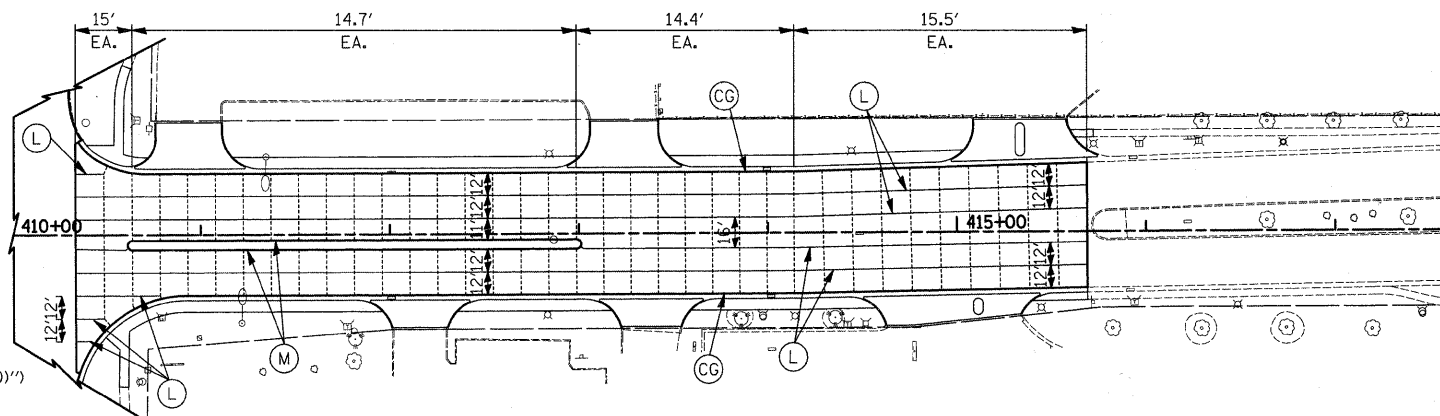
DATE	BY
DESIGNED	BLG
DRAWN	BLG
CHECKED	DJK
DATE	10-22-10



LEGEND

- LONGITUDINAL JOINT (SEE CALL-OUTS FOR TYPE AND BAR SPACING)
- SAWED TRANSVERSE CONSTRUCTION JOINT WITH SMOOTH DOWEL BARS (EPOXY COATED), 1 1/2" DIA., 18" LONG @ 12" C-C (INCLUDED IN THE COST OF "PCC PAVEMENT 10" (JOINTED))
- 12' EA. LENGTH OF PAVEMENT PANEL BETWEEN SAWED CONTRACTION JOINTS
- CG CONSTRUCTION JOINT, NO. 6 X 24" DEFORMED TIE BARS (EPOXY COATED) GROUTED IN PLACE AT 24" C-C (INCLUDED IN COST OF "COMBINATION CONCRETE CURB AND GUTTER, TYPE B-6.24")
- M CONSTRUCTION JOINT, NO. 6 X 24" DEFORMED TIE BARS (EPOXY COATED) GROUTED IN PLACE AT 24" C-C (INCLUDED IN COST OF "CONCRETE MEDIAN, TYPE SB-6.12")
- L LONGITUDINAL CONSTRUCTION JOINT - NO. 6 X 24" DEFORMED TIE BARS (EPOXY COATED) AT 24" C-C (INCLUDED IN COST OF "PCC PAVT 10" (JOINTED))

PRATT BOULEVARD



NOTES:

1. TRANSVERSE CONTRACTION JOINTS SHALL BE ALIGNED ACROSS SOLID BARRIER MEDIANS. JOINT LAYOUT MAY BE MODIFIED (+/- 3 FT PER STANDARD 420101) UPON APPROVAL BY THE ENGINEER TO INCORPORATE CHANGES DURING CONSTRUCTION.
2. PAVEMENT ROUND-OUTS FOR MANHOLES AND VALVE VAULTS SHALL BE CONSTRUCTED IN ACCORDANCE WITH HIGHWAY STANDARD 420111.
3. SEE IDOT STANDARDS 420001, 420101, AND 420111 FOR ADDITIONAL DETAILS.

FILE NAME = ...\\ced\sheet\2363_Jointing.dgn	USER NAME = kpk	DESIGNED - BLG	REVISD -	STATE OF ILLINOIS DEPARTMENT OF TRANSPORTATION	IL ROUTE 83 (BUSSE ROAD) AND PRATT BOULEVARD JOINTING PLAN	F.A.P. RTE. 334	SECTION 09-00057-00-CH	COUNTY COOK	TOTAL SHEETS 103	SHEET NO. 45		
PLOT SCALE = 50,0000 ' / IN.	CHECKED - DJK	REVISD -	SCALE: 1" = 50'			SHEET NO. 1 OF 1 SHEETS	CONTRACT NO. 63523					
PLOT DATE = 10/22/2010	DATE - 10-22-10	REVISD -	FED. ROAD DIST. NO. 1 ILLINOIS FED. AID PROJECT M-9003660									