



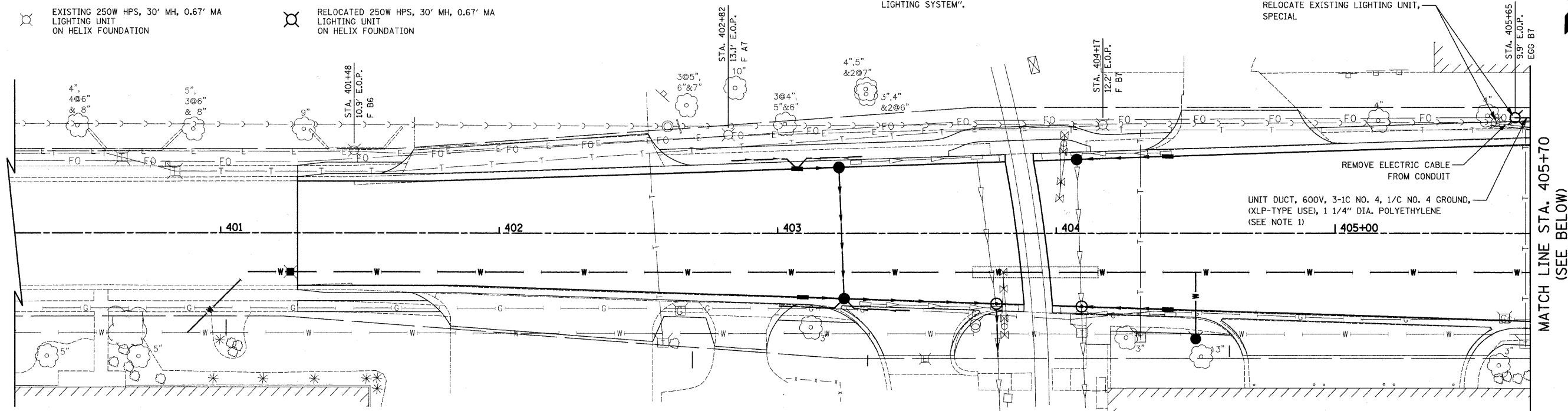


**LEGEND**

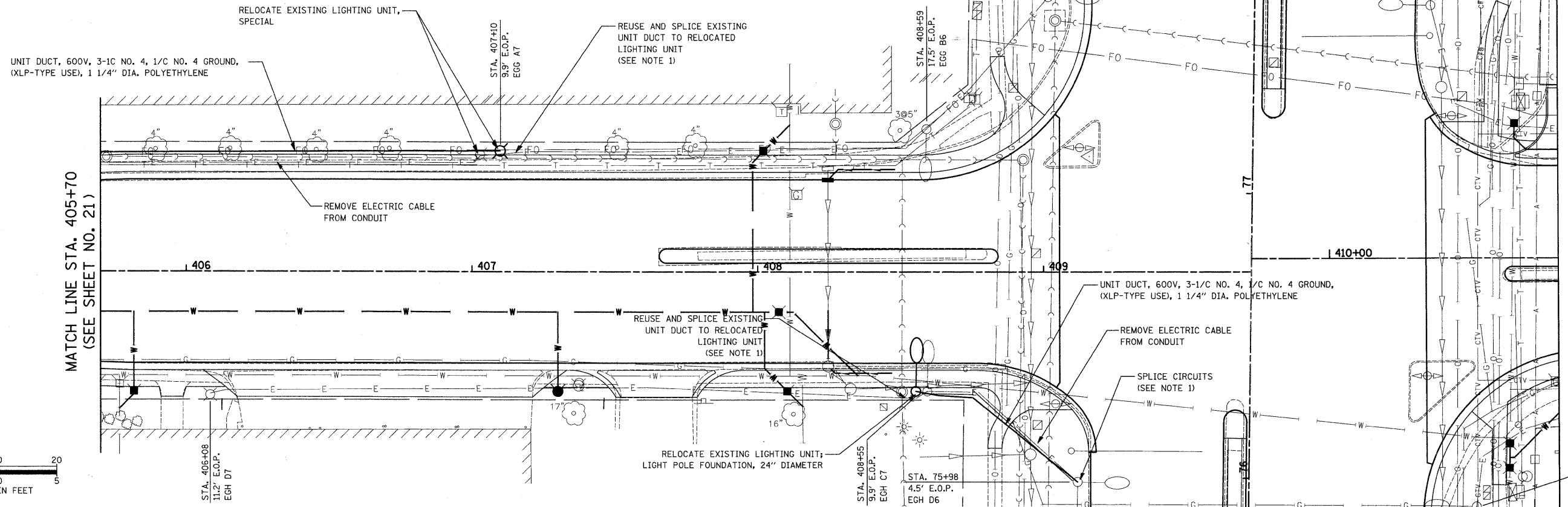
-  EXISTING 400W HPS, 45' MH, 10' MA LIGHTING UNIT ON CONCRETE FOUNDATION
-  RELOCATED 400W HPS, 45' MH, 10' MA LIGHTING UNIT ON CONCRETE FOUNDATION
-  EXISTING 250W HPS, 30' MH, 0.67' MA LIGHTING UNIT ON HELIX FOUNDATION
-  RELOCATED 250W HPS, 30' MH, 0.67' MA LIGHTING UNIT ON HELIX FOUNDATION

**NOTES:**

1. SEE EXISTING WIRING DIAGRAM ON SHEET 67 FOR CIRCUITRY.
2. SEE LIGHT POLE FOUNDATION ADJUSTMENT DETAIL ON SHEET 68.
3. THERE SHALL BE NO UNDERGROUND SPLICING OF UNIT DUCT CONDUCTORS EXCEPT AT THE POLE BASE.
4. CONTINUITY OF EQUIPMENT GROUNDING CONDUCTOR FROM CONTROLLER TO THE LAST POLE OF EACH IMPACTED CIRCUIT SHALL BE CONFIRMED. THIS WORK WILL NOT BE PAID FOR SEPARATELY BUT SHALL BE INCLUDED IN "MAINTENANCE OF LIGHTING SYSTEM".



MATCH LINE STA. 405+70 (SEE BELOW)



MATCH LINE STA. 410+80 (SEE SHEET NO. 66)



DATE	
BY	
REVIEWED	
PLANNED	
NOTE BOOK	
NO.	

DATE	
BY	
REVIEWED	
PLANNED	
NOTE BOOK	
NO.	

FILE NAME = ...\\cad\sheet\2363\_Light\_01.dgn

USER NAME = krk  
 PLOT SCALE = 20.0000' / IN.  
 PLOT DATE = 11/3/2010

DESIGNED - SJC  
 DRAWN - SJC  
 CHECKED - DNM  
 DATE - 10-22-10

REVISED -  
 REVISED -  
 REVISED -  
 REVISED -

**STATE OF ILLINOIS  
 DEPARTMENT OF TRANSPORTATION**

**IL ROUTE 83 (BUSSE ROAD) AND PRATT BOULEVARD  
 LIGHTING PLAN**

SCALE: 1" = 20' SHEET NO. 1 OF 2 SHEETS STA. 401+27.62 TO STA. 410+80.00

F.A.P. RTE.	SECTION	COUNTY	TOTAL SHEETS	SHEET NO.
334	09-00057-00-CH	COOK	103	65
CONTRACT NO. 63523				
FED. ROAD DIST. NO. 1 ILLINOIS FED. AID PROJECT M-900316601				