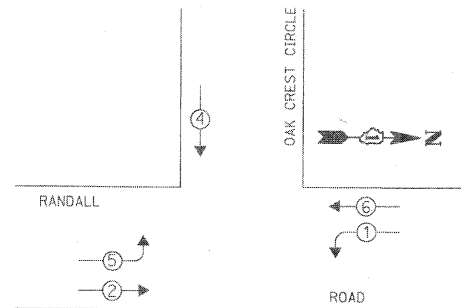


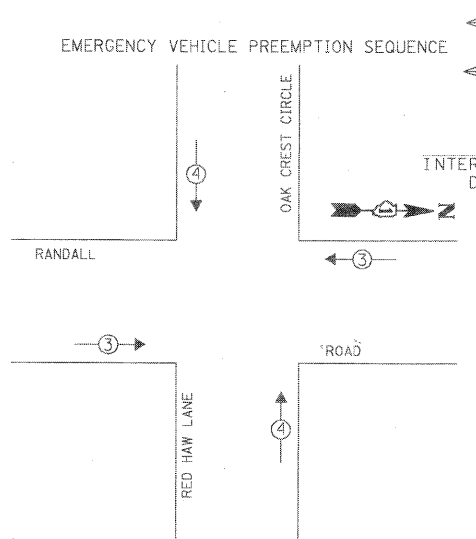
DATE: \_\_\_\_\_ BY: \_\_\_\_\_  
 SURVEYED: \_\_\_\_\_ PLOTTED: \_\_\_\_\_  
 PROFILE: \_\_\_\_\_ NOTE BOOK: \_\_\_\_\_  
 NO. \_\_\_\_\_ DATE: \_\_\_\_\_ BY: \_\_\_\_\_  
 SURVEYED: \_\_\_\_\_ PLOTTED: \_\_\_\_\_  
 PROFILE: \_\_\_\_\_ NOTE BOOK: \_\_\_\_\_  
 NO. \_\_\_\_\_

**CHRISTOPHER B. BURKE ENGINEERING LTD.**  
 9575 West Higgins Road, Suite 600  
 Rosemont, Illinois 60018  
 (847) 823-0500

**CONTROLLER SEQUENCE**



**PHASE DESIGNATION DIAGRAM**



RESTORATION OF WORK AREA. RESTORATION OF THE TRAFFIC SIGNAL WORK AREA SHALL BE INCIDENTAL TO THE RELATED PAY ITEM SUCH AS FOUNDATION, CONDUIT, HANDHOLE, TRENCH AND BACKFILL, ETC., AND NO EXTRA COMPENSATION SHALL BE ALLOWED. ALL ROADWAY SURFACES SUCH AS SHOULDERS, MEDIANS, SIDEWALKS, PAVEMENT, ETC. SHALL BE REPLACED IN KIND. ALL DAMAGE TO MOWED LAWNS SHALL BE REPLACED WITH AN APPROVED SOD, AND ALL DAMAGE TO UNMOWED FIELDS SHALL BE SEEDED IN ACCORDANCE WITH STANDARD SPECIFICATIONS 252 AND 250 RESPECTIVELY.

**LEGEND**

- ◀ \* ▶ DUAL ENTRY PHASE
- ▶ \* ◀ SINGLE ENTRY PHASE
- ▶ \* ◀ PEDESTRIAN PHASE
- \* NUMBER REFERS TO ASSOCIATED PHASE

TRACER CABLE

EXISTING INTERCONNECT TO DEAN STREET

EXISTING EMERGENCY VEHICLE PREEMPTORS	
EMERGENCY VEHICLE PREEMPTOR	3 4
MOVEMENT	← → ↑ ↓

I.D.O.T. TRAFFIC SIGNAL INSTALLATION ELECTRICAL SERVICE REQUIREMENTS					TOTAL WATTAGE
TYPE	NO. OF LAMPS	WATTAGE X INCAND.	LED	X % OPERATION	
SIGNAL (RED)	12		17	0.50	102.00
(YELLOW)	12		25	0.25	75.00
(GREEN)	12		15	0.25	45.00
ARROW	8		12	0.10	9.60
PED. SIGNAL	-		25	1.00	-
CONTROLLER	1		100	1.00	100.00
ILLUM. SIGN	-		25	0.05	-
VIDEO SYSTEM	-		150	1.00	-
FLASHER	-			0.50	-

ENERGY COSTS TO: TOTAL = 331.60  
**KANE COUNTY DIVISION OF TRANSPORTATION**  
 41W011 BURLINGTON ROAD  
 ST. CHARLES, IL 60175  
 ENERGY SUPPLY: CONTACT: MIKE WIDHALM  
 PHONE: (847) 608-2376  
 COMPANY: COMED

FOUNDATION (DEPTH)	FT. (m)	CABLE SLACK	FT. (m)	VERTICAL	FT. (m)
TYPE A - POST	4 (1.2)	HANDHOLE	6.5 (2.0)	ALL FOUNDATIONS	3.5 (1.0)
D - CONTROLLER	4 (1.2)	DOUBLE HANDHOLE	13 (4.0)	MAST ARM (L) POLE	20'+H-2=
E - M. ARM POLE	10 (3.0)	SIGNAL POST	2 (1.0)	(6m+H-0.6m)=	
24" (600mm)	10 (3.0)	CONTROLLER CAB.	1 (0.5)	BRACKET MOUNTED	13 (4.0)
30" (750mm)	15 (4.6)	FIBER OPTIC	13 (4.0)	PED. PUSHBUTTON	4 (1.2)
36" (900mm)	15 (4.6)	ELECTRIC SERVICE	1 (0.5)	ELECTRIC SERVICE	13.5 (4.1)
		GROUND CABLE	1 (0.5)	SERVICE TO GROUND	13.5 (4.1)
				POST MOUNTED	6 (1.8)

FILE NAME = USER NAME = FPACIONE  
 DESIGNED - ABR REVISIONS -  
 DRAWN - FCP REVISIONS -  
 CHECKED - MJT REVISIONS -  
 PLOT DATE = 11/3/2010 DATE - AUGUST 31, 2010 REVISIONS -

**STATE OF ILLINOIS  
 DEPARTMENT OF TRANSPORTATION**

**SCHEDULE OF QUANTITIES, CABLE PLAN, PHASE DESIGNATION DIAGRAM  
 AND EMERGENCY VEHICLE PREEMPTION SEQUENCE  
 RANDALL ROAD AND RED HAW LANE**

F.A.P. RTE.	SECTION	COUNTY	TOTAL SHEETS	SHEET NO.
336	09-00237-02-TL	KANE	100	6

CONTRACT NO. 63525  
 ILLINOIS FED. AID PROJECT

**CABLE PLAN LEGEND**

- EXISTING PROPOSED
- 8" (200mm) TRAFFIC SIGNAL SECTION
- 12" (300mm) TRAFFIC SIGNAL SECTION
- 12" (300mm) PEDESTRIAN SIGNAL SECTION
- 12" (300mm) PEDESTRIAN SIGNAL SECTION
- CONTROLLER CABINET
- SERVICE INSTALLATION
- TELEPHONE INSTALLATION
- VEHICLE DETECTOR, INDUCTION LOOP
- MAGNETIC DETECTOR
- EMERGENCY VEHICLE LIGHT DETECTOR
- CONFIRMATION BEACON
- PUSHBUTTON DETECTOR
- DENOTES NUMBER OF CONDUCTORS. ALL CABLE NO. 14 EXCEPT AS INDICATED. ALL LOOP DETECTOR CABLE TO BE SHIELDED.
- GROUND CABLE IN CONDUIT NO. 6 SOLID COPPER (GREEN)
- FIBER OPTIC CABLE IN CONDUIT NO. 62.5/125 2-MM12F SM12F
- FIBER OPTIC CABLE IN CONDUIT NO. 62.5/125 2-MM12F SM24F
- SIGNAL FACE WITH BACKPLATE. "P" INDICATES PROGRAMMED HEAD.
- RAILROAD CONTROL CABINET
- ILLUMINATED SIGN "NO LEFT TURN"
- ILLUMINATED SIGN "NO RIGHT TURN"
- GROUND ROD AT HANDHOLE (H), DOUBLE HANDHOLE (H), OR CONTROLLER (C)
- GROUND ROD AT POST (P) OR MAST ARM POLE (MA)
- GROUND ROD AT ELECTRIC SERVICE INSTALLATION
- UNINTERRUPTIBLE POWER SUPPLY
- VENDOR SPECIFIC CABLE
- DOME CAMERA (PAN/TILT/ZOOM)
- VIDEO DETECTION CAMERA

**CONSTRUCTION NOTE:**

- ① INSTALL NEW 50"x67" PAD FOR EXISTING UNINTERRUPTIBLE POWER SUPPLY.
- ② ADD NEW GROUNDING

NOTE:  
 THE TRAFFIC SIGNAL CONTROLLER EQUIPMENT FOR THIS PROJECT SHALL BE "EAGLE" TO MATCH THE EXISTING ADJACENT SYSTEM.

SCHEDULE OF QUANTITIES		
ITEM	UNIT	TOTAL
PORTLAND CEMENT CONCRETE SIDEWALK 5 INCH	SQ FT	24
MAINTENANCE OF EXISTING TRAFFIC SIGNAL INSTALLATION	EACH	1
MODIFY EXISTING CONTROLLER CABINET	EACH	1
GROUNDING EXISTING HANDHOLE FRAME AND COVER	EACH	7
ELECTRIC CABLE IN CONDUIT, GROUNDING NO. 6 1C	FOOT	599
TERMINATE FIBER IN CABINET	EACH	6
SPlice FIBER IN CABINET	EACH	6