

DATE: _____ BY: _____
 SURVEYED: _____ PLOTTED: _____ CHECKED: _____
 PLAN: _____ NO. _____
 NOTE BOOK: _____
 NO. _____
 STRUCTURE: _____ NOTATION: _____
 DATE: _____ BY: _____
 SURVEYED: _____ PLOTTED: _____ CHECKED: _____
 PROFILE: _____ NO. _____
 NOTE BOOK: _____
 NO. _____
 STRUCTURE: _____ NOTATION: _____

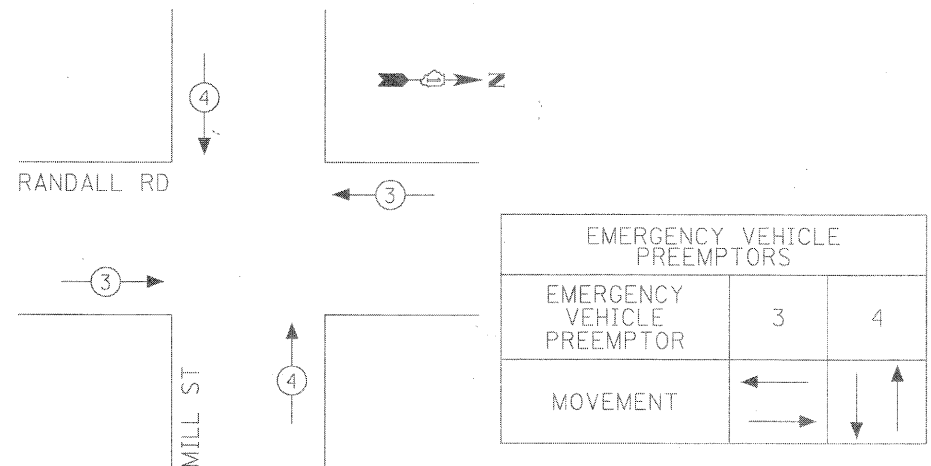
CHRISTOPHER B. BURKE ENGINEERING LTD.
 9575 West Higgins Road, Suite 600
 Rosemont, Illinois 60018
 (847) 823-0500

CONSTRUCTION NOTES:

- ① REPLACE EXISTING CONTROLLER AND MALFUNCTION MANAGEMENT UNIT.
- ② ALL EXISTING CONFIRMATION BEACONS SHALL BE RETROFITTED WITH L.E.D. INDICATIONS. THIS WORK SHALL BE INCLUDED IN THE COST FOR THE PAY ITEM: UNINTERRUPTIBLE POWER SUPPLY.
- ③ REPLACE EXISTING FIBER OPTIC INTERCONNECT CENTER.
- ④ ADD NEW UNINTERRUPTIBLE POWER SUPPLY.
- ⑤ INSTALL PTZ CAMERA ON THE COMBINATION MAST ARM AND POLE IN THE NORTHEAST CORNER.
- ⑥ INSTALL NEW 50"x67" PAD FOR UNINTERRUPTIBLE POWER SUPPLY.
- ⑦ ADD NEW GROUNDING.

SCHEDULE OF QUANTITIES		
ITEM	UNIT	TOTAL
PORTLAND CEMENT CONCRETE SIDEWALK 5 INCH	SQ FT	24
MAINTENANCE OF EXISTING TRAFFIC SIGNAL INSTALLATION	EACH	1
FULL-ACTUATED CONTROLLER IN EXISTING CABINET, SPECIAL	EACH	1
REMOVE EXISTING TRAFFIC SIGNAL EQUIPMENT	EACH	1
GROUNDING EXISTING HANDHOLE FRAME AND COVER	EACH	8
UNINTERRUPTIBLE POWER SUPPLY	EACH	1
ELECTRIC CABLE IN CONDUIT, GROUNDING NO. 6 1C	FOOT	668
TERMINATE FIBER IN CABINET	EACH	6
FIBER OPTIC INTERCONNECT CENTER	EACH	1
SPLICE FIBER IN CABINET	EACH	6
OUTDOOR RATED NETWORK CABLE	FOOT	189
UPS BATTERY BACK-UP CABINET	EACH	1
VIDEO TRAFFIC MONITORING SYSTEM WITH PTZ CAMERA	EACH	1
MALFUNCTION MANAGEMENT UNIT	EACH	1
ETHERNET MANAGED SWITCH, TYPE 1	EACH	1

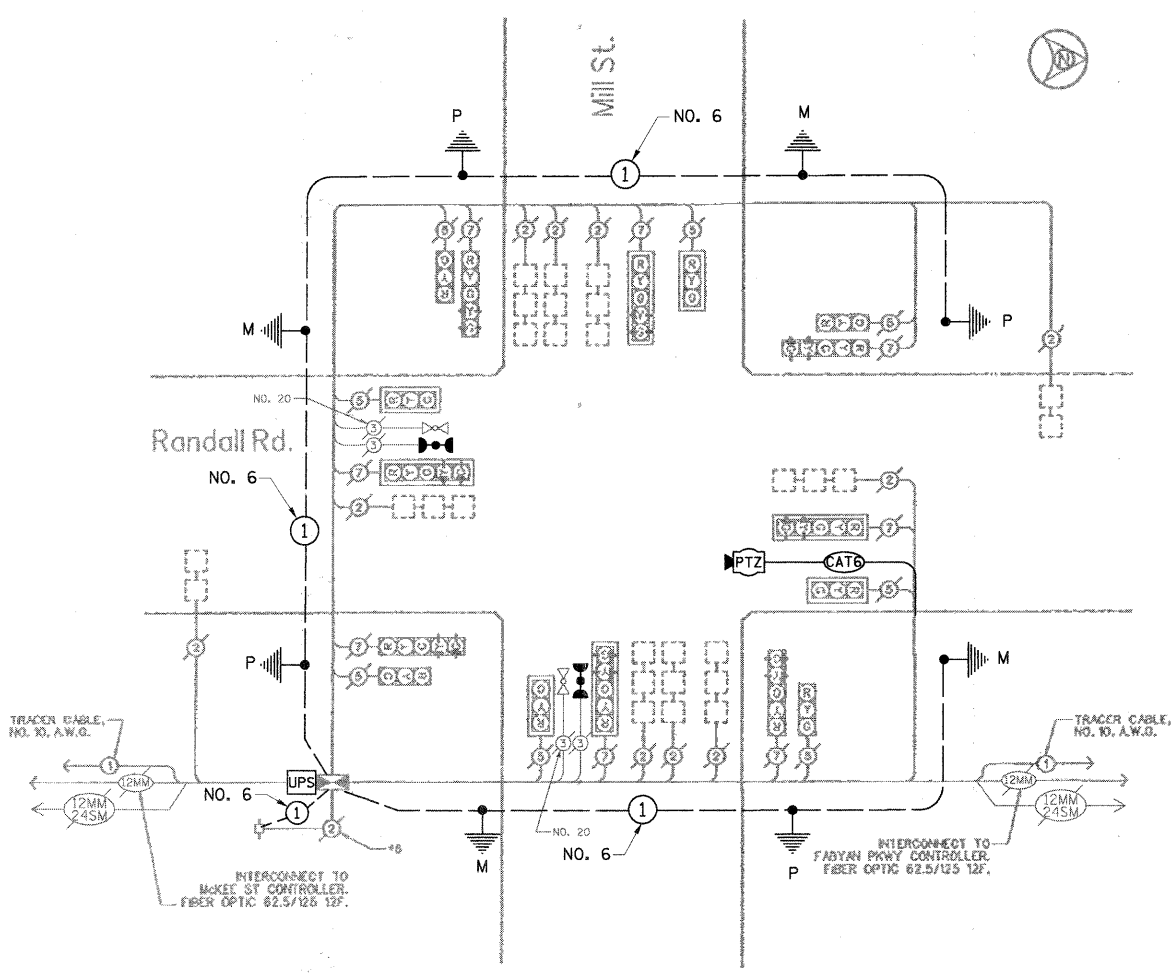
EMERGENCY VEHICLE PREEMPTION SEQUENCE



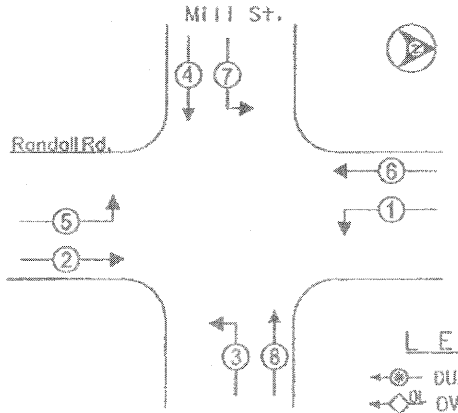
CABLE PLAN LEGEND

- | | | |
|----------|----------|---|
| EXISTING | PROPOSED | |
| ⊙ | ⊙ | 6" (200MM) TRAFFIC SIGNAL SECTION |
| ⊙ | ⊙ | 12" (300MM) TRAFFIC SIGNAL SECTION |
| ⊙ | ⊙ | 12" (300MM) PEDESTRIAN SIGNAL SECTION |
| ⊙ | ⊙ | 12" (300MM) PEDESTRIAN SIGNAL SECTION |
| ⊙ | ⊙ | CONTROLLER CABINET |
| ⊙ | ⊙ | SERVICE INSTALLATION |
| ⊙ | ⊙ | VEHICLE DETECTOR, INDUCTION LOOP |
| ⊙ | ⊙ | MAGNETIC DETECTOR |
| ⊙ | ⊙ | EMERGENCY VEHICLE LIGHT DETECTOR |
| ⊙ | ⊙ | CONFIRMATION BEACON |
| ⊙ | ⊙ | PUSH/BUTTON DETECTOR |
| ⊙ | ⊙ | ⊙ DENOTES NUMBER OF CONDUCTORS. ALL CABLE NO. 14 EXCEPT AS INDICATED. ALL LOOP DETECTOR CABLE TO BE SHIELDED. |
| ⊙ | ⊙ | ⊙ SIGNAL FACE WITH BACKPLATE. "P" INDICATES PROGRAMMED HEAD. |
| ⊙ | ⊙ | ⊙ LUMINAIRE |

CABLE PLAN



CONTROLLER SEQUENCE



LEGEND

- ⊙ DUAL ENTRY PHASE
- ⊙ OVERLAP
- ⊙ PEDESTRIAN PHASE
- * NUMBER REFERS TO ASSOCIATED PHASE.

THE TRAFFIC SIGNAL CONTROL EQUIPMENT FOR THIS PROJECT SHALL BE "EAGLE" TO MATCH THE EXISTING ADJACENT SYSTEM.

NOTE: EQUIPMENT SUBSTITUTION WILL NOT BE ALLOWED



METRO TRANSPORTATION GROUP, INC.
 TRANSPORTATION PLANNING, ENGINEERING AND DESIGN
 1300 GREENBROOK, HANOVER PARK, IL 60103 PH# 630 213-1000

REVISIONS		
NO.	DATE	DESCRIPTION
1	04/15/99	ADD INTERCONNECT

CABLE PLAN, PHASE DESIGNATION DIAGRAM and SCHEDULE OF QUANTITIES
 RANDALL RD. @ MILL ST
 BATAVIA, ILLINOIS

FILE NAME: mill_op.dgn	SHEET NO.: 7
DATE: Apr 11 15 1999	OF 24
PROJECT NO.: 3857-00	