

SURVEYED BY: _____ DATE: _____
 PLOTTED BY: _____ CHECKED BY: _____
 PLANNED BY: _____ NO. _____
 NOTE BOOK NO. _____
 CADD FILE NAME: _____
CHRISTOPHER B. BURKE ENGINEERING LTD.
 9575 West Higgins Road, Suite 600
 Rosemont, Illinois 60018
 (847) 823-0500

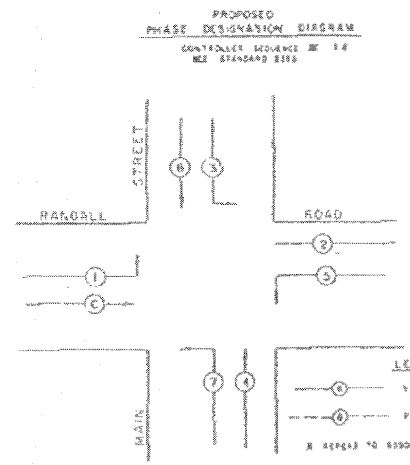
CONSTRUCTION NOTES:

- ① REPLACE EXISTING CONTROLLER AND MALFUNCTION MANAGEMENT UNIT.
- ② ALL EXISTING CONFIRMATION BEACONS SHALL BE RETROFITTED WITH L.E.D. INDICATIONS. THIS WORK SHALL BE INCLUDED IN THE COST FOR THE PAY ITEM: UNINTERRUPTIBLE POWER SUPPLY.
- ③ ADD NEW UNINTERRUPTIBLE POWER SUPPLY.
- ④ INSTALL NEW 50"x67" PAD FOR UNINTERRUPTIBLE POWER SUPPLY.
- ⑤ ADD NEW GROUNDING.

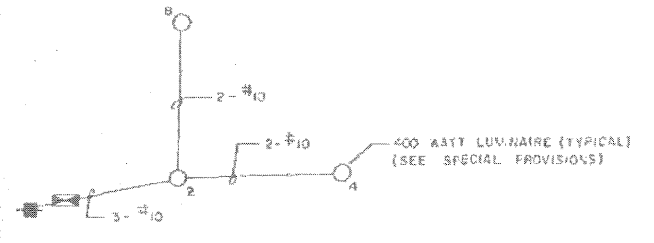
SCHEDULE OF QUANTITIES

ITEM	UNIT	TOTAL
PORTLAND CEMENT CONCRETE SIDEWALK 5 INCH	SQ FT	24
MAINTENANCE OF EXISTING TRAFFIC SIGNAL INSTALLATION	EACH	1
FULL-ACTUATED CONTROLLER IN EXISTING CABINET, SPECIAL	EACH	1
REMOVE EXISTING TRAFFIC SIGNAL EQUIPMENT	EACH	1
GROUNDING EXISTING HANDHOLE FRAME AND COVER	EACH	6
UNINTERRUPTIBLE POWER SUPPLY	EACH	1
ELECTRIC CABLE IN CONDUIT, GROUNDING NO. 6 1C	FOOT	696
TERMINATE FIBER IN CABINET	EACH	6
SPLICE FIBER IN CABINET	EACH	6
UPS BATTERY BACK-UP CABINET	EACH	1
MALFUNCTION MANAGEMENT UNIT	EACH	1

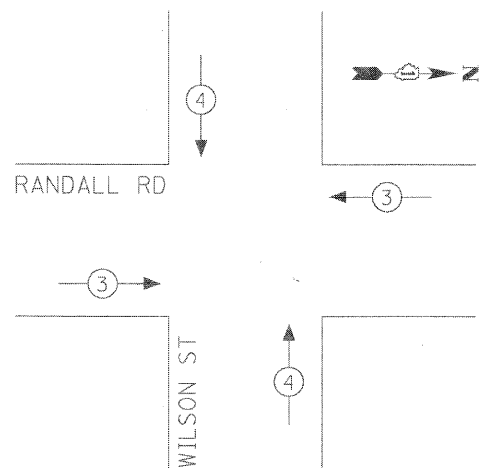
- CABLE PLAN LEGEND**
- [G] 8" TRAFFIC SIGNAL SECTION
 - [R] 12" TRAFFIC SIGNAL SECTION
 - [W] 12" PEDESTRIAN SIGNAL SECTION
 - [C] CONTROLLER CABINET
 - [S] SERVICE INSTALLATION
 - [V] VEHICLE DETECTOR, INDUCTION LOOP
 - [F] PUSHBUTTON DETECTOR
 - (2) DENOTES NUMBER OF CONDUCTORS (HEW).
 - (2) ALL LOOP DETECTOR CABLE TO BE SHIELDED. ALL CABLE NO. 14 EXCEPT AS INDICATED.
 - (2) INDICATES EXISTING CABLE
 - [P] SIGNAL FACE WITH BACKPLATE
 - [P] INDICATES PROGRAMMED
 - [R] EXISTING SIGNAL SECTION
 - [M] MAGNETIC DETECTOR
 - [O] OPTICAL DETECTOR



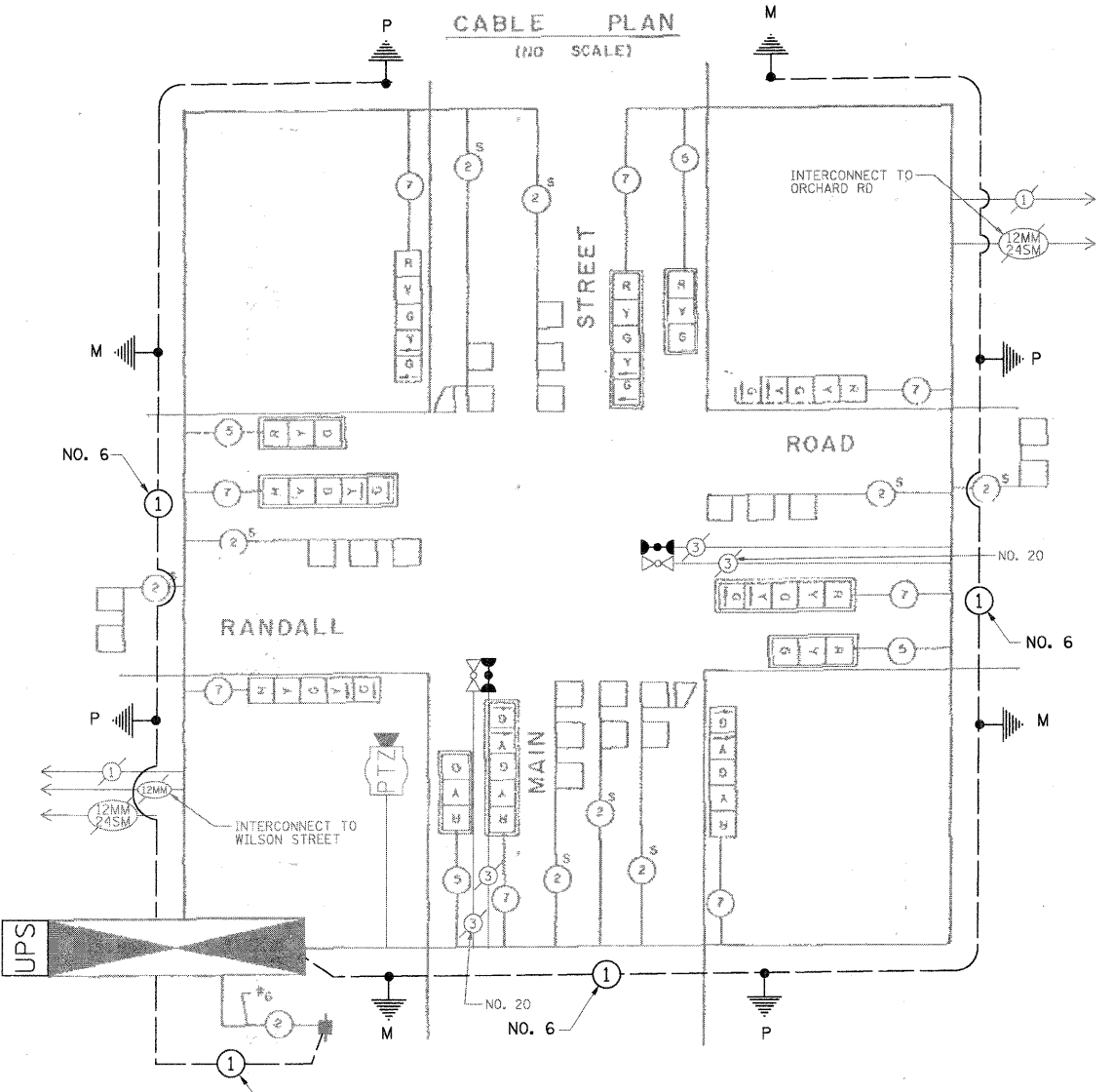
LIGHTING CABLE PLAN



EMERGENCY VEHICLE PREEMPTION SEQUENCE



EMERGENCY VEHICLE PREEMPTORS		
EMERGENCY VEHICLE PREEMPTOR	3	4
MOVEMENT	←	↓
	→	↑



REVISIONS		CABLE PLAN, SCHEDULE OF QUANTITIES & SIGNAL SEQUENCES			
NAME	DATE				
HON	12-8-89				
		RANDALL ROAD AT MAIN STREET			
		SCALE: NONE		DRAWN BY: KAG	
		DATE: 9-15-89		CHECKED BY: HDJ	