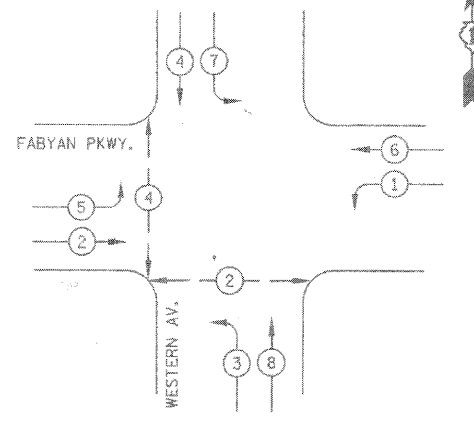
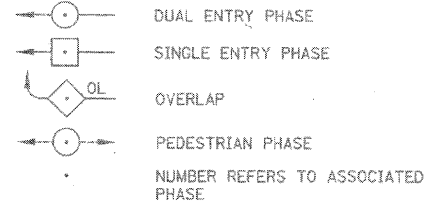


| | | | | |
|-----------------------|----------------|---------------------------|--------------|-----------|
| F.A.U. RTE. | SECTION | COUNTY | TOTAL SHEETS | SHEET NO. |
| 363 | 06-00339-00-TL | KANE | 33 | 4 |
| STA. | | TO STA. | | |
| FED. ROAD DIST. NO. 7 | | ILLINOIS FED. AID PROJECT | | |

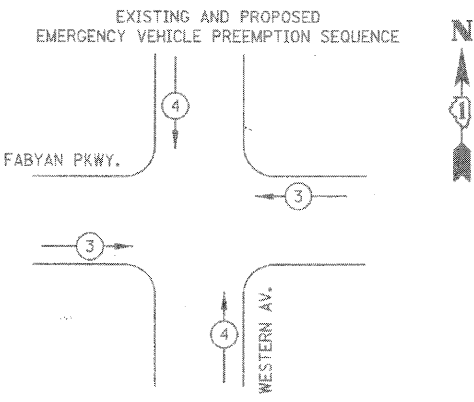
EXISTING AND PROPOSED CONTROLLER SEQUENCE



LEGEND



PHASE DESIGNATION DIAGRAM



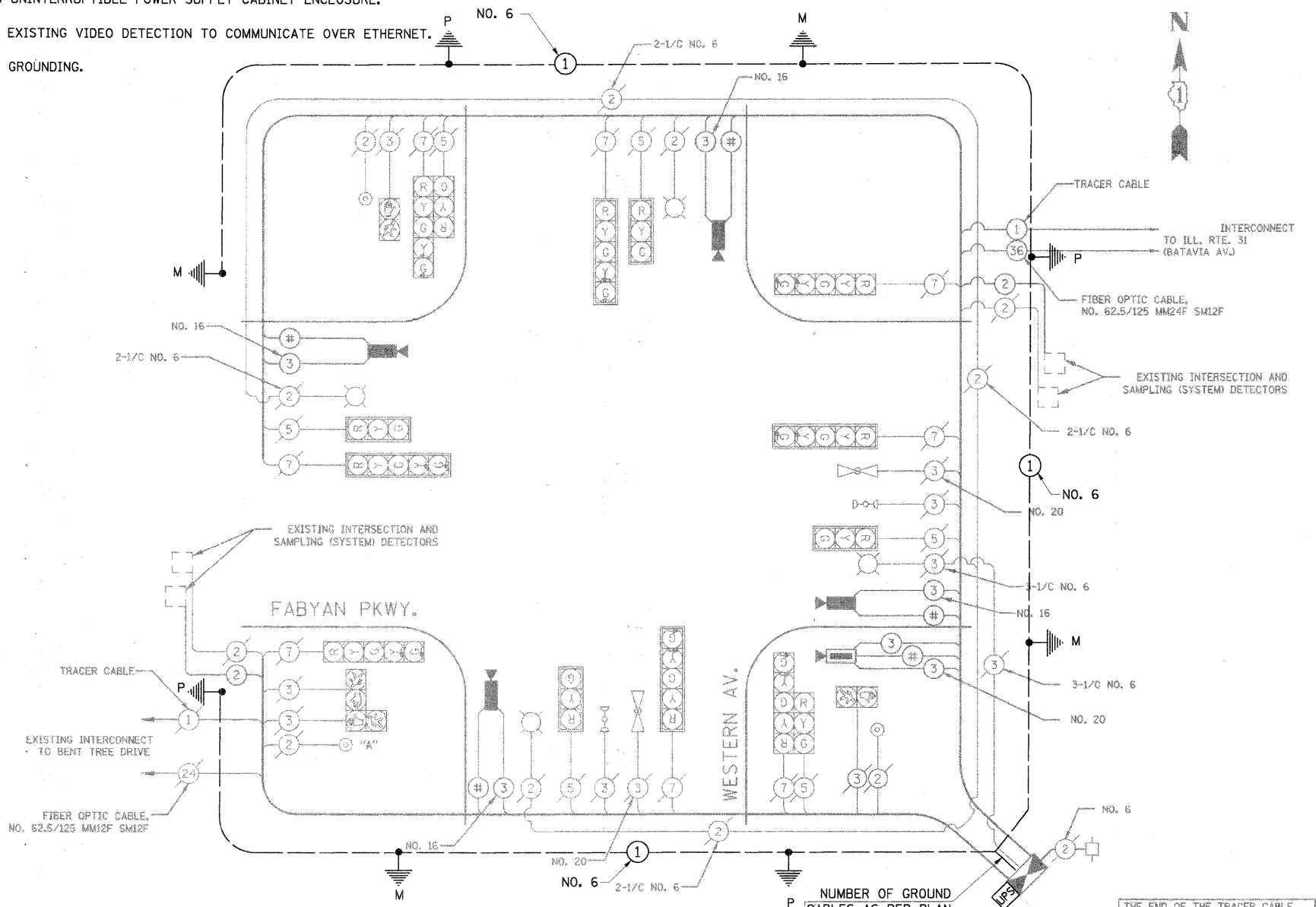
| | | |
|-----------------------------|---|---|
| EMERGENCY VEHICLE PREEMPTOR | 3 | 4 |
| MOVEMENT | ← | → |

CABLE PLAN LEGEND

- | | | |
|----------|----------|---|
| EXISTING | PROPOSED | |
| [Symbol] | [Symbol] | 8" (200mm) TRAFFIC SIGNAL SECTION |
| [Symbol] | [Symbol] | 12" (300mm) TRAFFIC SIGNAL SECTION |
| [Symbol] | [Symbol] | 12" (300mm) PEDESTRIAN SIGNAL SECTION |
| [Symbol] | [Symbol] | 12" (300mm) PEDESTRIAN SIGNAL SECTION |
| [Symbol] | [Symbol] | CONTROLLER CABINET |
| [Symbol] | [Symbol] | SERVICE INSTALLATION |
| [Symbol] | [Symbol] | TELEPHONE CONNECTION |
| [Symbol] | [Symbol] | MAGNETIC DETECTOR |
| [Symbol] | [Symbol] | EMERGENCY VEHICLE LIGHT DETECTOR |
| [Symbol] | [Symbol] | CONFIRMATION BEACON |
| [Symbol] | [Symbol] | PUSHBUTTON DETECTOR |
| [Symbol] | [Symbol] | VEHICLE DETECTOR, INDUCTION LOOP |
| [Symbol] | [Symbol] | ② DENOTES NUMBER OF CONDUCTORS, ALL CABLE NO. 14 EXCEPT AS INDICATED. ALL LOOP DETECTOR CABLE TO BE SHIELDED. |
| [Symbol] | [Symbol] | MICROWAVE VEHICLE SENSOR |
| [Symbol] | [Symbol] | SIGNAL FACE WITH BACKPLATE, "P" INDICATES PROGRAMMED HEAD |
| [Symbol] | [Symbol] | RAILROAD CONTROL CABINET |
| [Symbol] | [Symbol] | ILLUMINATED SIGN "NO LEFT TURN" |
| [Symbol] | [Symbol] | ILLUMINATED SIGN "NO RIGHT TURN" |
| [Symbol] | [Symbol] | GROUND ROD AT HANDHOLE (H), DOUBLE HANDHOLE (H), OR CONTROLLER (C). |
| [Symbol] | [Symbol] | GROUND ROD AT POST (P), OR MAST ARM POLE (MA). |
| [Symbol] | [Symbol] | GROUND ROD AT ELECTRIC SERVICE INSTALLATION |
| [Symbol] | [Symbol] | ① GROUND CABLE IN CONDUIT NO. 6 SOLID COPPER (GREEN) |
| [Symbol] | [Symbol] | ②④ FIBER OPTIC CABLE IN CONDUIT NO. 62.5/125 2-MM12F SM12F |
| [Symbol] | [Symbol] | # COAXIAL CABLE |
| [Symbol] | [Symbol] | IMAGE SENSOR |
| [Symbol] | [Symbol] | STREET LIGHT LUMINAIRE |
| [Symbol] | [Symbol] | DOME PAN/TILT/ZOOM (PTZ) CAMERA |
| [Symbol] | [Symbol] | UNINTERRUPTIBLE POWER SUPPLY |
| [Symbol] | [Symbol] | "R" RELOCATED SIGNAL EQUIPMENT |

CONSTRUCTION NOTES:

- REPLACE EXISTING FIBER OPTIC INTERCONNECT CENTER.
- UPGRADE EXISTING UNINTERRUPTIBLE POWER SUPPLY TO ETHERNET AND REPLACE EXISTING UNINTERRUPTIBLE POWER SUPPLY CABINET ENCLOSURE.
- UPGRADE EXISTING VIDEO DETECTION TO COMMUNICATE OVER ETHERNET.
- ADD NEW GROUNDING.



| ITEM | UNIT | TOTAL |
|---|------|-------|
| MAINTENANCE OF EXISTING TRAFFIC SIGNAL INSTALLATION | EACH | 1 |
| MODIFY EXISTING CONTROLLER CABINET | EACH | 1 |
| REMOVE EXISTING TRAFFIC SIGNAL EQUIPMENT | EACH | 1 |
| GROUNDING EXISTING HANDHOLE FRAME AND COVER | EACH | 6 |
| ELECTRIC CABLE IN CONDUIT, GROUNDING NO. 6 1C | FOOT | 745 |
| TERMINATE FIBER IN CABINET | EACH | 6 |
| MODIFY VIDEO PROCESSING UNIT | EACH | 1 |
| FIBER OPTIC INTERCONNECT CENTER | EACH | 1 |
| SPlice FIBER IN CABINET | EACH | 6 |
| UPGRADE EXISTING UPS BATTERY BACK-UP SYSTEM | EACH | 1 |
| UPS BATTERY BACK-UP CABINET | EACH | 1 |
| VIDEO ENCODER, VIDEO DETECTION SYSTEM | EACH | 1 |

CONSTRUCTION NOTES:

- REPLACE EXISTING FIBER OPTIC INTERCONNECT CENTER.
- UPGRADE EXISTING UNINTERRUPTIBLE POWER SUPPLY TO ETHERNET AND REPLACE EXISTING UNINTERRUPTIBLE POWER SUPPLY CABINET ENCLOSURE.
- UPGRADE EXISTING VIDEO DETECTION TO COMMUNICATE OVER ETHERNET.

| TYPE | NO. LAMPS | WATTAGE INCAND. | LED | % OPERATION | TOTAL WATTAGE |
|---------------|-----------|-----------------|-----|-------------|---------------|
| SIGNAL (RED) | 14 | | 17 | 0.50 | 119 |
| (YELLOW) | 14 | | 25 | 0.25 | 88 |
| (GREEN) | 14 | | 15 | 0.25 | 53 |
| ARROW | 16 | | 12 | 0.10 | 20 |
| PED. SIGNAL | 4 | | 25 | 1.00 | 100 |
| CONTROLLER | 1 | | 100 | 1.00 | 100 |
| VIDEO SYSTEMS | 1 | | 150 | 1.00 | 150 |
| LUMINAIRE | 4 | 310 | | | 620 |
| FLASHER | | | | 0.50 | |
| TOTAL = | | | | | 1250 |

ENERGY COSTS TO: CITY OF BATAVIA
100 N. ISLAND AVENUE
BATAVIA, IL 60510

ENERGY SUPPLY: CONTACT: STEVE LUSTED
PHONE: (630) 879-1424
COMPANY: CITY OF BATAVIA

| FOUNDATION (DEPTH) | FT. (m) | CABLE SLACK | FT. (m) | VERTICAL | FT. (m) |
|--------------------|----------|------------------|-----------|-------------------|-------------|
| TYPE A - POST | 4 (1.2) | HANDHOLE | 6.5 (2.0) | ALL FOUNDATIONS | 3.5 (2.0) |
| D- CONTROLLER | 4 (1.2) | DOUBLE HANDHOLE | 13 (4.0) | MAST ARM (L) POLE | 20' HL-2= |
| E- M. ARM POLE | 2 (1.0) | SIGNAL POST | 2 (1.0) | | 6m HL-0.6m= |
| 24" (600mm) | 10 (3.0) | CONTROLLER CAB. | 1 (0.5) | BRACKET MOUNTED | 13 (4.0) |
| 30" (750mm) | 15 (4.6) | FIBER OPTIC | 13 (4.0) | PED. PUSHBUTTON | 4 (1.2) |
| 36" (900mm) | 15 (4.6) | ELECTRIC SERVICE | 1 (0.5) | ELECTRIC SERVICE | 13.5 (4.1) |
| | | GROUND CABLE | 1 (0.5) | SERVICE TO GROUND | 13.5 (4.1) |
| | | | | POST MOUNTED | 6 (1.8) |

| | | | |
|---|---------------------|------------------------|-----------|
| FILE NAME = | USER NAME = FPAIONE | DESIGNED - ABR | REVISED - |
| N:\kane\county\0806731\Traffic\0808_CAB_Fabyan Pkwy-Western.dgn | | DRAWN - FCP | REVISED - |
| PLOT SCALE = NOT TO SCALE | | CHECKED - MJT | REVISED - |
| PLOT DATE = 11/3/2010 | | DATE - AUGUST 31, 2010 | REVISED - |

STATE OF ILLINOIS DEPARTMENT OF TRANSPORTATION

| | | |
|--------|---------------------|--------------------|
| SCALE: | SHEET NO. OF SHEETS | STA. -- TO STA. -- |
|--------|---------------------|--------------------|

KANE COUNTY DIVISION OF TRANSPORTATION
CABLE PLAN, PHASE DESIGNATION DIAGRAM, EMERGENCY VEHICLE PREEMPTION SEQUENCE AND SCHEDULE OF QUANTITIES
FABYAN PARKWAY & WESTERN AVENUE
SCALE: NOT TO SCALE
DATE: 12/14/2007
DRAWN BY: CEC
DESIGNED BY: BRD/JSH
CHECKED BY: JJE

| | | | | |
|---------------------------|----------------|--------|--------------|--------------------|
| F.A.P. RTE. | SECTION | COUNTY | TOTAL SHEETS | SHEET NO. |
| 336 | 09-00237-02-TL | KANE | 100 | 58 |
| | | | | CONTRACT NO. 63525 |
| ILLINOIS FED. AID PROJECT | | | | |

SURVEYED BY: DATE: _____
 PLOTTED BY: DATE: _____
 CHECKED BY: DATE: _____
 NOTE BOOK NO.: _____
 FILE NAME: _____
 PROFILE SURVEYED BY: DATE: _____
 PLOTTED BY: DATE: _____
 CHECKED BY: DATE: _____
 NOTE BOOK NO.: _____
 FILE NAME: _____

CHRISTOPHER B. BURKE ENGINEERING LTD.
 9675 West Higgins Road, Suite 600
 Rosemont, Illinois 60018
 (847) 823-0500