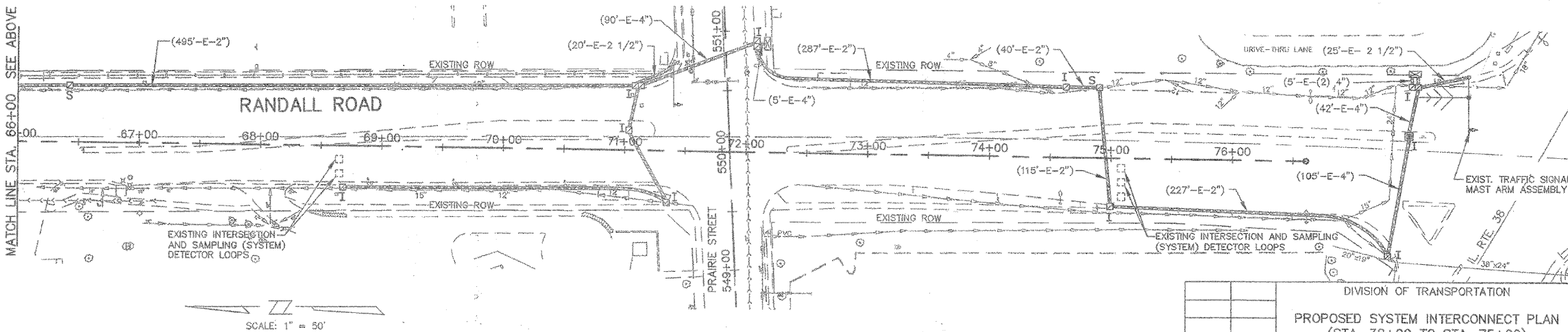
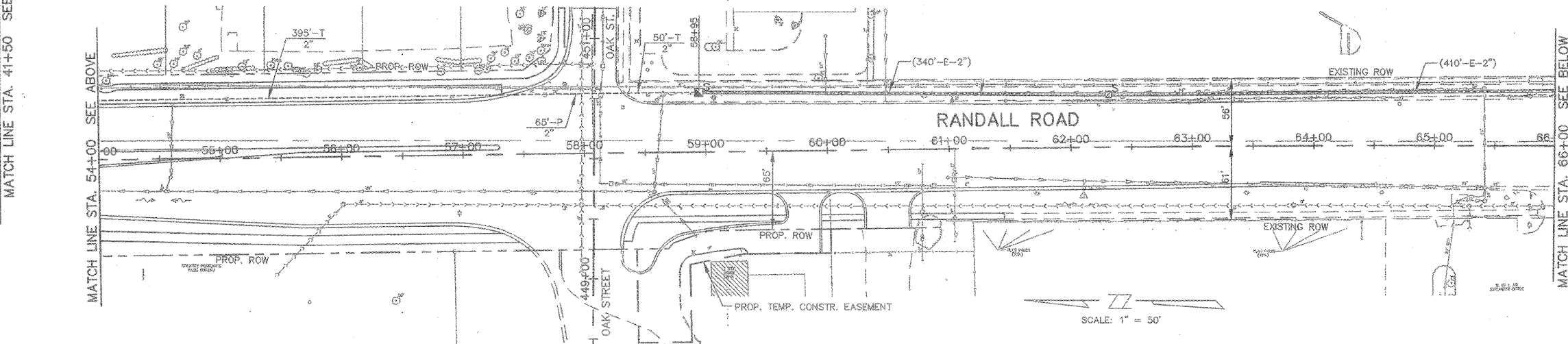
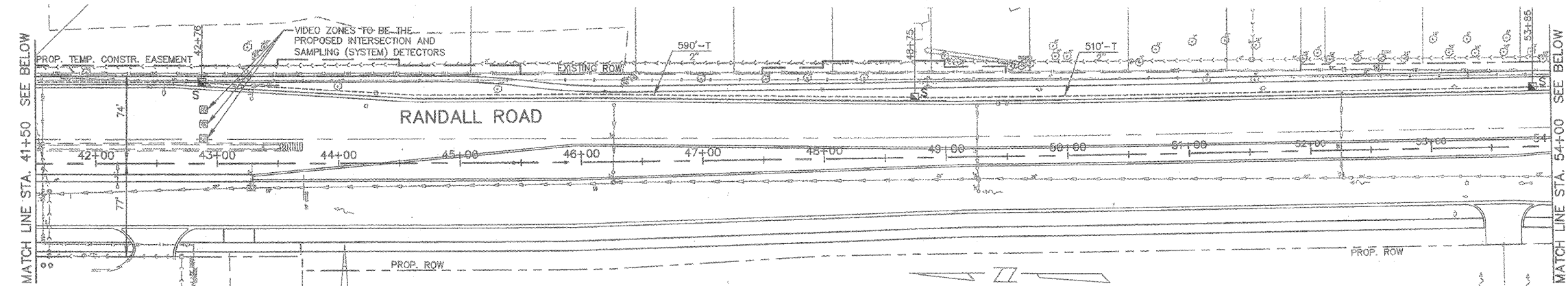
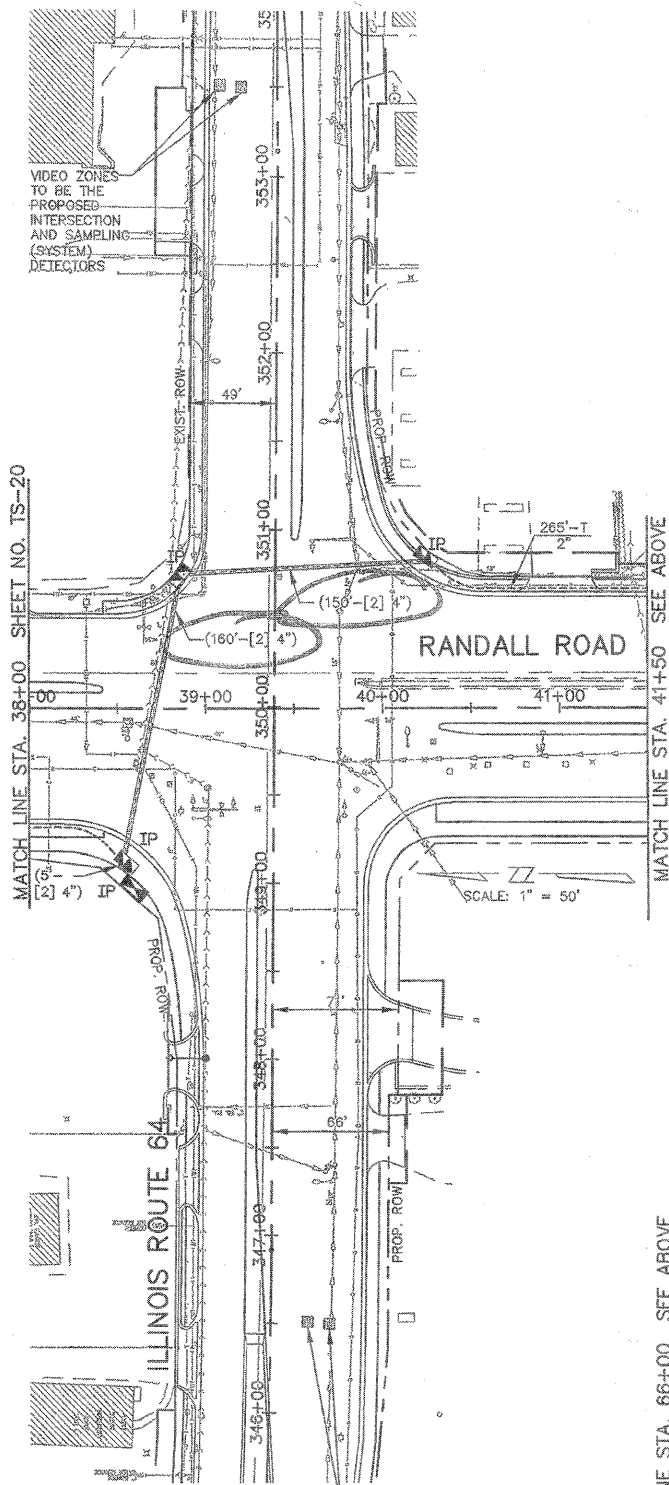


F.A.P. ROUTE	COUNTY SECTION	COUNTY	TOTAL SHEETS
336	09-00243-00-PV	KANE	268
CONTRACT NO. 83782			138
PROPOSED SYSTEM INTERCONNECT PLAN			
F.H.W.A. REG.5 ILLINOIS PROJECT F-0336(008)			

DATE	BY	DATE	BY
PLAN	SURVEYED	PROFILE	SURVEYED
	PLOTTED		PLOTTED
	CHECKED		CHECKED
	ALIGNED		ALIGNED
	NO. 1		NO. 1
	NO. 2		NO. 2
	NO. 3		NO. 3
	NO. 4		NO. 4
	NO. 5		NO. 5
	NO. 6		NO. 6
	NO. 7		NO. 7
	NO. 8		NO. 8
	NO. 9		NO. 9
	NO. 10		NO. 10

**CHRISTOPHER B. BURKE ENGINEERING LTD.**  
 9575 West Higgins Road, Suite 600  
 Rosemont, Illinois 60018  
 (847) 923-0500



**FOR INFORMATION ONLY**

DIVISION OF TRANSPORTATION	
PROPOSED SYSTEM INTERCONNECT PLAN (STA. 38+00 TO STA. 75+00)	
SHEET 2 OF 3	
RANDALL ROAD	
NAME	DATE
REVISIONS	
SCALE: 1" = 50'	DRAWN BY: JMH
DATE: SEPTEMBER 23, 2004	DESIGNED BY: DMH
	CHECKED BY: JRT

FILE NAME =	USER NAME = FPAIONE	DESIGNED - ABR	REVISED -
N:\kane\county\080673\Traffic\068_INT-10_Randall.dgn		DRAWN - FCP	REVISED -
PLOT SCALE = NOT TO SCALE		CHECKED - MJT	REVISED -
PLOT DATE = 11/3/2010		DATE - AUGUST 31, 2010	REVISED -

**STATE OF ILLINOIS  
 DEPARTMENT OF TRANSPORTATION**

**INTERCONNECT PLAN  
 RANDALL ROAD**

SCALE: SHEET NO. OF SHEETS STA. -- TO STA. --

F.A.P. RTE.	SECTION	COUNTY	TOTAL SHEETS
336	09-00237-02-TL	KANE	100
			68
CONTRACT NO. 63525			
ILLINOIS FED. AID PROJECT			