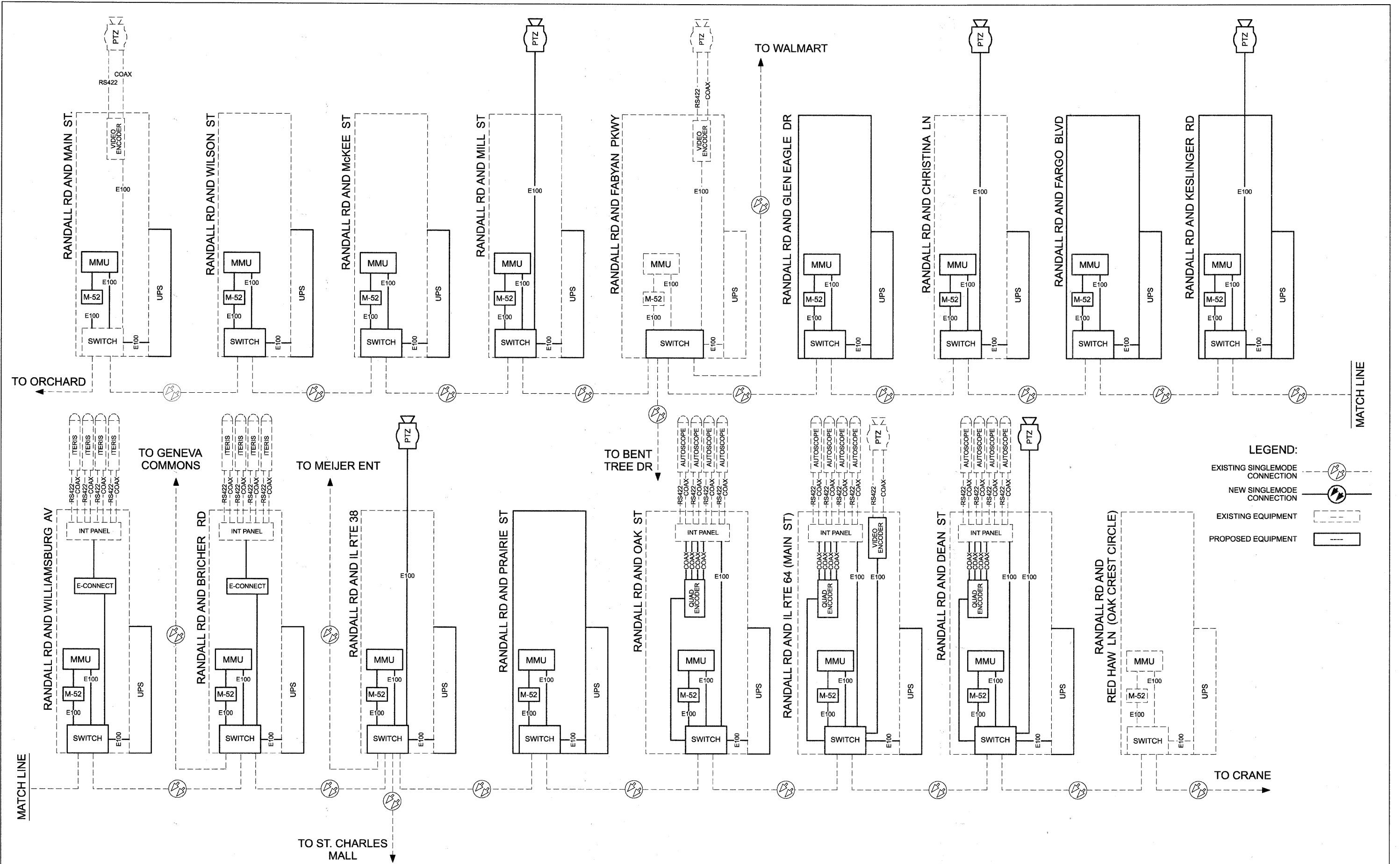


PROFILE	SURVEYED	DATE	BY
NOTE BOOK	PLANNED		
NO.	NO.		
	STRUCTURE NOTATIONS		

PLAN	SUBMITTED	DATE	BY
NO.	PLOTTED		
	ALIGNMENT CHECKED		
	PAGE FILE NAME		

CHRISTOPHER B. BURKE ENGINEERING LTD.	9875 West Higgins Road, Suite 600	Rosemont, Illinois 60018	(847) 823-0500
---------------------------------------	-----------------------------------	--------------------------	----------------



LEGEND:

- EXISTING SINGLEMODE CONNECTION:
- NEW SINGLEMODE CONNECTION:
- EXISTING EQUIPMENT:
- PROPOSED EQUIPMENT:

FILE NAME =	USER NAME = FPACIONE	DESIGNED - ABR	REVISED -
N:\kane\county\082673\Traffic\092_DET_14 Cabinet Detail.dgn		DRAWN - FCP / FPB	REVISED -
PLOT SCALE = NOT TO SCALE	CHECKED - MJT	DATE - AUGUST 31, 2010	REVISED -
PLOT DATE = 11/3/2010			

**STATE OF ILLINOIS
DEPARTMENT OF TRANSPORTATION**

CABINET DETAIL

F.A.P. RTE.	SECTION	COUNTY	TOTAL SHEETS	SHEET NO.
336	09-00237-02-TL	KANE	100	92
CONTRACT NO. 63525				

SCALE: SHEET NO. OF SHEETS STA. -- TO STA. --

ILLINOIS FED. AID PROJECT