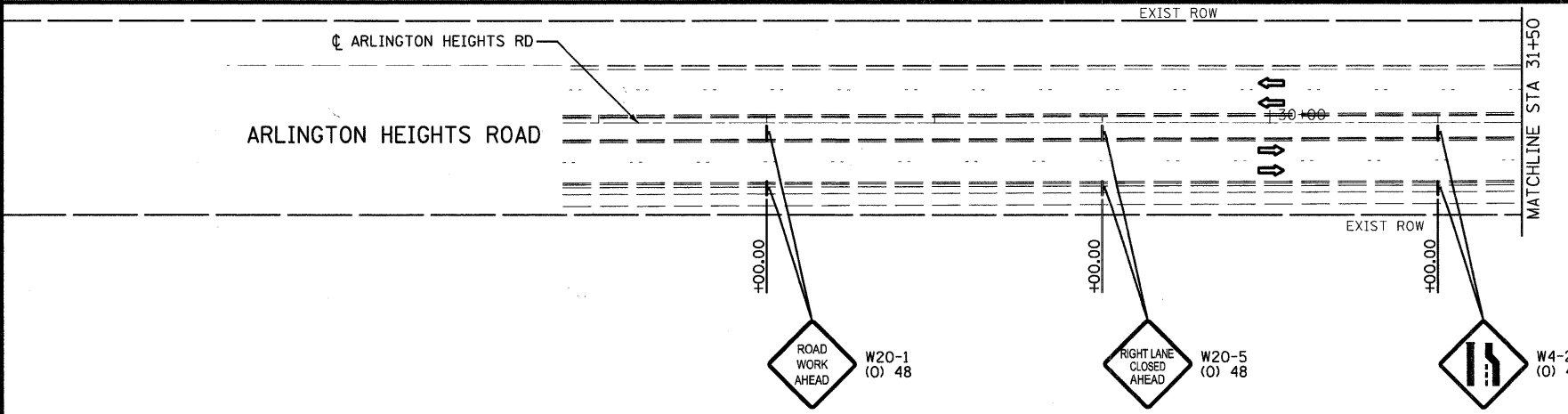
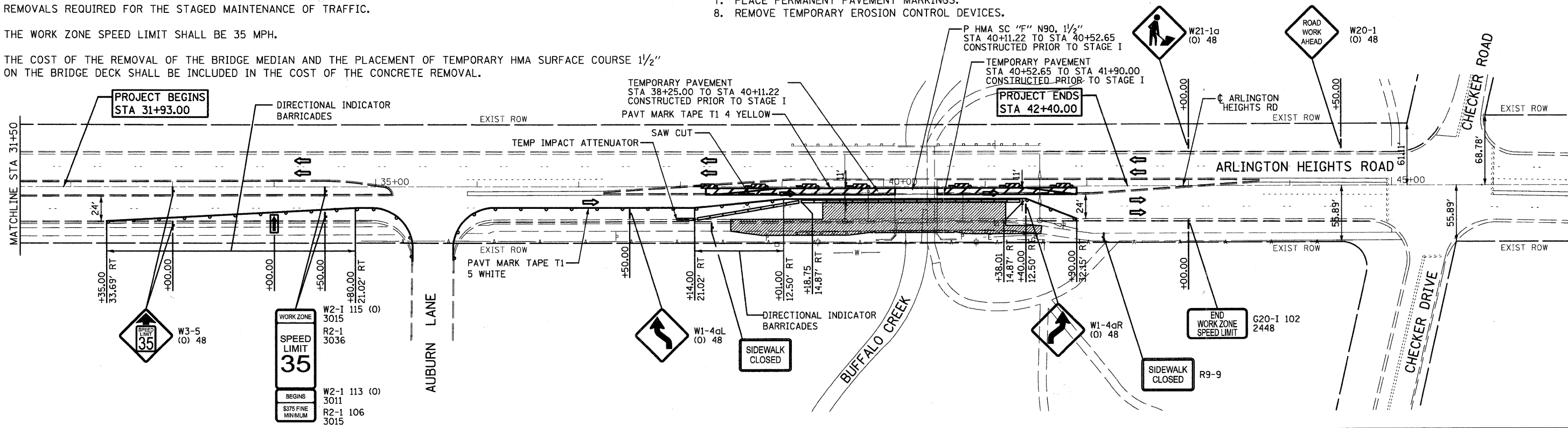
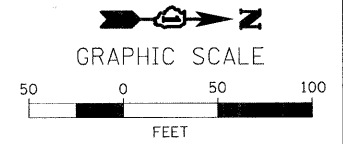


**MAINTENANCE OF TRAFFIC GENERAL NOTES**

1. TRAFFIC CONTROL FOR STAGES I & II WILL BE PAID FOR AS A LUMP SUM, "TRAFFIC CONTROL AND PROTECTION, (SPECIAL)".
2. TRAFFIC CONDITIONS, ACCIDENTS, AND OTHER UNFORESEEN EMERGENCY CONDITIONS MAY REQUIRE THE ENGINEER TO RESTRICT, MODIFY OR REMOVE LANE CLOSURES OR CHANNELIZATION SHOWN IN THE PLANS. THE CONTRACTOR SHALL RESPOND PROMPTLY TO THE TIME OF NOTIFICATION BY THE ENGINEER FOR THE MAINTENANCE OF TRAFFIC CONTROL DEVICES.
3. SIDE STREETS SHALL REMAIN OPEN AT ALL TIMES. SPECIAL CONSIDERATION MAY BE GIVEN TO A SHORT TERM CLOSURE ON AS-NEEDED BASIS. THESE CLOSURES WILL BE COORDINATED WITH THE RESIDENT ENGINEER.
4. ALL COUNTY OWNED UTILITY STRUCTURES SHALL BE KEPT ACCESSIBLE AT ALL TIMES DURING CONSTRUCTION. STRUCTURES SHALL BE ADJUSTED TO MATCH THE TEMPORARY PAVEMENT AND GRADING ELEVATION. ALL TEMPORARY ADJUSTMENTS TO STRUCTURES REQUIRED AS A RESULT OF THE STAGED MAINTENANCE OF TRAFFIC WILL NOT BE PAID FOR, BUT SHALL BE CONSIDERED INCLUDED IN THE COST OF THE FINAL ADJUSTMENT ITEM.
5. EXCAVATION REQUIRED TO CONSTRUCT THE TEMPORARY PAVEMENT IN STAGE I SHALL BE MEASURED FOR PAYMENT AND SHALL BE PAID FOR AS "EARTH EXCAVATION". QUANTITIES FOR THIS WORK HAVE BEEN INCLUDED IN THE EARTHWORK ITEM FOR THE STAGE.
6. ALL OBSTRUCTIONS SHALL BE REMOVED PRIOR TO CONSTRUCTING THE TEMPORARY PAVEMENT AND SHIFTING TRAFFIC TO IT. REMOVALS SHALL BE DETAILED ON THE REMOVAL SHEET. REMOVAL SHALL BE PAID FOR ONCE AND SHALL BE PAID FOR AS INDICATED ON THE REMOVAL SHEET. THERE WILL BE NO ADDITIONAL COMPENSATION FOR PARTIAL REMOVALS REQUIRED FOR THE STAGED MAINTENANCE OF TRAFFIC.
7. THE WORK ZONE SPEED LIMIT SHALL BE 35 MPH.
8. THE COST OF THE REMOVAL OF THE BRIDGE MEDIAN AND THE PLACEMENT OF TEMPORARY HMA SURFACE COURSE 1 1/2" ON THE BRIDGE DECK SHALL BE INCLUDED IN THE COST OF THE CONCRETE REMOVAL.

**SEQUENCE OF CONSTRUCTION**

- STAGE I**
1. INSTALL EROSION CONTROL DEVICES USING STANDARD 701101.
  2. INSTALL TRAFFIC CONTROL DEVICES ALONG THE WEST SIDE OF THE ROADWAY. REMOVE ALL CONFLICTING EXISTING PAVEMENT MARKINGS AND SIGN USING COUNTY STANDARD LC7002.
  3. REMOVE CURB AND GUTTER AND BRIDGE MEDIAN USING COUNTY STANDARD LC7002.
  4. CONSTRUCT TEMPORARY PAVEMENT FROM STA 38+25.00 TO STA. 41+90.00 USING COUNTY STANDARD LC7002.
  5. INSTALL BIKEWAY DETOUR PLAN AS SHOWN ON SHEET 11.
  6. INSTALL STAGE I TRAFFIC CONTROL.
  7. SHIFT TRAFFIC TO WEST SIDE OF ROADWAY TO UTILIZE THE EXISTING AND TEMPORARY PAVEMENT.
  8. REMOVE THE EXISTING CURB AND GUTTER AND THE BIKEWAY ON THE EAST SIDE.
  9. CONSTRUCT THE APPROACH SLAB, BRIDGE DECK BEAMS, AND PARAPET.
- STAGE II**
1. MAINTAIN BIKEWAY DETOUR FOR TRAIL UNDERNEATH BRIDGE AS SHOWN ON SHEET 11. REMOVE ALL CONFLICTING EXISTING PAVEMENT MARKINGS AND SIGNS. INSTALL STAGE II TRAFFIC CONTROL PLAN.
  2. REMOVE TEMPORARY PAVEMENT ON THE WEST SIDE OF THE ROAD CONSTRUCTED IN STAGE I.
  3. SHIFT TRAFFIC TO THE EAST SIDE TO UTILIZE THE EXISTING PAVEMENT AND BRIDGE DECK BEAMS CONSTRUCTED IN STAGE I.
  4. PRIOR TO REMOVAL OF THE EXISTING BRIDGE DECK BEAMS ON THE WEST SIDE INSTALL TEMPORARY CONCRETE BARRIER ALONG THE SOUTHBOUND BRIDGE DECK.
  5. CONSTRUCT THE APPROACH SLAB, BRIDGE DECK BEAMS, AND CURB AND GUTTER AND RESTORE THE MEDIAN ON THE WEST SIDE.
  6. REMOVE BIKEWAY DETOUR PLAN.
  7. PLACE PERMANENT PAVEMENT MARKINGS.
  8. REMOVE TEMPORARY EROSION CONTROL DEVICES.



- LEGEND**
- CONSTRUCTION ZONE
  - TEMPORARY HMA PAVEMENT  
TEMPORARY PAVEMENT (HMA BINDER IL-19MM), 6"  
TEMPORARY AGGREGATE BASE COURSE, TYPE B, 4"
  - TEMPORARY CONCRETE BARRIER
  - TEMPORARY IMPACT ATTENUATOR
  - VERTICAL SIGN PANELS (GROUND MOUNTED)
  - BARRICADE TYPE II WITH MONO DIRECTIONAL STEADY BURNING LIGHT
  - FLASHING ARROW BOARD

FILE NAME = LC0907-sht-staging-1.dgn	USER NAME = 32020007	DESIGNED - TC	REVISED -	<b>STATE OF ILLINOIS DEPARTMENT OF TRANSPORTATION</b>	<b>MAINTENANCE OF TRAFFIC PLAN STAGE I STA. 38+14.00 TO STA 41+90.00</b>	F.A.U. RTE. 2626	SECTION 05-00193-04-BR	COUNTY LAKE	TOTAL SHEETS 36	SHEET NO. 10		
PLOT SCALE = 100.0000' / IN.	CHECKED - MRH	DATE - 10/25/2010	REVISED -			SCALE: 1" = 50'	SHEET NO. 1 OF 1 SHEETS	STA. 38+14.00	TO STA. 41+90.00	CONTRACT NO. 63531		
PLOT DATE = 10/25/2010	DATE - 10/25/2010	REVISED -	REVISED -			FED. ROAD DIST. NO. 1 ILLINOIS FED. AID PROJECT						