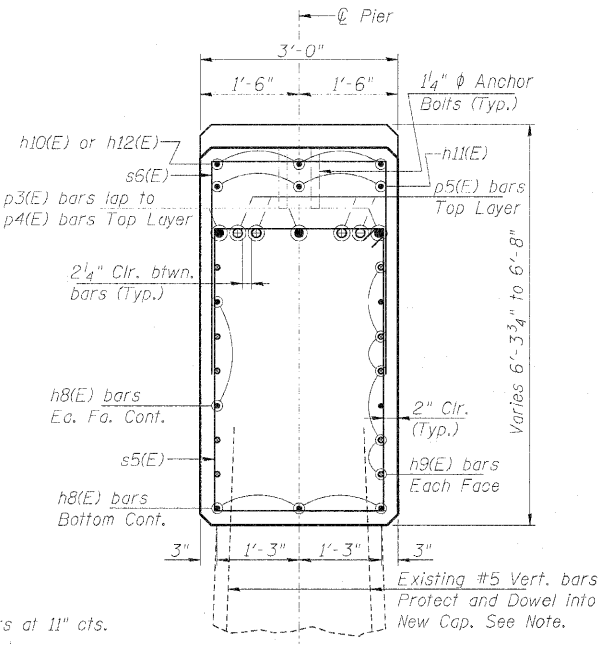
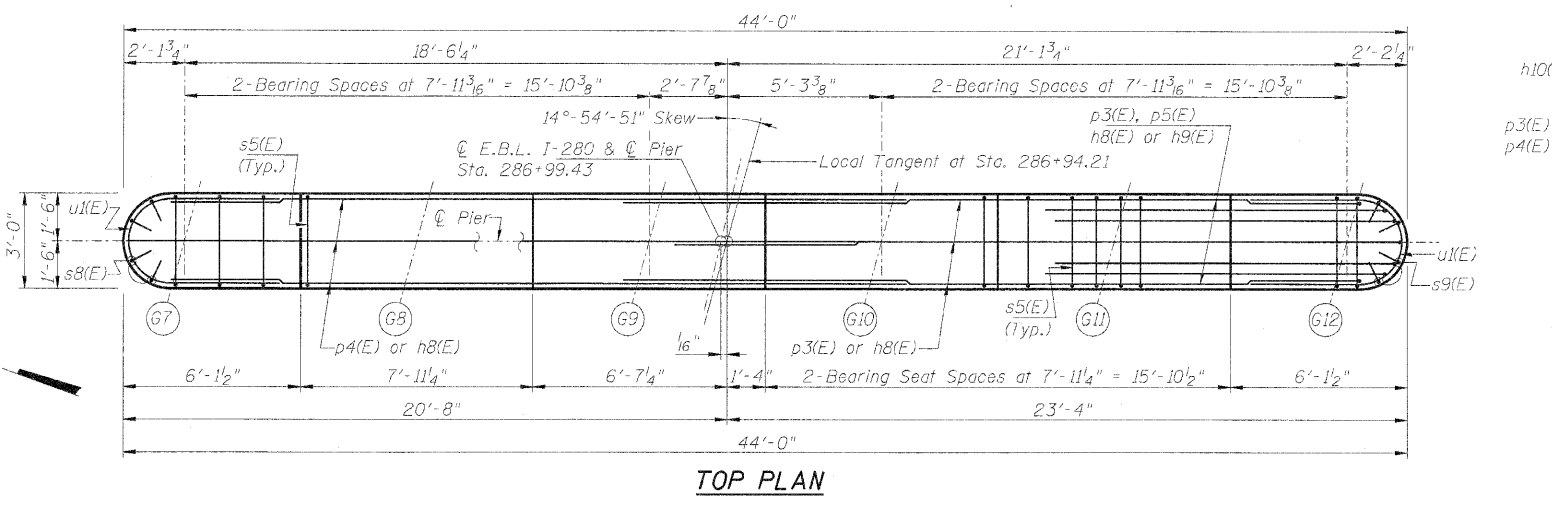
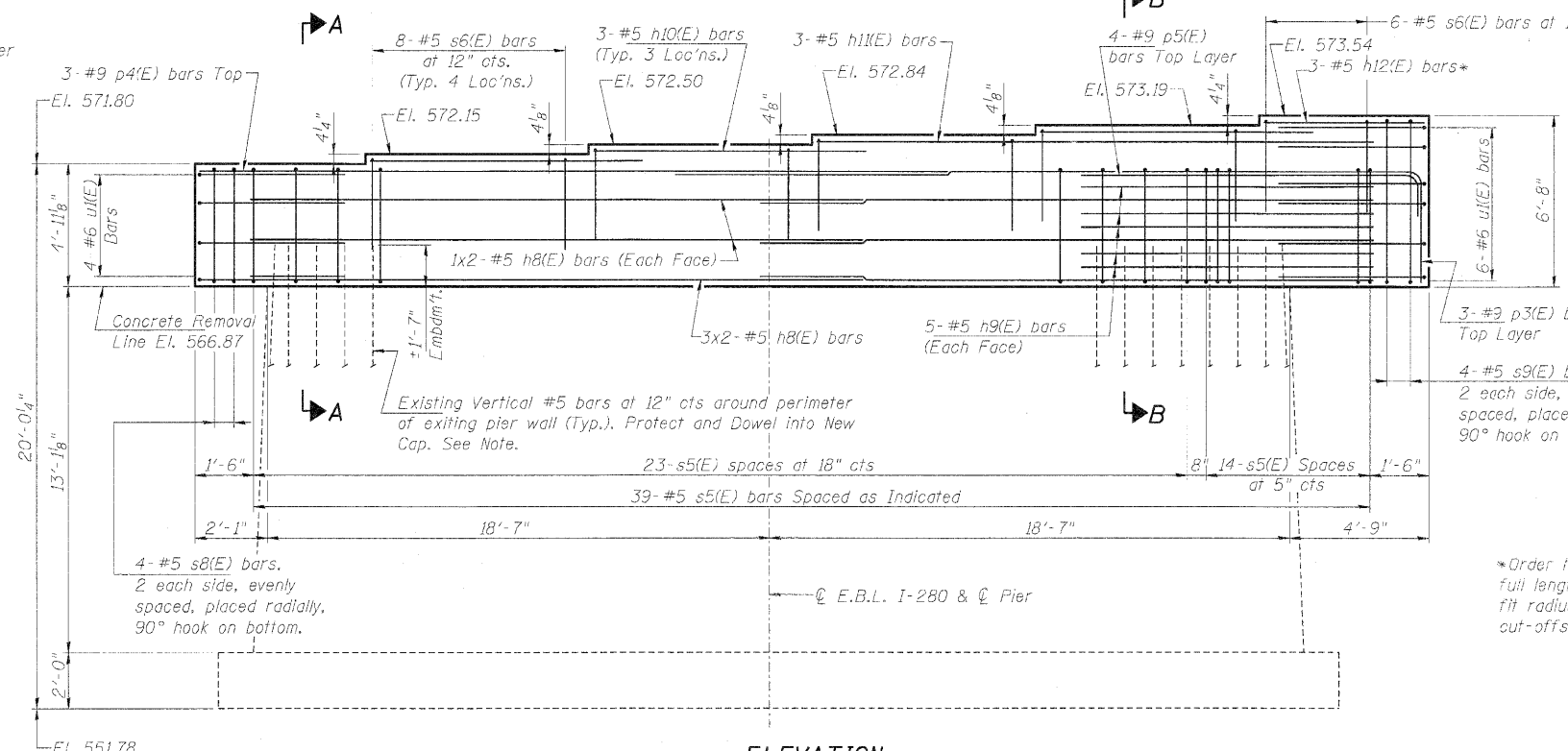
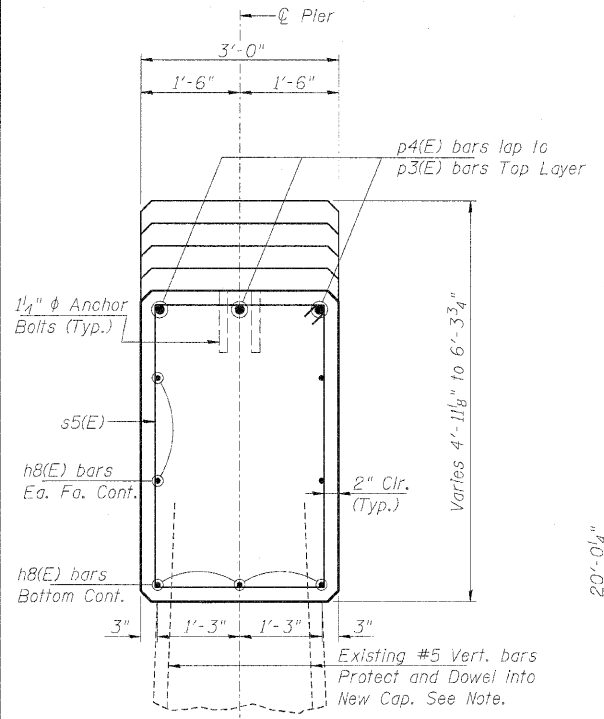
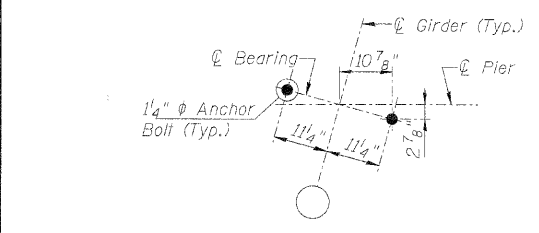


STATE OF ILLINOIS  
DEPARTMENT OF TRANSPORTATION

Notes:  
Space reinforcement in cap to miss anchor bolts.  
Four steps monolithically with cap.



ANCHOR BOLT LAYOUT  
(Typical all Girder Locations)

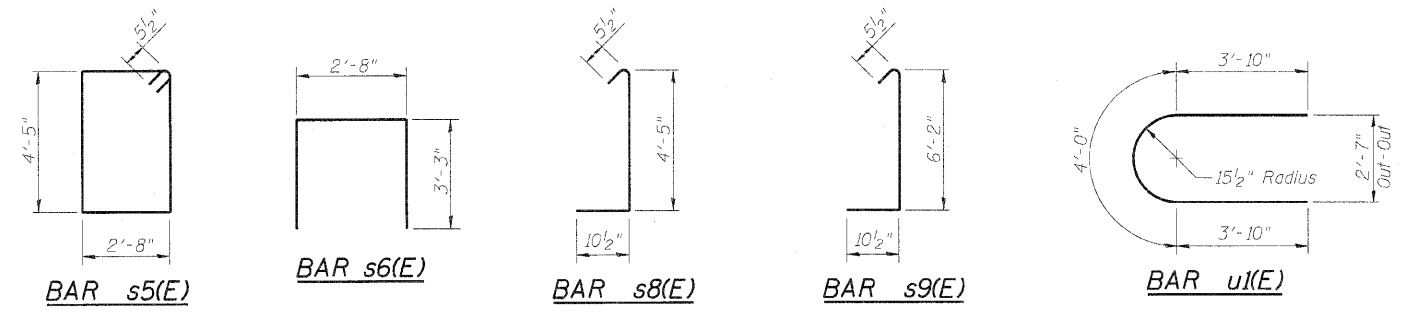


MINIMUM BAR LAP  
#5 bar = 3'-3"  
#6 bar = 3'-10"  
#9 bar = 9'-8"

BILL OF MATERIAL - PIER - E.B.L.

Bar No.	Size	Length	Shape
h8(E)	14 #5	22'-2"	—
h9(E)	10 #5	10'-9"	—
h10(E)	9 #5	9'-9"	—
h11(E)	3 #5	20'-5"	—
h12(E)	3 #5	5'-9"	—
p3(E)	3 #9	30'-11"	L
p4(E)	3 #9	26'-7"	L
p5(E)	4 #9	13'-4"	L
s5(E)	39 #5	15'-1"	U
s6(E)	38 #5	9'-2"	L
s8(E)	4 #5	5'-9"	J
s9(E)	4 #5	7'-6"	J
u(E)	10 #6	11'-8"	U
Concrete Structures	Cu. Yd.	27.9	
Reinforcement Bars, Epoxy Coated	Pound	2580	

Bars indicated thus 1 x 2-#5 etc. indicates 1 line of bars with 2 lengths per line.  
Existing reinforcement shall be cleaned and incorporated into the new construction. Cost included with Concrete removal.  
Bars damaged or not salvaged shall be replaced with either drilled and epoxy grouted bars or IDOT approved mechanical splicers of the same size as directed by the Engineer. No additional compensation will be allowed for either method.



PROFESSIONAL DESIGN FIRM LICENSE #184-001084

© Copyright Hanson Professional Services Inc. 2010  
**HANSON**  
Hanson Professional Services Inc.

PIER - E.B.L.  
STRUCTURE NUMBERS 081-0026 (E.B.) & 081-0027 (W.B.)

F.A. RTE.	SECTION	COUNTY	TOTAL SHEETS	SHEET NO.
280	81-11B-11R	Rock Island	503	446
		CONTRACT NO. 64815		
ILLINOIS FED. AID PROJECT				

LAYOUT 5/21/10  
DRAWN 5/21/10  
REVIEWED MMW/CEH 5/21/10