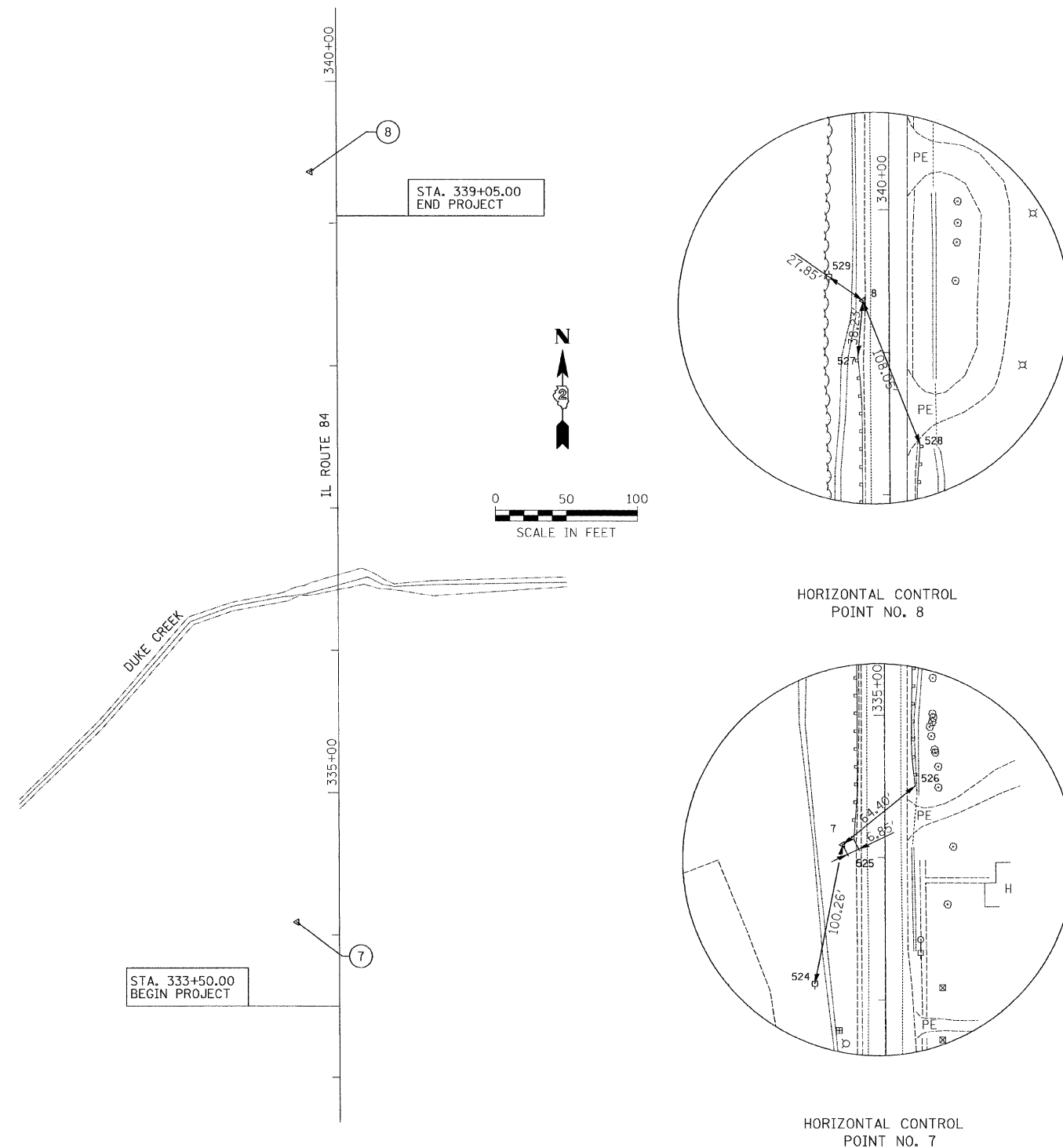


# EXISTING HORIZONTAL & VERTICAL CONTROL



Chain JO\_IL84\_N contains:  
1293 1282

Beginning chain JO\_IL84\_N description

Point 1293 N 2,037,772.0405 E 2,264,444.1770 Sta 330+95.7445

Course from 1293 to 1282 359° 46' 18.9603" Dist 8,654.3518

Point 1282 N 2,046,426.3237 E 2,264,409.7283 Sta 417+50.0963

Ending chain JO\_IL84\_N description

## BENCH MARK

POINT	NORTH	EAST	ELEVATION	CHAIN	STATION	OFFSET	DESCRIPTION
407	2038310.0771	2264424.9274	629.5858	JO_IL84_N	336+33.86	17.11 LT	TOP OF ABUTMENT AT DUKE CREEK

## HORIZONTAL CONTROL POINTS

POINT	NORTH	EAST	ELEVATION	CHAIN	STATION	OFFSET	DESCRIPTION
7	2038085.8602	2264413.0916	627.7504	JO_IL84_N	334+09.69	29.84 LT	SET PIN & CAP FOR WORK POINT TOPO SURVEY POINT
8	2038612.9322	2264422.2874	631.4107	JO_IL84_N	339+36.72	18.54 LT	SET PIN & CAP FOR WORK POINT TOPO SURVEY POINT

## REFERENCE TIES

POINT	NORTH	EAST	ELEVATION	CHAIN	STATION	OFFSET	DESCRIPTION
524	2037987.5290	2264393.5009	627.0952	JO_IL84_N	333+11.43	49.82 LT	POWER POLE
525	2038087.4003	2264419.7693	628.6965	JO_IL84_N	334+11.20	23.15 LT	STEEL PLATE BEAM GUARDRAIL
526	2038125.0815	2264464.1673	628.9473	JO_IL84_N	334+48.70	21.40 RT	STEEL PLATE BEAM GUARDRAIL
527	2038574.9105	2264418.3278	630.4315	JO_IL84_N	338+98.71	22.65 LT	STEEL PLATE BEAM GUARDRAIL
528	2038512.7474	2264462.7601	630.0320	JO_IL84_N	338+36.37	21.53 RT	STEEL PLATE BEAM GUARDRAIL
529	2038628.1970	2264398.9933	631.3818	JO_IL84_N	339+52.07	41.78 LT	POWER POLE