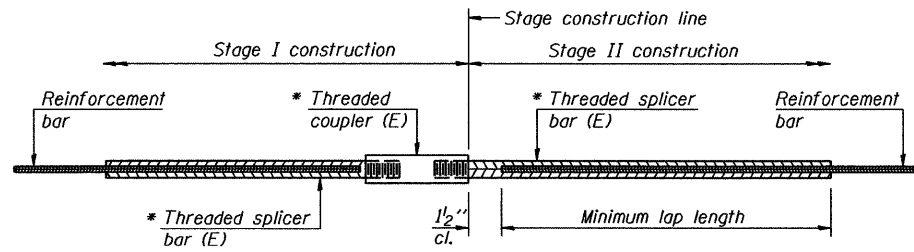


STATE OF ILLINOIS
DEPARTMENT OF TRANSPORTATION



STANDARD BAR SPLICER ASSEMBLY

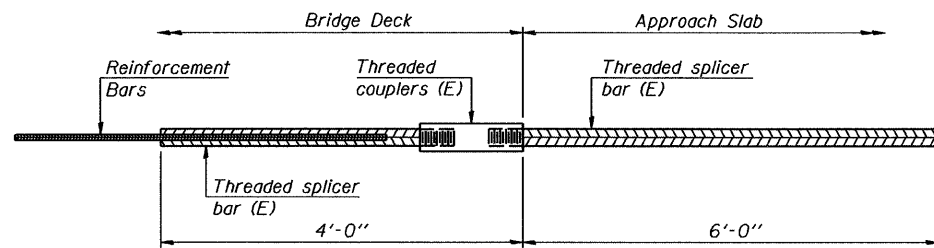
Minimum Lap Lengths						
Bar size to be spliced	Table 1	Table 2	Table 3	Table 4	Table 5	Table 6
3, 4	1'-5"	1'-11"	2'-1"	2'-4"	2'-7"	2'-11"
5	1'-9"	2'-5"	2'-7"	2'-11"	3'-3"	3'-8"
6	2'-1"	2'-11"	3'-1"	3'-6"	3'-10"	4'-5"
7	2'-9"	3'-10"	4'-2"	4'-8"	5'-2"	5'-10"
8	3'-8"	5'-1"	5'-5"	6'-2"	6'-9"	7'-8"
11	7'-2"	10'-0"	10'-8"	12'-1"	13'-4"	15'-1"

- Table 1: Black bar, 0.8 Class C
- Table 2: Black bar, Top bar lap, 0.8 Class C
- Table 3: Epoxy bar, 0.8 Class C
- Table 4: Epoxy bar, Top bar lap, 0.8 Class C
- Table 5: Epoxy bar, Class C
- Table 6: Epoxy bar, Top bar lap, Class C

Threaded splicer bar length = min. lap length + 1 1/2" + thread length

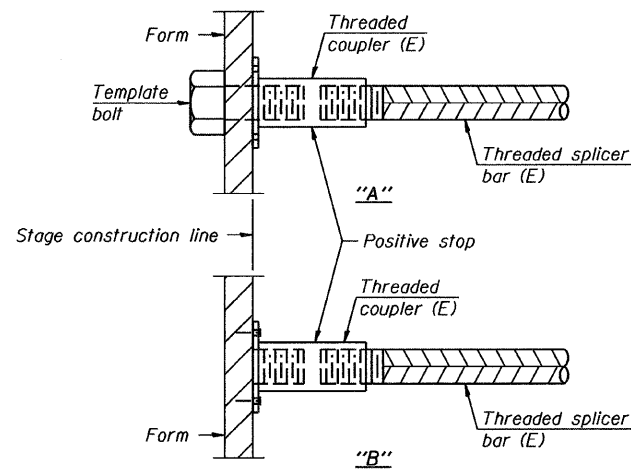
* Epoxy not required on Bar Splicer Assembly components used in conjunction with black bars.

Location	Bar size	No. assemblies required	Table for minimum lap length
Deck	#5	399	3
Diaphragms	#6	16	6
Approach Slabs	#4	50	4
Approach Slabs	#5	172	3
Abutments	#5	8	6
Abutments	#7	16	6
Piers	#5	80	6
Piers	#7	8	6
Piers	#11	4	6



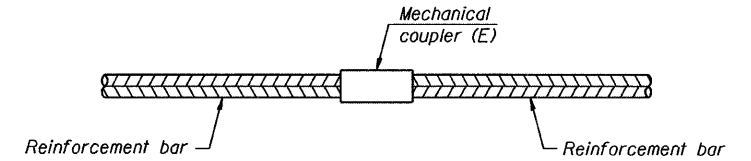
BAR SPLICER ASSEMBLY FOR #5 BAR ON INTEGRAL OR SEMI-INTEGRAL ABUTMENTS

No. required = 76



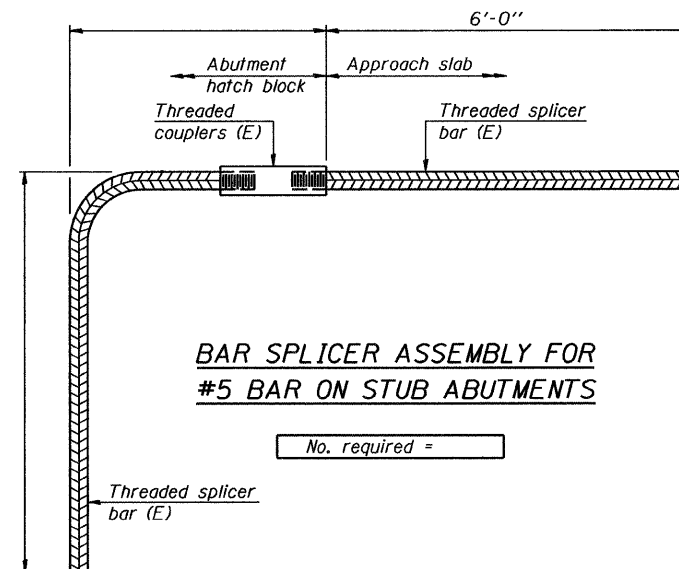
INSTALLATION AND SETTING METHODS

- "A" : Set bar splicer assembly by means of a template bolt.
- "B" : Set bar splicer assembly by nailing to wood forms or cementing to steel forms.
- (E) : Indicates epoxy coating.



STANDARD MECHANICAL SPLICER

Location	Bar size	No. assemblies required



BAR SPLICER ASSEMBLY FOR #5 BAR ON STUB ABUTMENTS

No. required =

NOTES

- Splicer bars shall be deformed with threaded ends and have a minimum 60 ksi yield strength.
- All reinforcement shall be lapped and tied to the splicer bars.
- Bar splicer assemblies shall be epoxy coated according to the requirements for reinforcement bars. See Section 508 of the Standard Specifications.
- See special provision for Mechanical Splicers.
- See approved list of bar splicer assemblies and mechanical splicers for alternatives.

H:\projects\2010\10103011\road\structure\1.dgn\BB\SA20\BAR_SPLICERS.dgn
 10/17/2010

DESIGNED J.Z.
 CHECKED E.E.J.
 DRAWN R.B.H.
 CHECKED J.Z.

GRÄEF 8501 W. Higgins Road, Suite 280
 Chicago, Illinois 60631
 (773) 399-0112

BAR SPLICER ASSEMBLY DETAILS					
Illinois Rte. 84 Over Apple River Tributary					
STATION 165+50.00			STRUCTURE NO. 043-0078		
SHEET NO.	F.A.P. RTE.	SECTION	COUNTY	TOTAL SHEETS	SHEET NO.
SA20 OF 25 SHEETS	308	104BR-1	JO DAVIESS	126	56
			CONTRACT NO. 64B26		
10-15-2010		ILLINOIS FED. AID PROJECT			