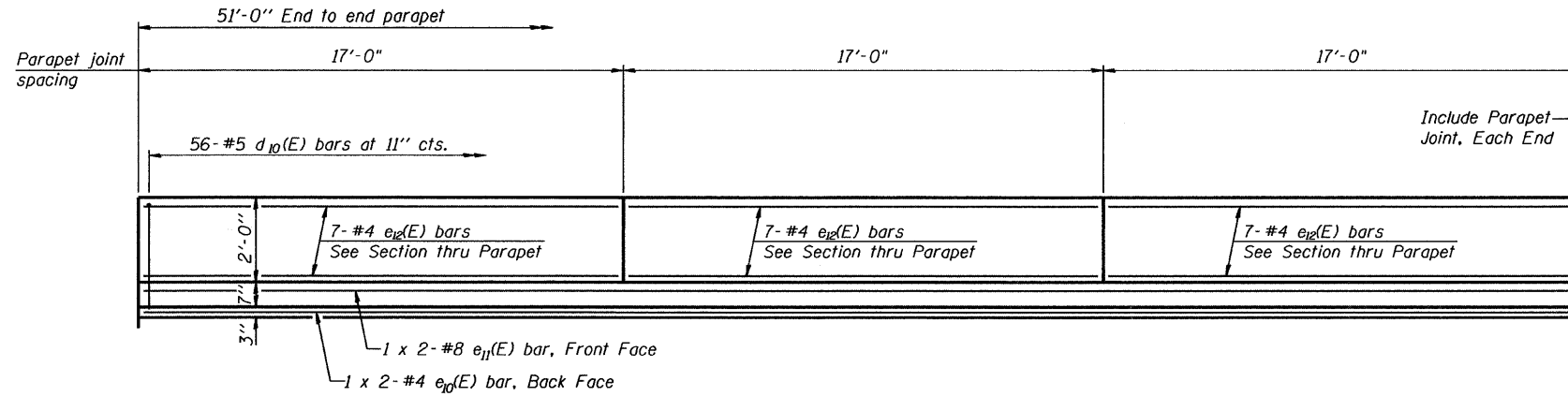
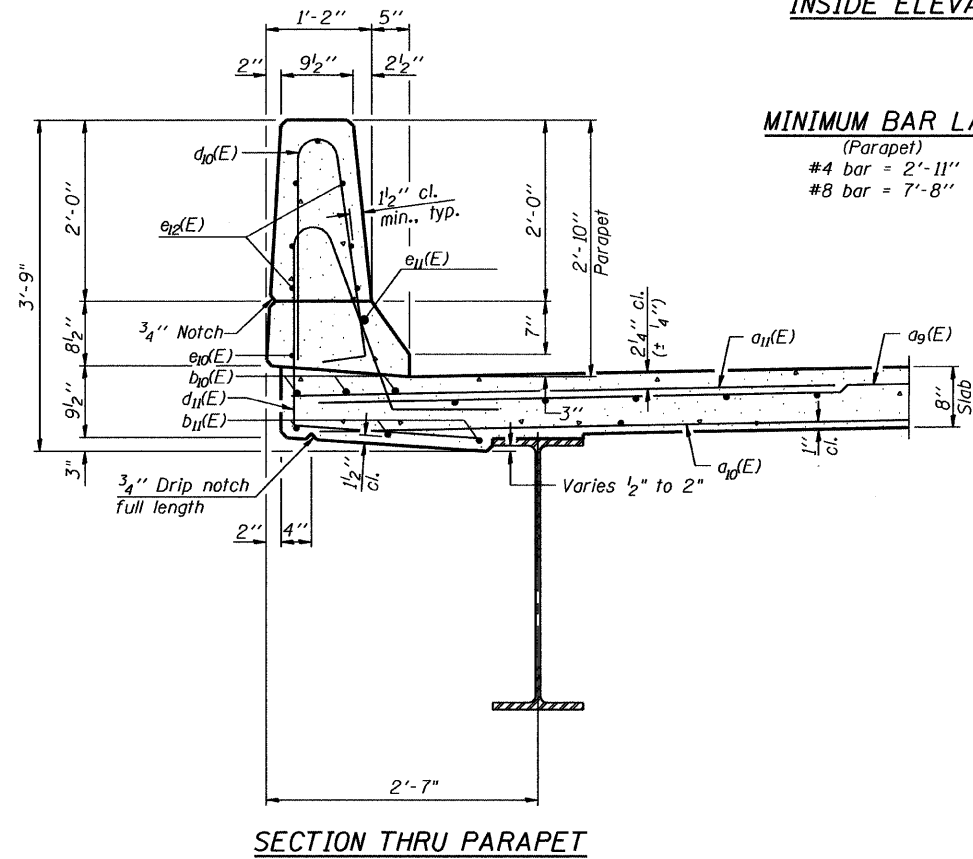


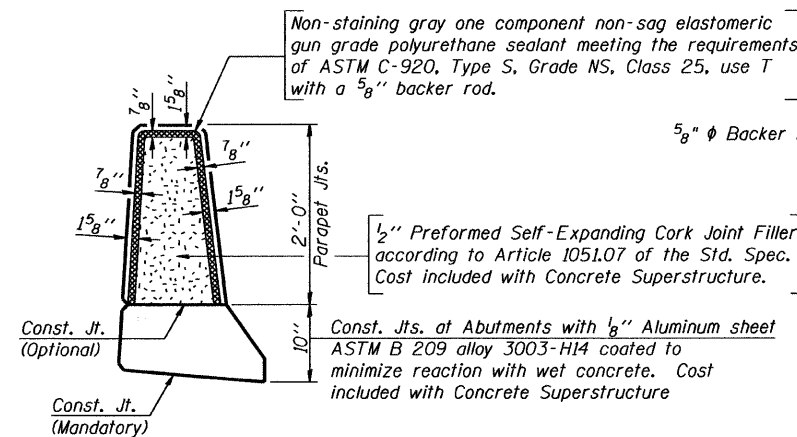
STATE OF ILLINOIS  
DEPARTMENT OF TRANSPORTATION



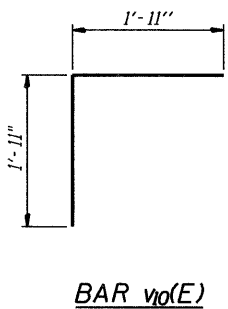
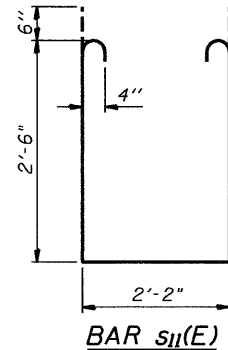
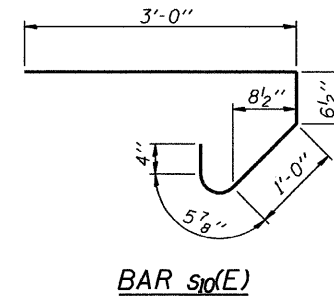
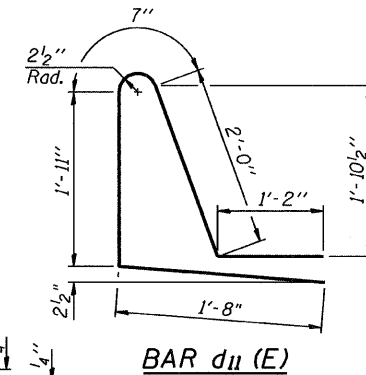
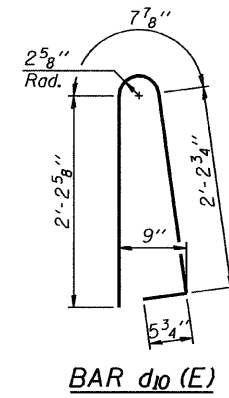
INSIDE ELEVATION OF PARAPET



SECTION THRU PARAPET



PARAPET JOINT DETAILS



SUPERSTRUCTURE  
BILL OF MATERIAL

Bar	No.	Size	Length	Shape
$a_9(E)$	176	#5	17'-3"	—
$a_{10}(E)$	124	#5	17'-0"	—
$a_{11}(E)$	176	#6	6'-6"	—
$b_{10}(E)$	76	#5	26'-8"	—
$b_{11}(E)$	108	#5	18'-8"	—
$d_{10}(E)$	112	#5	5'-7"	U
$d_{11}(E)$	112	#5	7'-4"	U
$e_{10}(E)$	4	#4	26'-10"	—
$e_{11}(E)$	4	#8	29'-2"	—
$e_{12}(E)$	42	#4	16'-8"	—
$m_{10}(E)$	20	#6	17'-5"	—
$m_{11}(E)$	24	#6	8'-9"	—
$m_{12}(E)$	8	#6	5'-8"	—
$m_{13}(E)$	4	#6	2'-3"	—
$m_{14}(E)$	4	#6	2'-8"	—
$s_{10}(E)$	72	#5	5'-5"	U
$s_{11}(E)$	72	#4	8'-2"	U
$v_{10}(E)$	72	#5	3'-10"	T
Concrete Superstructure		Cu. Yds.	78.3	
Bridge Deck Grooving		Sq. Yd	170	
Protective Coat		Sq. Yd.	224	
Reinforcement Bars, Epoxy Coated		Pound	15,690	
Bar Splicers		Each	242	

Bars indicated thus 1 x 2- #5 etc. indicates 1 line of bars with 2 lengths per line.

PARAPET & DECK DETAILS  
Illinois Rte. 84 Over Duke Creek  
STATION 336+42.00 STRUCTURE NO. 043-0079

SHEET NO.	F.A.P. RTE.	SECTION	COUNTY	TOTAL SHEETS	SHEET NO.
SB10 OF 23 SHEETS	308	103BR-3	JO DAVIESS	126	71
				CONTRACT NO. 64B26	
10-15-2010		ILLINOIS FED. AID PROJECT			

GRAEF 8501 W. Higgins Road, Suite 280  
Chicago, Illinois 60631  
(773) 399-0112

H:\sb10\2010\2010\3081\road\structure\1\sgn\80\SB10\_SUPER\_DETAIL.dgn  
 10/12/2010

DESIGNED	J.Z.
CHECKED	E.E.J.
DRAWN	R.B.H.
CHECKED	J.Z.