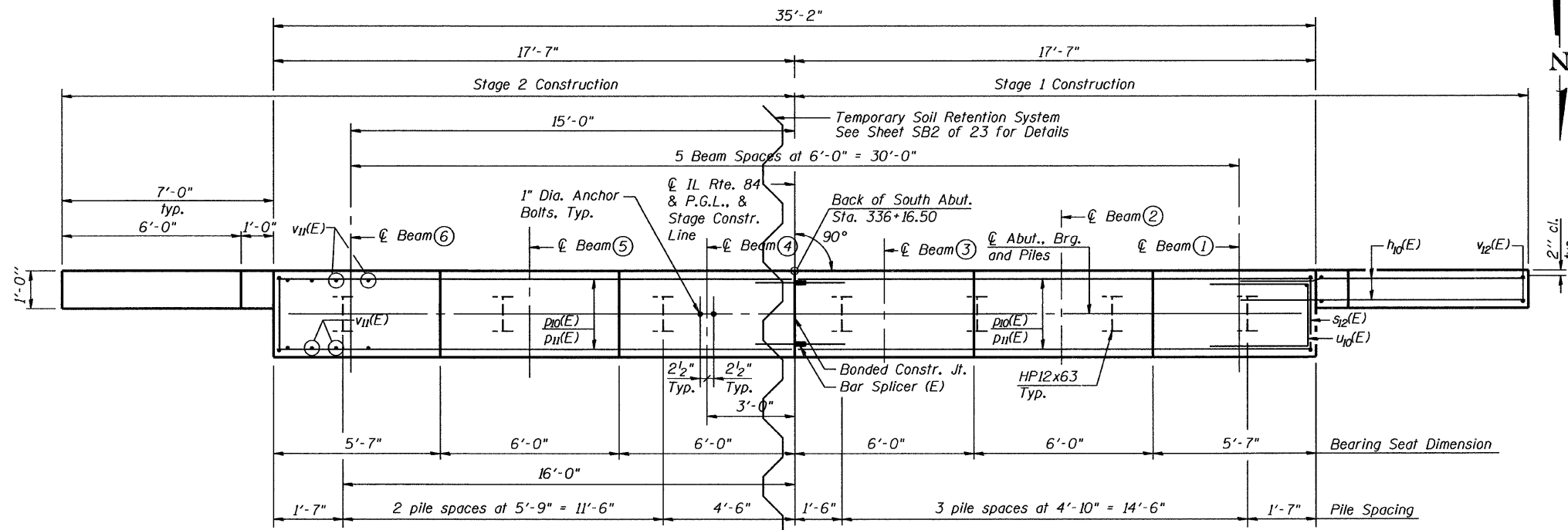
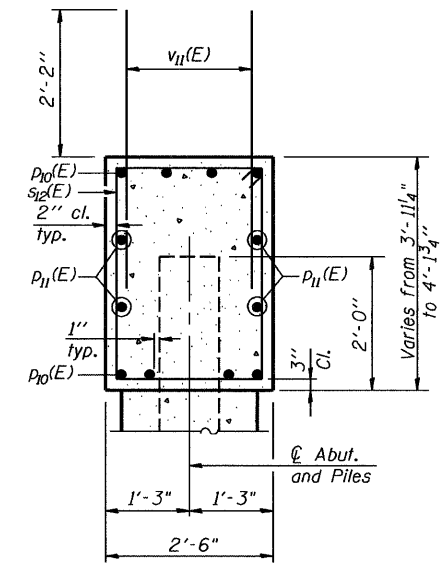
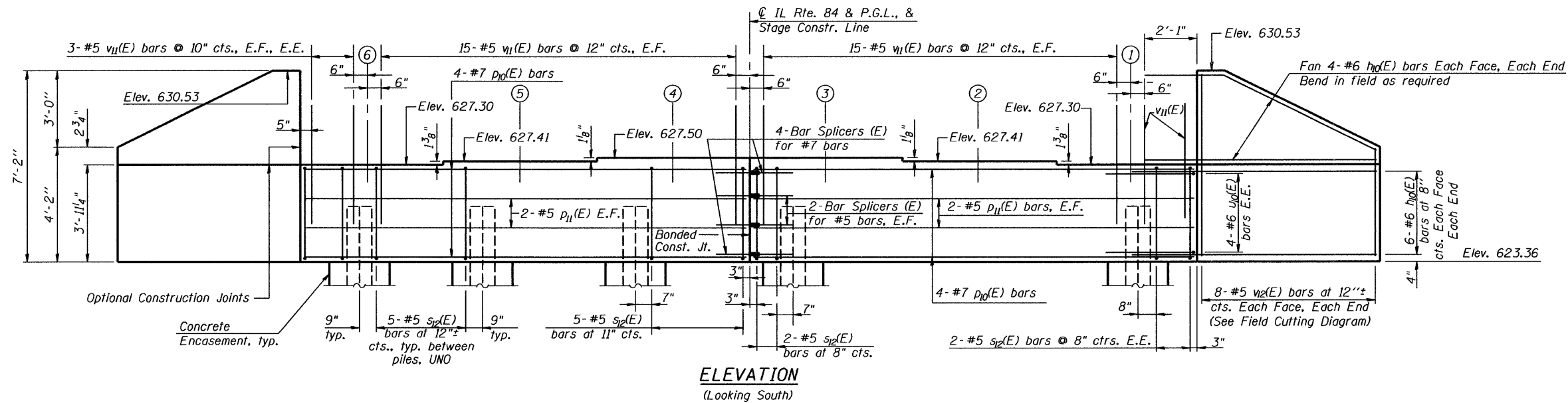


STATE OF ILLINOIS  
DEPARTMENT OF TRANSPORTATION

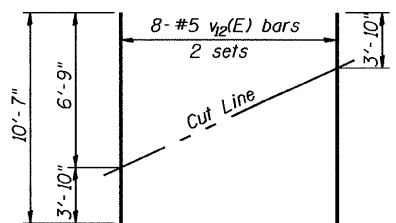


**BILL OF MATERIAL**

Bar	No.	Size	Length	Shape
h <sub>10</sub> (E)	40	#6	9'-7"	—
p <sub>10</sub> (E)	16	#7	17'-3"	—
p <sub>11</sub> (E)	8	#5	17'-3"	—
sp <sub>12</sub> (E)	36	#5	12'-4"	□
u <sub>10</sub> (E)	8	#6	9'-6"	□
v <sub>11</sub> (E)	72	#5	4'-4"	—
v <sub>12</sub> (E)	16	#5	10'-7"	—
Structure Excavation			Cu. Yd.	115
Concrete Structures			Cu. Yd.	16.1
Concrete Encasement			Cu. Yd.	2.4
Reinforcement Bars, Epoxy Coated			Pound	2,360
Bar Splicers			Each	12
Furnishing Steel Piles HPI2x63			Foot	282
Driving Piles			Foot	282
Test Pile Steel HPI2x63			Each	1
Pile Shoes			Each	7

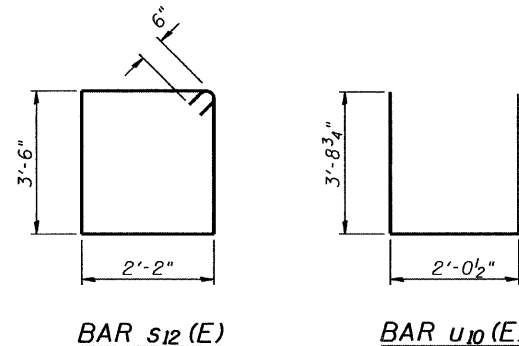
**PILE DATA**

Pile Type and Size: Steel HP 12x63 with Pile Shoes  
Nominal Required Bearing: 498 kip  
Factored Resistance Available: 279 kip  
Est. Length: 47 ft. (See Note 4)  
No. Production Piles: 6  
No. Test Piles: 1  
Estimated Top of Rock Elevation: 581.00



**FIELD CUTTING DIAGRAM**

Order v<sub>12</sub>(E) full length. Cut as shown and use remainder of bars in opposite face.



**NOTES**

1. Pour abut. steps monolithically with cap.
2. For details of Bar Splicers, see sheet SB19 of 23.
3. For details of piles and Concrete Encasement, see sheet SB18 of 23.
4. Estimated pile lengths have been increased by 2' for penetration into rock.
5. E.F. denotes each face.
6. E.E. denotes each end.

**SOUTH ABUTMENT**  
Illinois Rte. 84 Over Duke Creek  
**STATION 336+42.00      STRUCTURE NO. 043-0079**

SHEET NO. SB16 OF 23 SHEETS	F.A.P. RTE.	SECTION	COUNTY	TOTAL SHEETS	SHEET NO.
	308	103BR-3	JO DAVIESS	126	77
<b>CONTRACT NO. 64B26</b>					
10-15-2010		ILLINOIS FED. AID PROJECT			

DESIGNED	J.Z.
CHECKED	E.E.J.
DRAWN	R.B.H.
CHECKED	E.E.J.