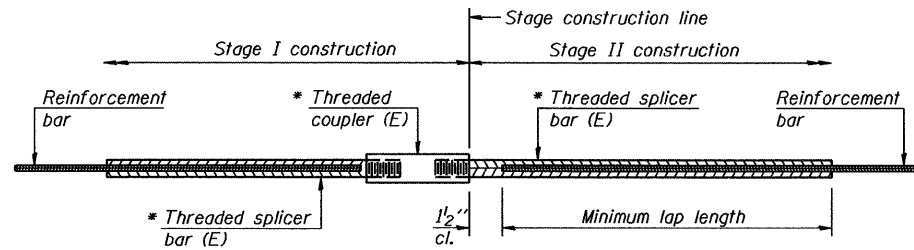


STATE OF ILLINOIS
DEPARTMENT OF TRANSPORTATION



STANDARD BAR SPLICER ASSEMBLY

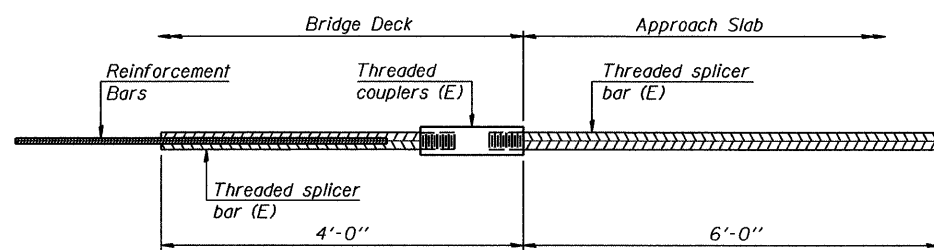
| Bar size to be spliced | Minimum Lap Lengths | | | | | |
|------------------------|---------------------|---------|---------|---------|---------|---------|
| | Table 1 | Table 2 | Table 3 | Table 4 | Table 5 | Table 6 |
| 3, 4 | 1'-5" | 1'-11" | 2'-1" | 2'-4" | 2'-7" | 2'-11" |
| 5 | 1'-9" | 2'-5" | 2'-7" | 2'-11" | 3'-3" | 3'-8" |
| 6 | 2'-1" | 2'-11" | 3'-1" | 3'-6" | 3'-10" | 4'-5" |
| 7 | 2'-9" | 3'-10" | 4'-2" | 4'-8" | 5'-2" | 5'-10" |
| 8 | 3'-8" | 5'-1" | 5'-5" | 6'-2" | 6'-9" | 7'-8" |
| 9 | 4'-7" | 6'-5" | 6'-10" | 7'-9" | 8'-7" | 9'-8" |

- Table 1: Black bar, 0.8 Class C
- Table 2: Black bar, Top bar lap, 0.8 Class C
- Table 3: Epoxy bar, 0.8 Class C
- Table 4: Epoxy bar, Top bar lap, 0.8 Class C
- Table 5: Epoxy bar, Class C
- Table 6: Epoxy bar, Top bar lap, Class C

Threaded splicer bar length = min. lap length + 1/2" + thread length

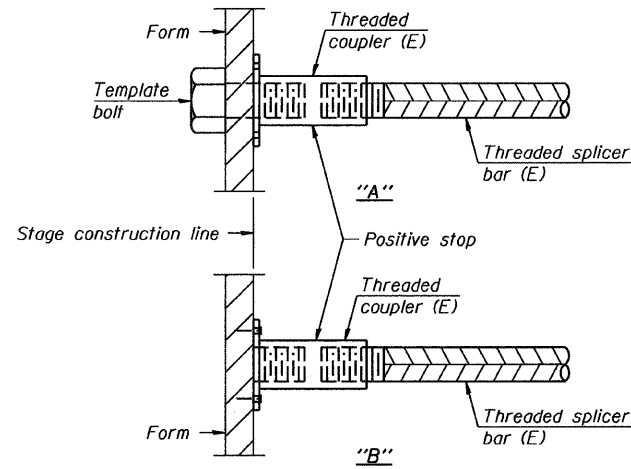
* Epoxy not required on Bar Splicer Assembly components used in conjunction with black bars.

| Location | Bar size | No. assemblies required | Table for minimum lap length |
|----------------|----------|-------------------------|------------------------------|
| Deck | #5 | 150 | 3 |
| Diaphragms | #6 | 16 | 6 |
| Approach Slabs | #4 | 50 | 4 |
| Approach Slabs | #5 | 172 | 3 |
| Abutments | #5 | 8 | 6 |
| Abutments | #7 | 16 | 6 |



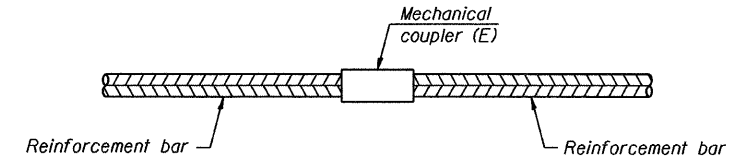
BAR SPLICER ASSEMBLY FOR #5 BAR ON INTEGRAL OR SEMI-INTEGRAL ABUTMENTS

No. required = 76



INSTALLATION AND SETTING METHODS

- "A" : Set bar splicer assembly by means of a template bolt.
- "B" : Set bar splicer assembly by nailing to wood forms or cementing to steel forms.
- (E) : Indicates epoxy coating.

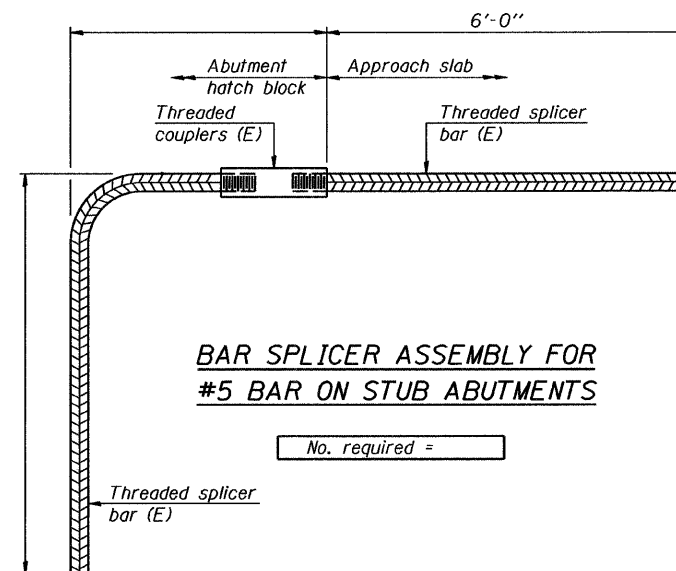


STANDARD MECHANICAL SPLICER

| Location | Bar size | No. assemblies required |
|----------|----------|-------------------------|
| | | |
| | | |
| | | |
| | | |

NOTES

- Splicer bars shall be deformed with threaded ends and have a minimum 60 ksi yield strength.
- All reinforcement shall be lapped and tied to the splicer bars.
- Bar splicer assemblies shall be epoxy coated according to the requirements for reinforcement bars. See Section 508 of the Standard Specifications.
- See special provision for Mechanical Splicers.
- See approved list of bar splicer assemblies and mechanical splicers for alternatives.



BAR SPLICER ASSEMBLY FOR #5 BAR ON STUB ABUTMENTS

No. required =

I:\Projects\2010\20100301\cadd\structure\1\sign\80\SB19_BAR_SPLICERS.dgn 10/12/2010

| | |
|----------|--------|
| DESIGNED | E.E.J. |
| CHECKED | J.A.Z. |
| DRAWN | E.E.J. |
| CHECKED | J.A.Z. |

GRÄEF 8501 W. Higgins Road, Suite 280
Chicago, Illinois 60631
(773) 399-0112

| BAR SPLICER ASSEMBLY DETAILS | | | | | |
|----------------------------------|-------------|---------|--------------------------------------|--------------|-----------|
| Illinois Rte. 84 Over Duke Creek | | | | | |
| STATION 336+42.00 | | | STRUCTURE NO. 043-0079 | | |
| SHEET NO. | F.A.P. RTE. | SECTION | COUNTY | TOTAL SHEETS | SHEET NO. |
| SB19 OF 23 SHEETS | 308 | 103BR-3 | JO DAVIESS | 126 | 80 |
| CONTRACT NO. 64B26 | | | 10-15-2010 ILLINOIS FED. AID PROJECT | | |