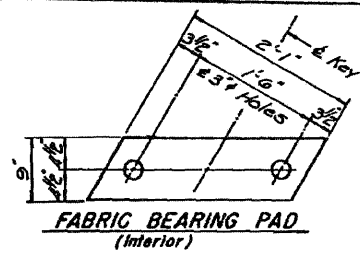
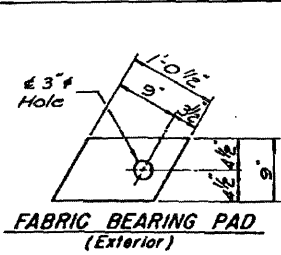


ROUTE NO.	SECTION	COUNTY	TOTAL SHEETS	SHEET NO.
F.A. 18	104 BR	JO DAVIESS	19	9

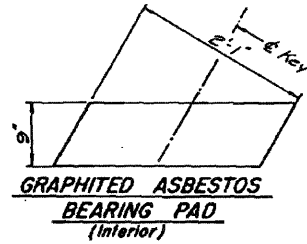
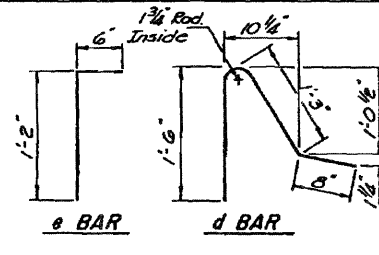
SHEET 3 OF 7



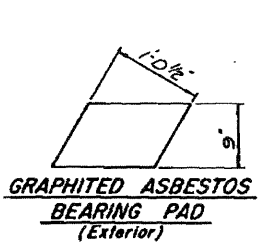
FABRIC BEARING PAD (Interior)



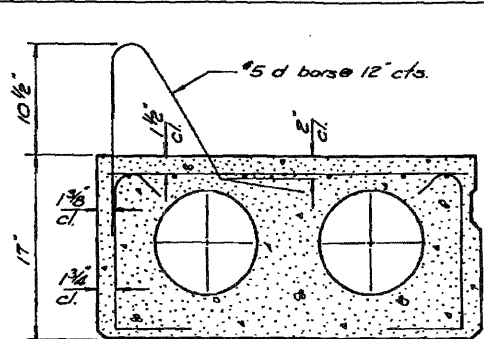
FABRIC BEARING PAD (Exterior)



GRAPHITED ASBESTOS BEARING PAD (Interior)

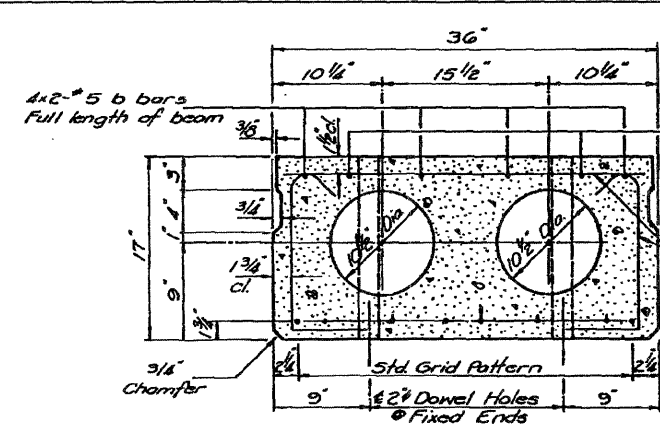


GRAPHITED ASBESTOS BEARING PAD (Exterior)

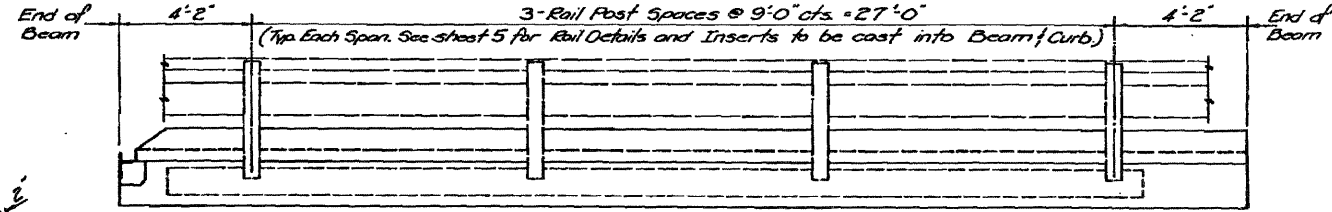


Note: Omit longitudinal shear key on exterior face of curb units.

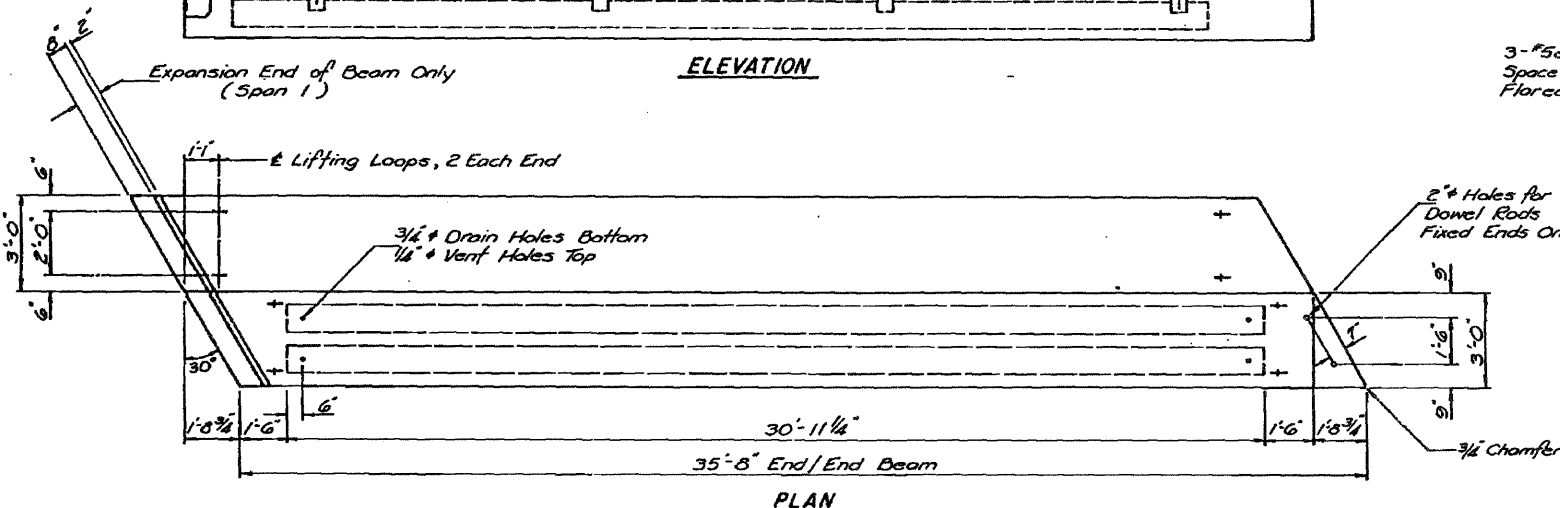
TYPICAL SECTION - CURB UNIT (See Interior Unit for dimensions of reinforcement other than d bars.)



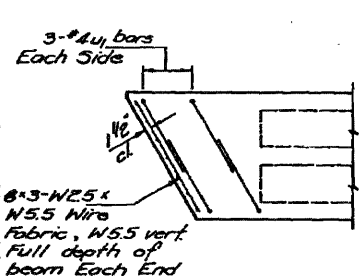
12# Strands, Each Strand Stressed to 28,900 lbs. 8# Strands 1 3/4\"/>



ELEVATION

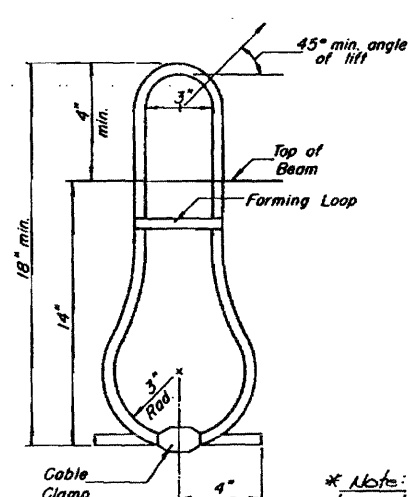


PLAN

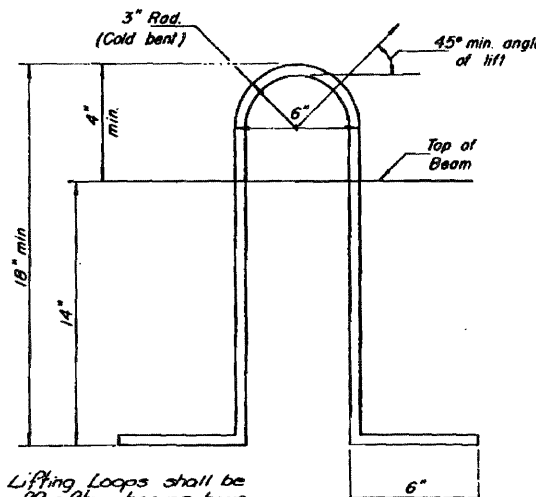


END PLAN (FIXED END)

DESIGNED:	V. S. N.
CHECKED:	D. H. C.
DRAWN:	R. A. W.
CHECKED:	K. L. F.

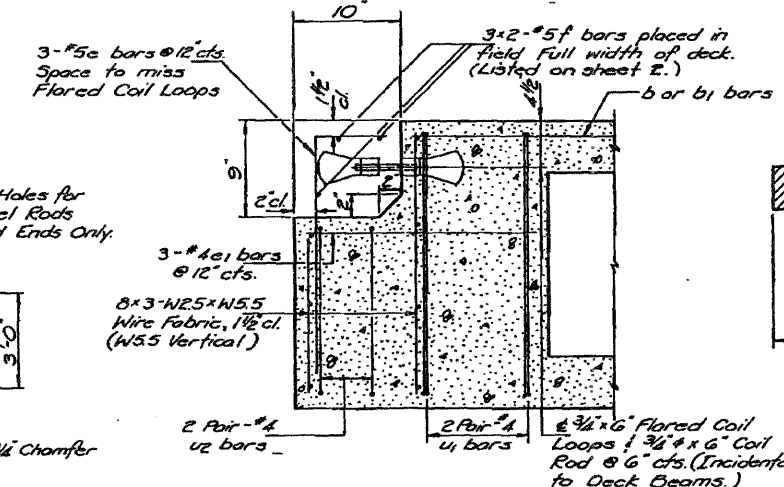


LIFTING LOOP DETAIL ALTERNATE (2)



LIFTING LOOP DETAIL ALTERNATE (1)

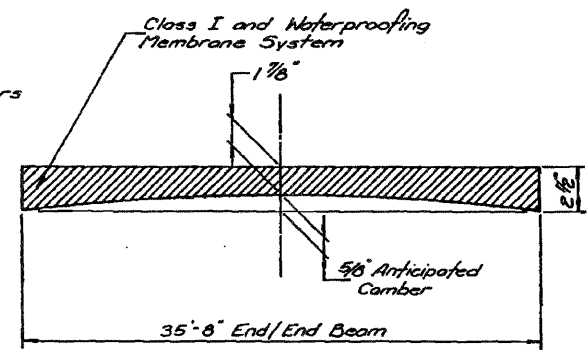
* Note: Lifting Loops shall be burned off after beams have been erected.



END OF BEAM (EXP END)

NOTES

Prestressing steel shall be non-galvanized high strength, stress-relieved 7-wire strand, Grade 270. The nominal diameter shall be 1/2\"/>



ANTICIPATED CAMBER DIAGRAM

ONE BEAM BILL OF MATERIAL

Bar Size	Curb Unit			Interior Unit		
	No.	Length	Shape	No.	Length	Shape
#5	8	18'-7"	□	8	18'-7"	□
#4	4	7'-3"	—	4	7'-3"	—
#5	36	3'-9"	┘			
#5	3	1'-8"	┘	3	1'-8"	┘
#4	3	1'-3"	—	3	1'-3"	—
#4	10	6'-0"	□	10	6'-0"	□
#4	4	5'-3"	□	4	5'-3"	□
Class 1 Concrete	208		4E			4E
Reinforcement Bars			380			230
Weight of Beam			16,657			16,657

* These bars required for expansion end only of Span 1 Beams.

DETAILS PRECAST PRESTRESSED CONCRETE DECK BEAMS 17'x36" F.A. 18 OVER TRIBUTARY TO APPLE RIVER SECTION 104-BR JO DAVIESS COUNTY STATION 125 + 71.00

FOR INFORMATION ONLY