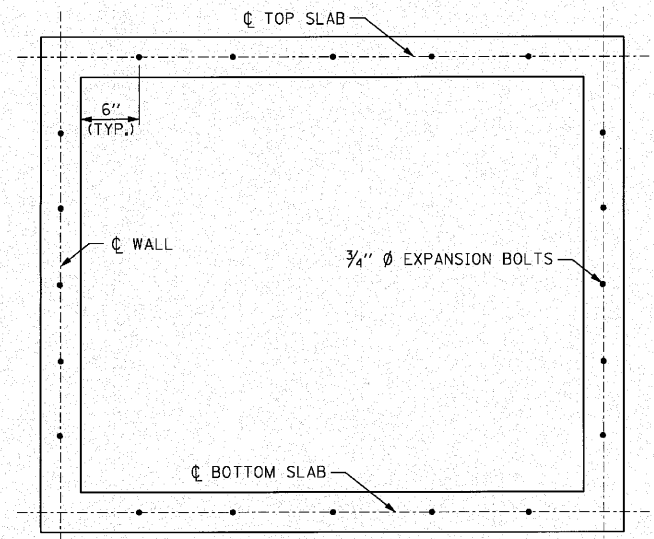
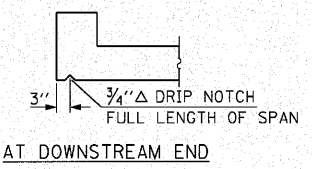
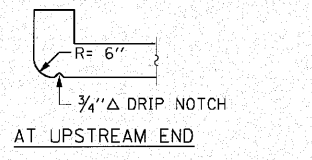


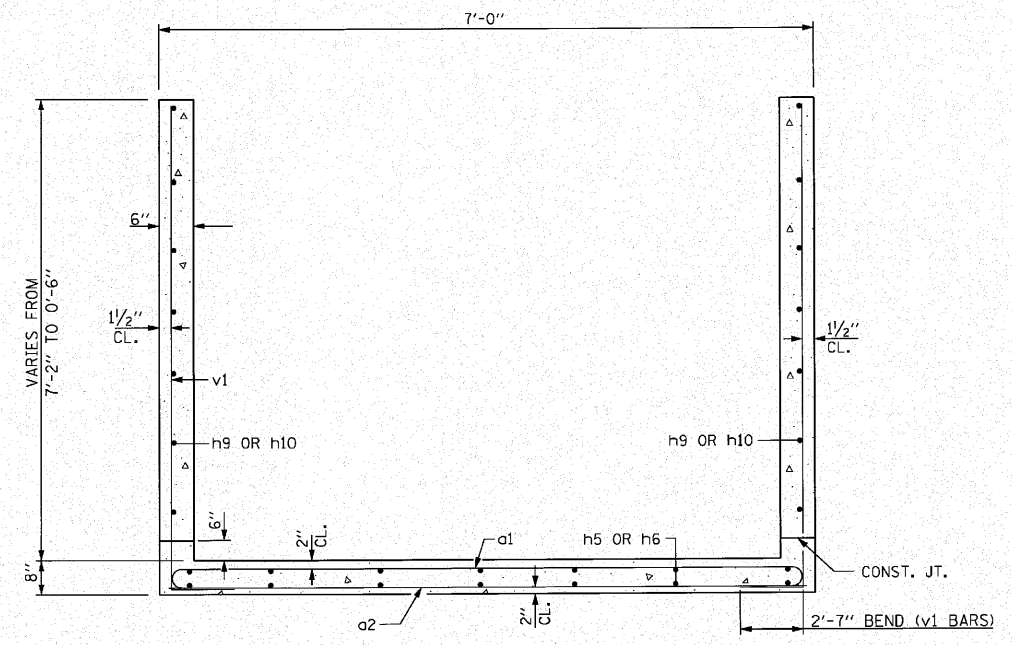
NOTE:
FOR SECTION THRU BARREL SEE SHEET 3 OF 5.

- ORDER a1 AND a2 FULL LENGTH, CUT TO FIT SKEW AND USE REMAINDER IN OPPOSITE END.
- EXTEND h2 AND h3 BARS IN THE BOTTOM SLAB OF END SECTION AS SHOWN



EXPANSION BOLTS SHALL BE 3/4" Ø HOOKED BOLTS AND SHALL EXTEND A MINIMUM OF 9" INTO NEW CONCRETE.

PLAN



FILE NAME = \$FILEL\$

LI ENGINEERING, LTD.
Consulting Engineers
Chatham, Illinois

USER NAME = \$USER\$	DESIGNED - TBP	REVISED -
PLOT SCALE = \$SCALE\$	DRAWN - TBP	REVISED -
PLOT DATE = \$DATE\$	CHECKED - ADB	REVISED -
	DATE - 07/16/2010	REVISED -

STATE OF ILLINOIS
DEPARTMENT OF TRANSPORTATION

CULVERT DETAILS-1
STRUCTURE NO. 037-1085

SCALE: SHEET NO. 2 OF 5 SHEETS STA. TO STA.

F.A.P. RTE. 638	SECTION 129BR-4	COUNTY HENRY	TOTAL SHEETS 93	SHEET NO. 52
CONTRACT NO. 64D25				
ILLINOIS FED. AID PROJECT				