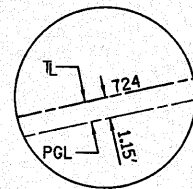
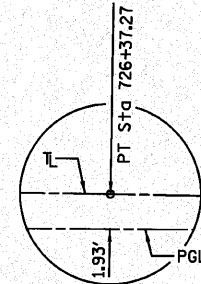


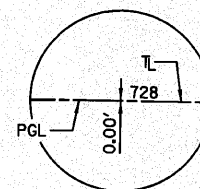
**CURVE DATA**  
 PI STA. = 723+99.78  
 $\Delta = 27^\circ 26' 30.75''$  (RT)  
 $D = 5^\circ 39' 52''$   
 $R = 1,011.51'$   
 $T = 246.97'$   
 $L = 484.46'$   
 $E = 29.71'$   
 $\theta = 5.9\%$   
 $T.R. = 36.1'$   
 $S.E. RUN = 142.0'$   
 $P.C. STA = 721+52.81$   
 $P.T. STA = 726+37.27$



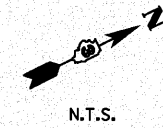
ENLARGED VIEW A



ENLARGED VIEW B

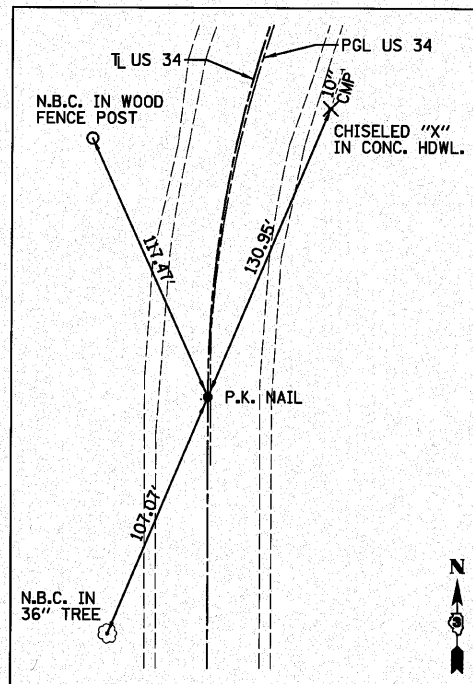


ENLARGED VIEW C

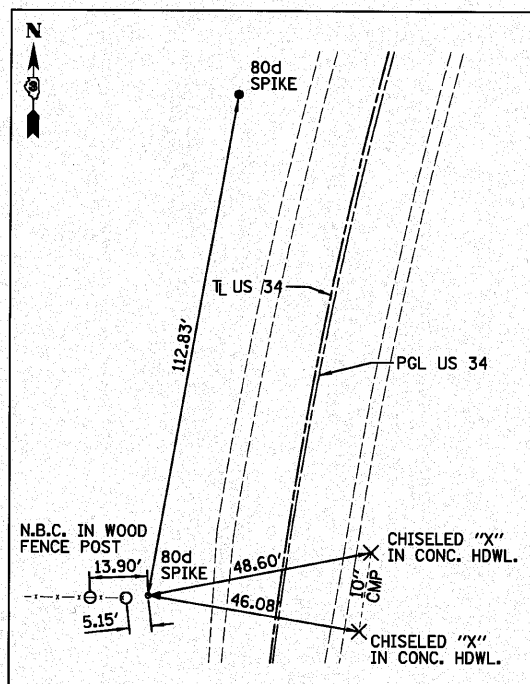


**BENCHMARK #1**  
 STA 729+58, 16' LT  
 BRASS DISK TOP OF  
 N.W. WINGWALL  
 ELEV=764.89

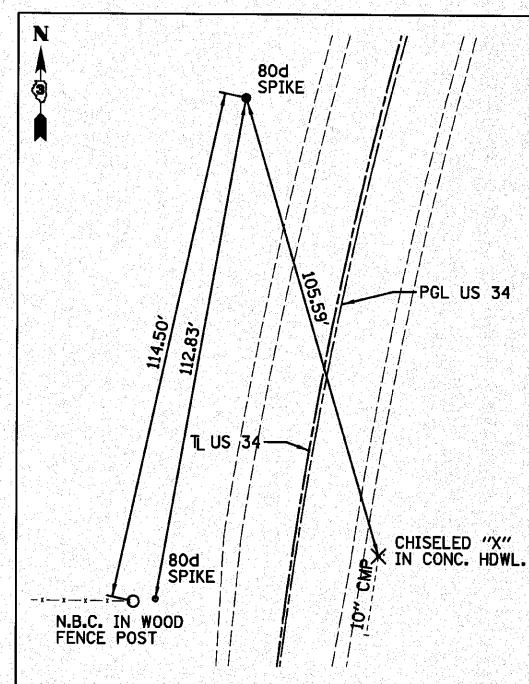
**BENCHMARK #2**  
 STA 730+63, 29' LT  
 RAILROAD SPIKE IN  
 POWER POLE  
 ELEV=763.30



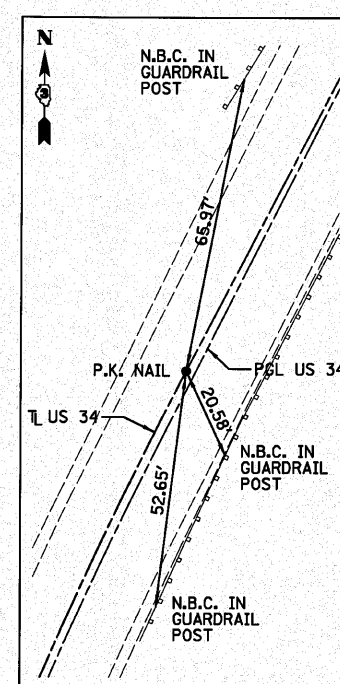
US 34  
 STA 721+52.81 (P.C.)  
 $N = 1767682.422$   
 $E = 2537774.962$



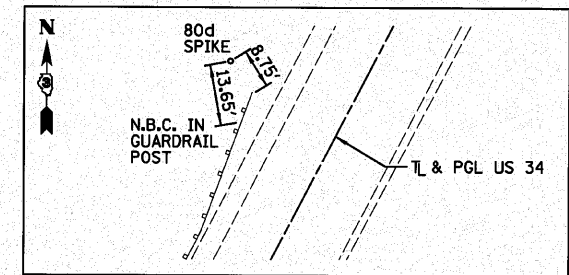
CONTROL POINT #541  
 STA 722+85.33, 28.57' LT  
 $N = 1767818.283$   
 $E = 2537755.230$   
 ELEV = 769.446



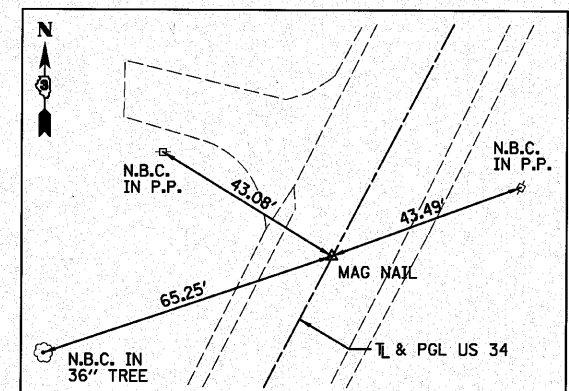
US 34  
 STA 723+99.78 (P.I.)  
 $N = 1767929.394$   
 $E = 2537774.822$



US 34  
 STA 726+37.27 (P.T.)  
 $N = 1768148.640$   
 $E = 2537888.514$



CONTROL POINT #541  
 STA 732+50.53, 28.31' LT  
 $N = 1768706.085$   
 $E = 2538145.692$   
 ELEV = 764.480



US 34  
 STA 735+00.28, 0.17' LT.  
 $N = 1768914.845$   
 $E = 2538285.649$

FILE NAME =	USER NAME = #USER#	DESIGNED - JML	REVISED -	<b>STATE OF ILLINOIS DEPARTMENT OF TRANSPORTATION</b>	<b>ALIGNMENT, SURVEY TIES AND BENCHMARKS</b>	F.A.S. RTE.	SECTION	COUNTY	TOTAL SHEETS	SHEET NO.	
*FILE#		DRAWN - JJO	REVISED -			1249	(23 BRBR)	BUREAU	39	9	
PLOT SCALE = #SCALE#		CHECKED - MSW	REVISED -			CONTRACT NO. 66909					
PLOT DATE = #DATE#		DATE - 10/08/10	REVISED -			FED. ROAD DIST. NO.	ILLINOIS	FED. AID PROJECT			
					SCALE	SHEET NO.	OF SHEETS	STA.	TO STA.		

FARNSWORTH GROUP, INC.

CONSULTING ENGINEERS - 2709 MCGRAW DRIVE BLOOMINGTON, ILLINOIS 61704 (309) 663-8435 / (309) 663-1571 FAX