

**STATE OF ILLINOIS**  
**DEPARTMENT OF TRANSPORTATION**  
**DIVISION OF HIGHWAYS**  
**PROPOSED**  
**HIGHWAY PLANS**

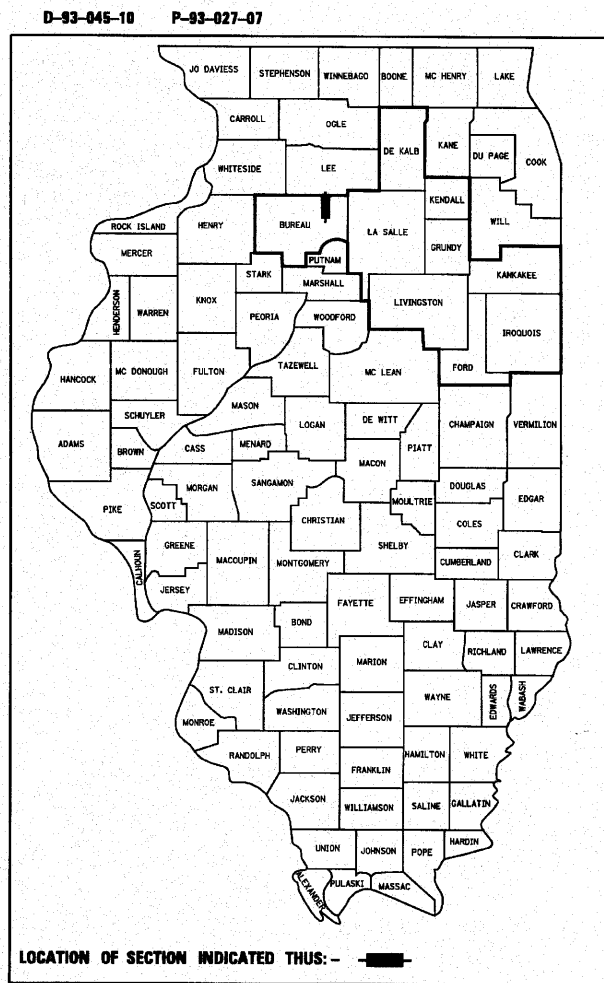
**F.A.P. ROUTE 698 (IL 89)**  
**SECTION (101 BR)BR**  
**PROJECT F-0698(032)**  
**STRUCTURE REPLACEMENT**  
**BUREAU COUNTY**

C-93-101-10

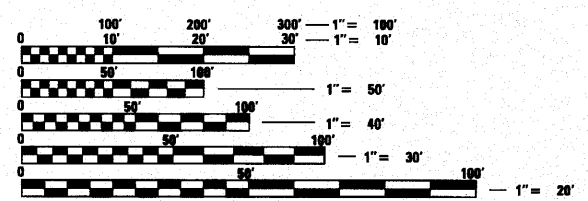
F.A.P. RTE.	SECTION	COUNTY	TOTAL SHEETS	SHEET NO.
698	(101 BR)BR	BUREAU	47	1
ILLINOIS CONTRACT NO. 66910				

**INDEX OF SHEETS**

1	COVER SHEET
2	HIGHWAY STANDARDS, GENERAL NOTES AND COMMITMENTS
3-4	SUMMARY OF QUANTITIES
5-6	TYPICAL SECTIONS
7-8	SCHEDULE OF QUANTITIES
9	ALIGNMENT, SURVEY TIES AND BENCHMARKS
10-11	PLAN & PROFILE SHEETS
12	STAGE I CONSTRUCTION
13	STAGE II CONSTRUCTION
14	EROSION CONTROL PLAN
15-37	BRIDGE PLANS S.N. 006-0181 (PR.)/006-0104 (EX.)
38-41	DETAILS
42-47	CROSS SECTIONS



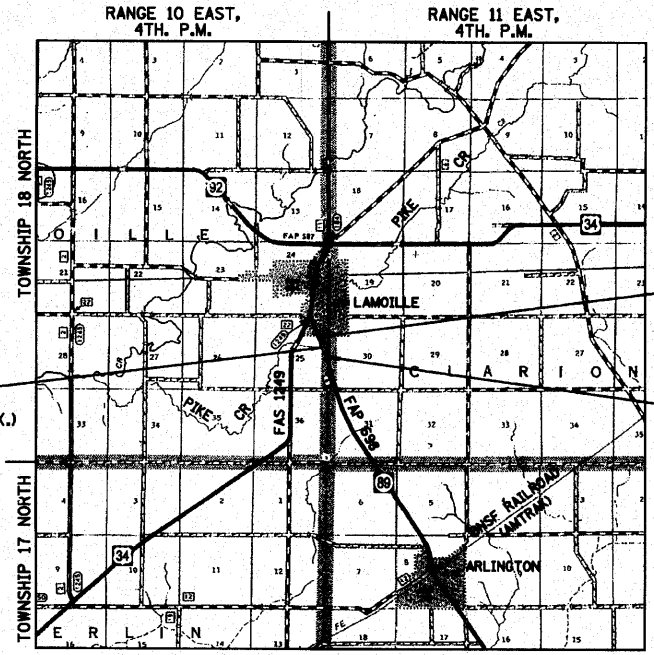
FOR LIST OF STANDARDS, SEE SHEET NO. 2



FULL SIZE PLANS HAVE BEEN PREPARED USING STANDARD ENGINEERING SCALES. REDUCED SIZED PLANS WILL NOT CONFORM TO STANDARD SCALES. IN MAKING MEASUREMENTS ON REDUCED PLANS, THE ABOVE SCALES MAY BE USED.

J.U.L.I.E.  
 JOINT UTILITY LOCATION INFORMATION FOR EXCAVATION  
 1-800-892-0123  
 OR 811

DISTRICT 3 NO. (815) 434-6131  
 PROJECT ENGINEER: CRAIG REED  
 UNIT CHIEF: MARK JONES  
 CONTRACT NO. 66910



STATION 29+41.00  
 S.N. 006-0181 (PR.)/006-0104 (EX.)  
 145'-0" LONG TWO SPAN STEEL  
 BEAM BRIDGE OVER PIKE CREEK  
 (STRUCTURE REPLACEMENT)

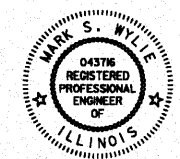
IMPROVEMENT BEGINS  
 STA 24+38.00

IMPROVEMENT ENDS  
 STA 34+20.00

LOCATION MAP



GROSS LENGTH = 982.0 FT. = 0.19 MILE  
 NET LENGTH = 982.0 FT. = 0.19 MILE



*Mark S. Wylie* Date 10/8/10  
 MARK S. WYLIE  
 ILLINOIS PROFESSIONAL ENGINEER  
 NO. 062-04376  
 EXPIRATION 11/30/11

**FUNCTIONAL CLASSIFICATION**  
**RURAL MINOR ARTERIAL**  
**(CLASS III TRUCK ROUTE)**  
 2012 ADT = 1600  
 P.V. = 87% S.U. = 6% M.U. = 7%

STATE OF ILLINOIS  
 DEPARTMENT OF TRANSPORTATION  
 DIVISION OF HIGHWAYS

SUBMITTED *October 21 2010*  
*George Ryan*  
 DEPUTY DIRECTOR OF HIGHWAYS, REGION ENGINEER

*December 10 2010*  
*Scott E. Stitt P.E.*  
 acting ENGINEER OF DESIGN AND ENVIRONMENT

*December 10 2010*  
*Christine M. Reed*  
 DIRECTOR OF HIGHWAYS, CHIEF ENGINEER

**PRINTED BY THE AUTHORITY**  
**OF THE STATE OF ILLINOIS**