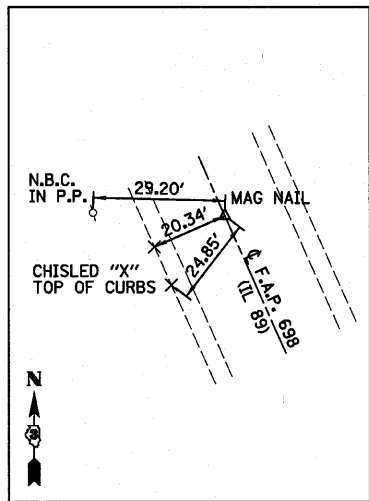
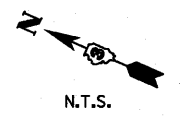
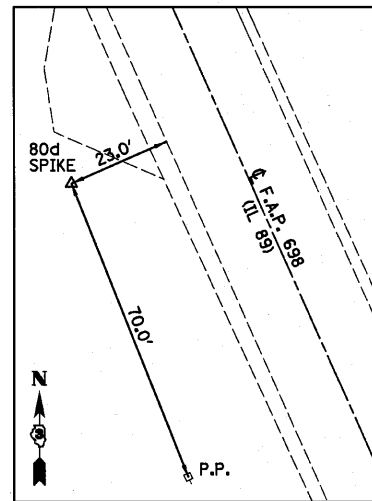


CURVE DATA
 PI STA. = 33+82.01
 Δ = 6° 44' 30" (RT)
 D = 1° 30' 00"
 R = 3,819.81'
 T = 224.99'
 L = 449.46'
 E = 6.62'
 e = 3.60%
 T.R. = 41.53'
 S.E. RUN = 99.68'
 P.C. STA. = 31+57.02
 P.T. STA. = 36+06.48



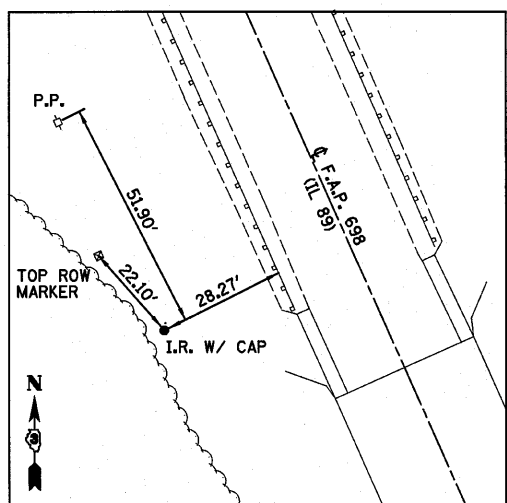
IL 89
 STA 17+70.24
 N = 1769349.254
 E = 2539588.449



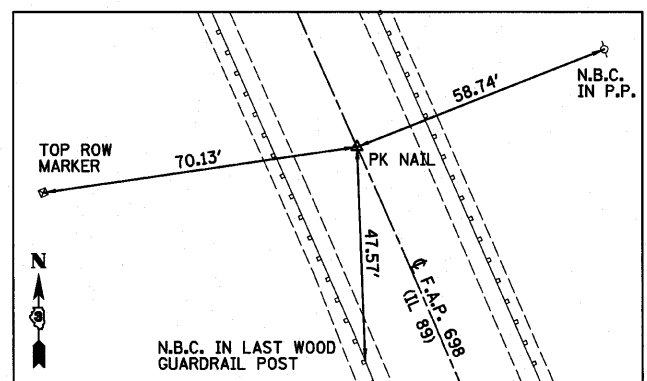
CONTROL POINT #531
 STA 23+79.92, 36.69' RT
 N = 1768776.953
 E = 2539801.810
 ELEV = 767.42

BENCHMARK #1
 STA 29+90, 17' LT
 CHISELED "X" ON
 S.E. WINGWALL
 ELEV=770.49

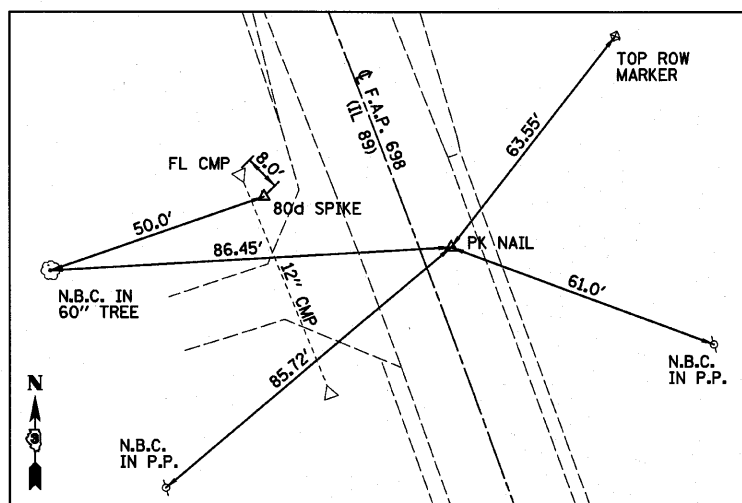
BENCHMARK #2
 STA 28+84, 51' RT
 TOP OF ROW
 MARKER
 ELEV=763.57



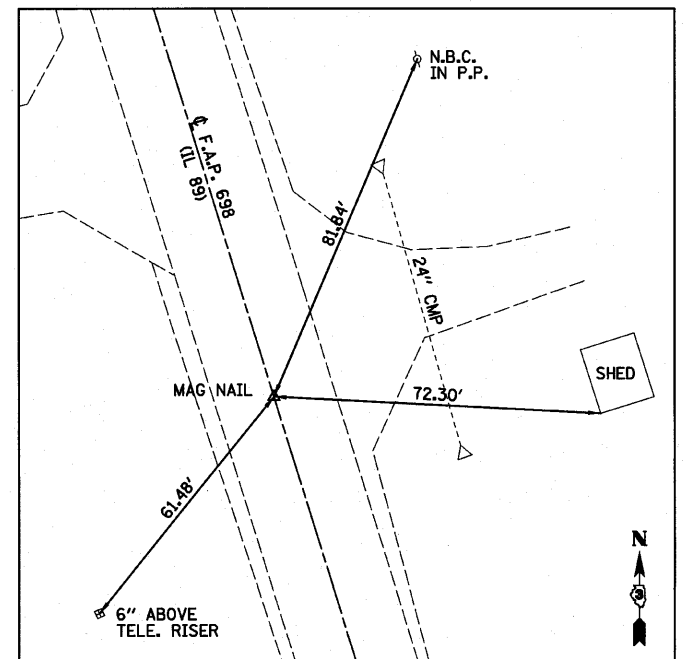
CONTROL POINT #11
 STA 29+04.41, 43.60' RT
 N = 1768294.597
 E = 2540007.891
 ELEV = 762.24



IL 89
 STA 31+57.02
 N = 1768081.272
 E = 2540150.048



CONTROL POINT #530
 STA 33+59.34, 26.87' RT
 N = 1767884.635
 E = 2540201.924
 ELEV = 783.91



IL 89
 STA 36+79.54
 N = 1767590.745
 E = 2540328.999

FILE NAME =	USER NAME = #USER#	DESIGNED - JML	REVISED -	STATE OF ILLINOIS DEPARTMENT OF TRANSPORTATION	ALIGNMENT, SURVEY TIES AND BENCHMARKS	F.A.P. RTE. 698	SECTION (101 BR)BR	COUNTY BUREAU	TOTAL SHEETS 47	SHEET NO. 9		
#FILE#	PLOT SCALE = #SCALE#	CHECKED - MSW	REVISED -			CONTRACT NO. 66910		FED. ROAD DIST. NO.	ILLINOIS FED. AID PROJECT			
	PLOT DATE = #DATE#	DATE - 10/08/10	REVISED -			SCALE:	SHEET NO. OF SHEETS	STA. TO STA.				
FARNSWORTH GROUP, INC. CONSULTING ENGINEERS - 2709 MCGRAW DRIVE BLOOMINGTON, ILLINOIS 61704 (309) 663-8435 / (309) 663-1571 FAX 24-8371												