

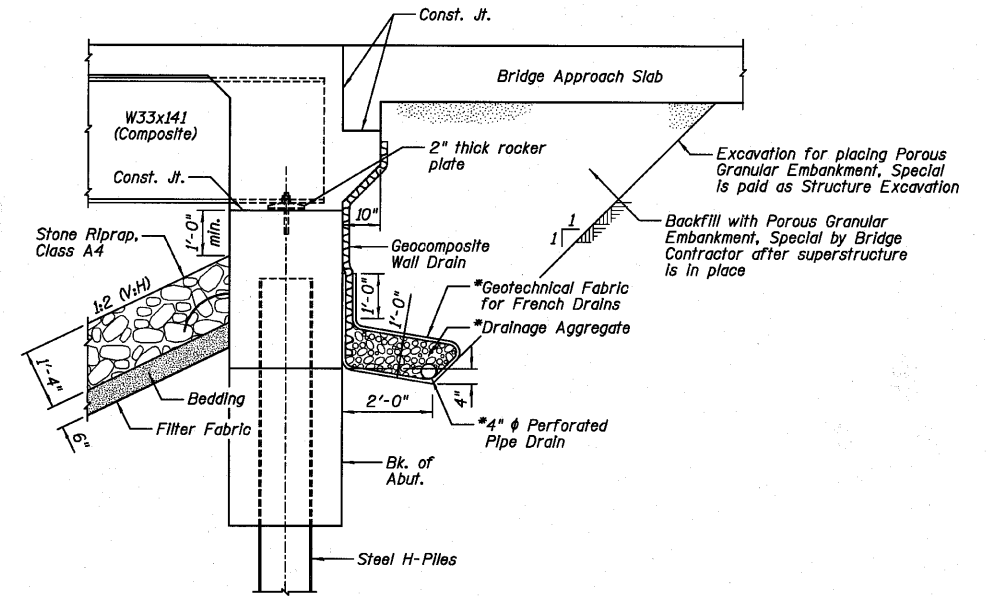
STATE OF ILLINOIS
DEPARTMENT OF TRANSPORTATION

TOTAL BILL OF MATERIAL

ITEM	UNIT	SUPER	SUB	TOTAL
Porous Granular Embankment, Special	Cu. Yd.		116	116
Stone Riprap, Class A4	Sq. Yd.		1,733	1,733
Filter Fabric	Sq. Yd.		1,733	1,733
Removal of Existing Structures	Each	1		1
Structure Excavation	Cu. Yd.		209	209
Concrete Structures	Cu. Yd.		101.0	101.0
Concrete Superstructure	Cu. Yd.	293.9		293.9
Bridge Deck Grooving	Sq. Yd.	683		683
Concrete Encasement	Cu. Yd.		12.1	12.1
Protective Coat	Sq. Yd.	885		885
Furnishing and Erecting Structural Steel	L. Sum	1		1
Stud Shear Connectors	Each	2,160		2,160
Reinforcement Bars, Epoxy Coated	Pound	76,000	6,220	82,220
Bar Splicers	Each	737	48	785
Furnishing Steel Piles HP14x73	Foot		645	645
Driving Piles	Foot		645	645
Test Pile Steel HP14x73	Each		2	2
Name Plates	Each	1		1
Anchor Bolts, 1"	Each	36		36
Geocomposite Wall Drain	Sq. Yd.		66	66
Pipe Underdrains for Structures 4"	Foot		138	138
Temporary Soil Retention System	Sq. Ft.		1,149	1,149
Underwater Structure Excavation Protection - Location 1	Each		1	1
Asbestos Bearing Pad Removal	Each		22	22

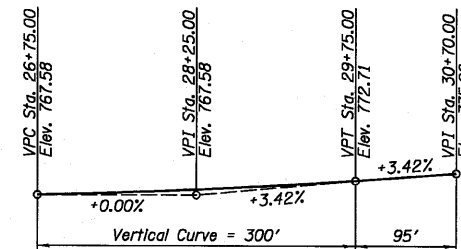
STATION 29+41.00
BUILT 20__ BY
STATE OF ILLINOIS
F.A.P. RT. 698 - SEC. (101 BR)BR
LOADING HL-93
STRUCTURE NO. 006-0181

NAME PLATE
See Std. 515001



SECTION THRU SOUTH ABUTMENT
(Similar for North Abutment)

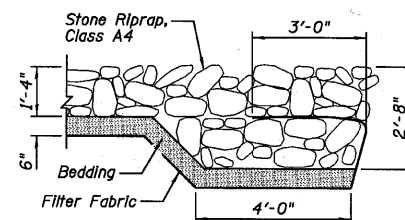
- NOTES:
- *Included in the cost of Pipe Underdrains for Structures 4".
 - All drainage system components shall extend to 2'-0" from the end of each wingwall except an outlet pipe shall extend until intersecting with the side slopes. The pipes shall drain into concrete headwalls. (See Article 601.05 of the Standard Specifications and Highway Standard 601101)



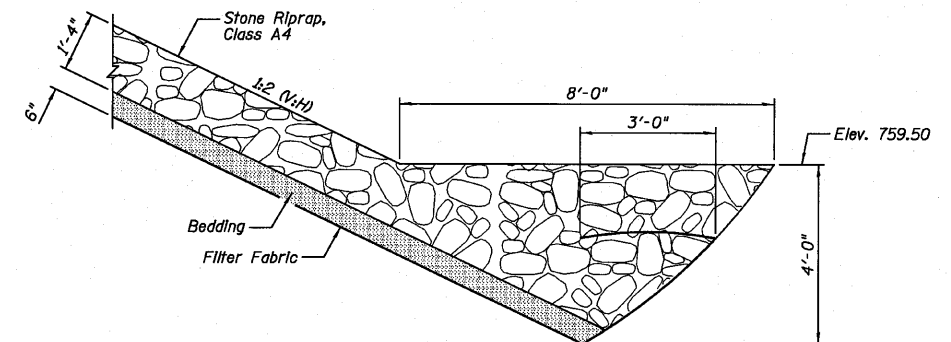
PROFILE GRADE
(Along & Roadway)

GENERAL NOTES:

- Fasteners shall be AASHTO M164 Type 1, mechanically galvanized bolts in painted areas and M164 Type 3 in unpainted areas. Bolts $\frac{1}{8}$ in. ϕ , holes $\frac{1}{8}$ in. ϕ , unless otherwise noted.
- Calculated weight of Structural Steel = 134,350 lb.
- All structural steel shall be AASHTO M270 Grade 50W. All structural steel shall be cleaned as specified in the Special Provision for "Surface Preparation and Painting Requirements for Weathering Steel".
- No field welding is permitted except as specified in the contract documents.
- Reinforcement bars shall conform to the requirements of ASTM A 706 Gr 60. See Special Provisions.
- Reinforcement bars designated (E) shall be epoxy coated.
- Bearing seat surfaces shall be constructed or adjusted to the designated elevations within a tolerance of $\frac{1}{8}$ in. (0.01 ft.). Adjustment shall be made either by grinding the surface or by shimming the bearings.
- Structural steel shall only be painted for a distance equal to the depth of embedment into the concrete cap plus 3 in. Painted areas shall be primed in the shop with a Department approved zinc rich primer. Field painting will not be required.
- Layout of the slope protection system may be varied to suit ground conditions in the field as directed by the Engineer.
- Slipforming of parapets is not allowed.
- The Contractor is advised that the existing structure contains members that are in a deteriorated condition with reduced load carrying capacity. It is the Contractor's responsibility to account for the condition of the existing structure when developing construction procedures for the complete or partial removal, or replacement of the structure.



SECTION A-A



SECTION B-B

DESIGNED SDH
CHECKED JML
DRAWN DJM
CHECKED MSW

DATE 10/08/10

GENERAL DATA
STRUCTURE NO. 006-0181

Farnsworth GROUP, INC. 2709 McGraw Drive Bloomington, Illinois 61704 309/663-8435, 309/663-1571 fax	SHEET NO. B2	F.A.P. RTE. 698	SECTION (101 BR)BR	COUNTY BUREAU	TOTAL SHEETS 47	SHEET NO. 16
	23 SHEETS	CONTRACT NO. 66910				
FED. ROAD DIST. NO.		ILLINOIS		FED. AID PROJECT		