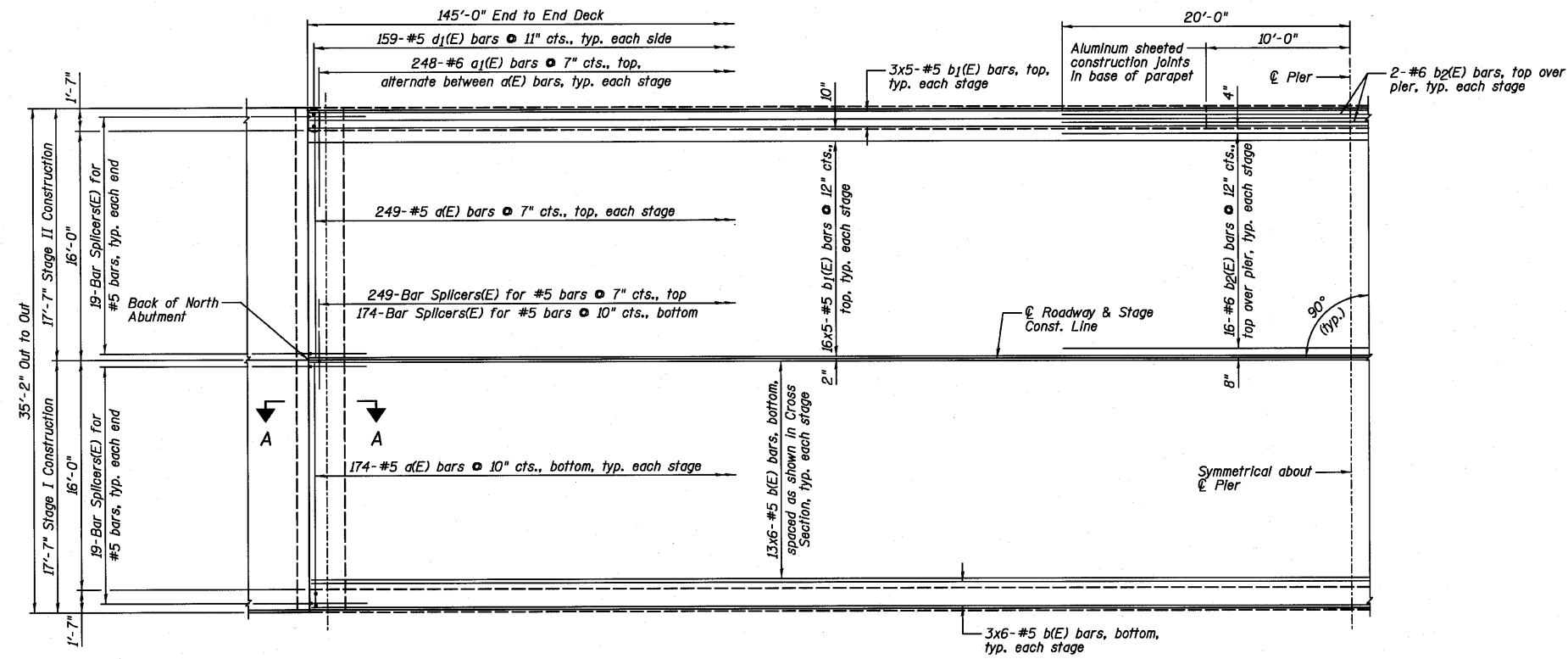


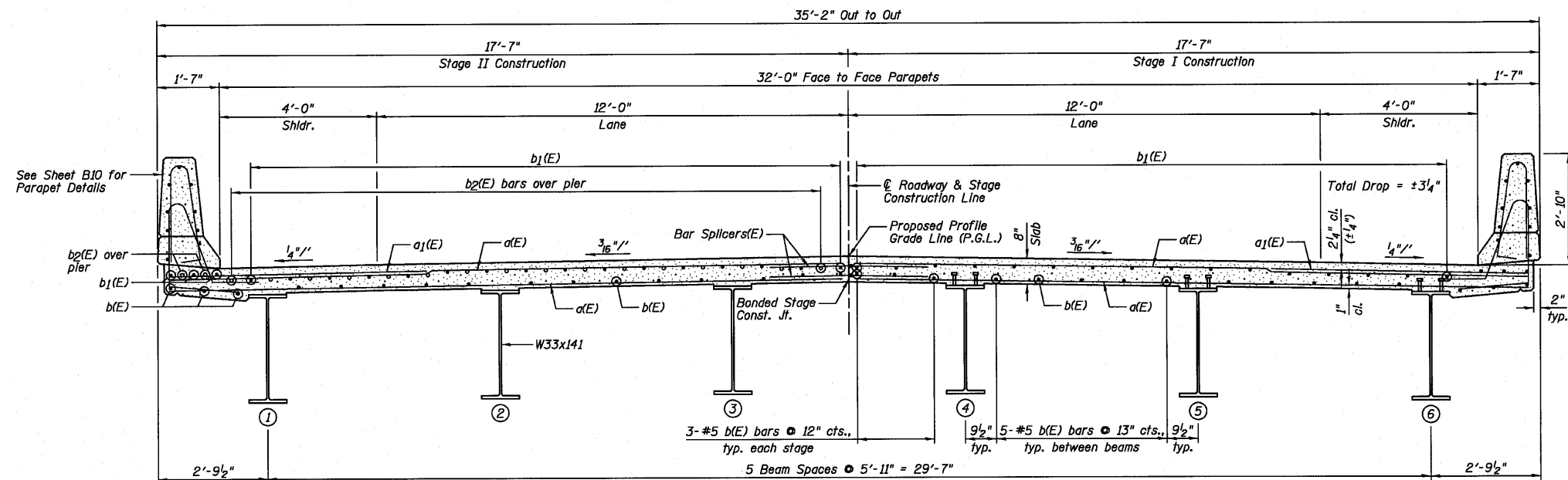
STATE OF ILLINOIS
DEPARTMENT OF TRANSPORTATION



HALF PLAN



BAR LAP
#5 - 2'-7"



NEAR PIER

NEAR MIDSPAN

CROSS SECTION
(Looking South • ϕ of Bridge)

NOTES:

- 1.) See Sheet B10 for Superstructure Details and Bill of Material.
- 2.) Bars Indicated thus 3x6-#5 etc. Indicates 3 lines of bars with 6 lengths per line.
- 3.) See Sheet B21 for Bar Splicer Details.
- 4.) For Section A-A and Diaphragm Details, see Sheet B11.

SUPERSTRUCTURE DECK
STRUCTURE NO. 006-0181

DESIGNED	SDH
CHECKED	JML
DRAWN	DJM
CHECKED	MSW

DATE 10/08/10

Farnsworth
GROUP, INC.
2709 McGraw Drive
Bloomington, Illinois 61704
309/663-8435, 309/663-1571 fax

SHEET NO. B9
23 SHEETS

F.A.P. RTE.	SECTION	COUNTY	TOTAL SHEETS	SHEET NO.
698	(101 BR)BR	BUREAU	47	23
FED. ROAD DIST. NO.		ILLINOIS FED. AID PROJECT		
CONTRACT NO. 66910				