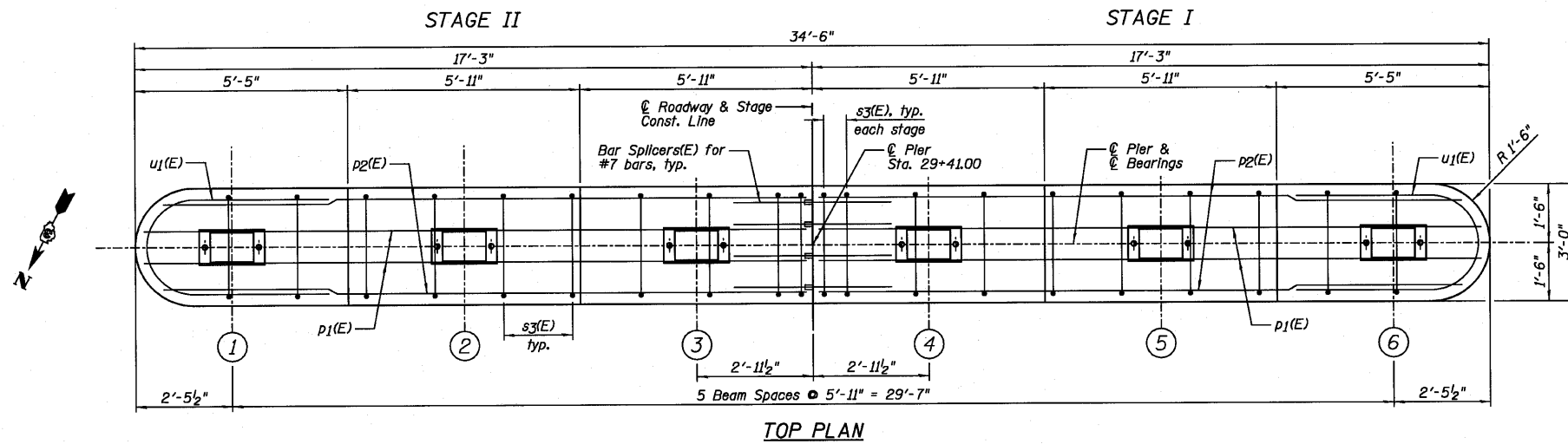
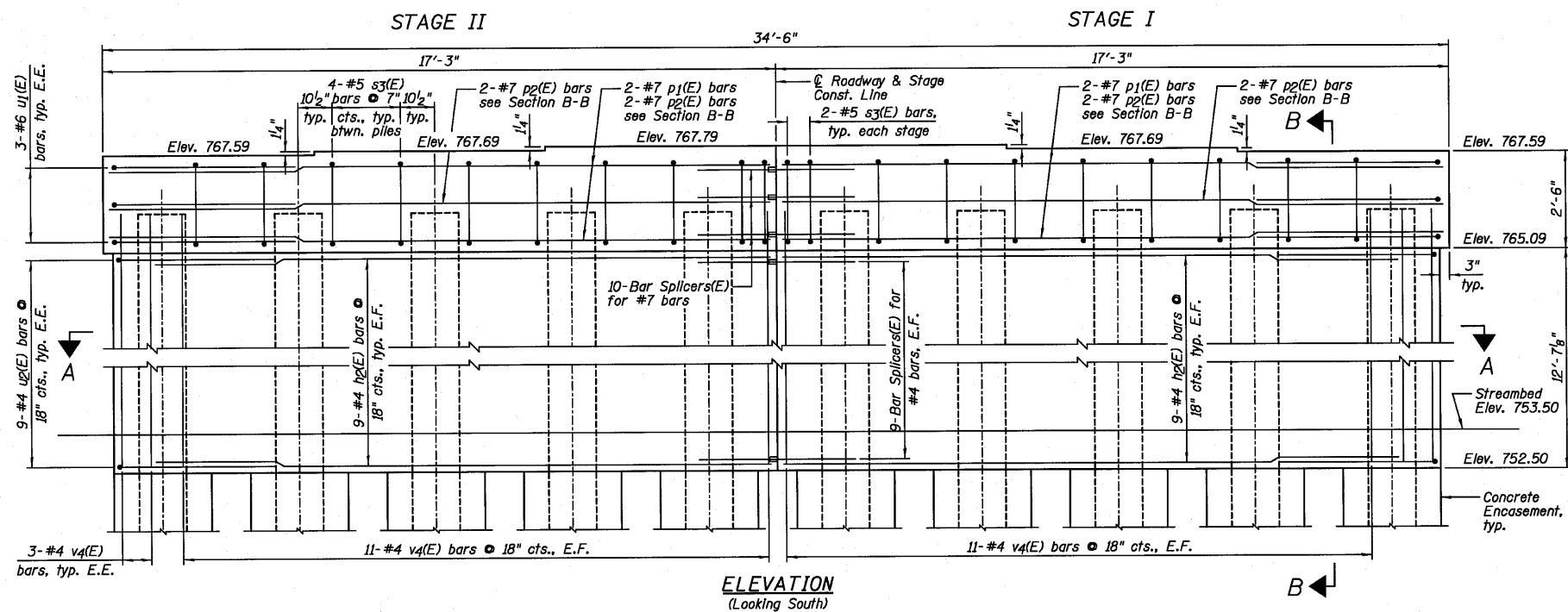


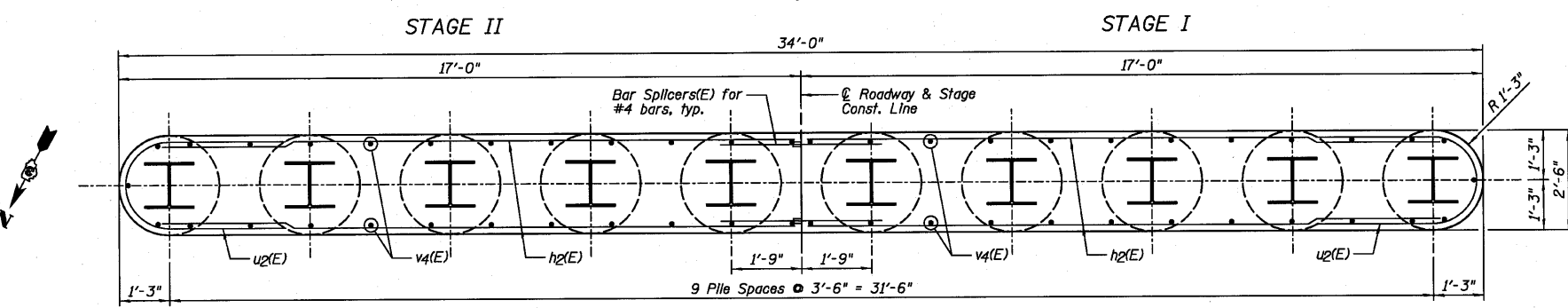
STATE OF ILLINOIS
DEPARTMENT OF TRANSPORTATION



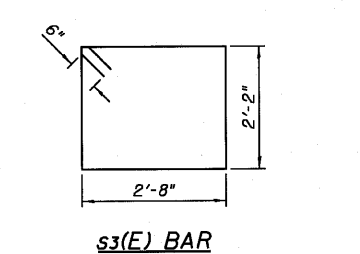
TOP PLAN



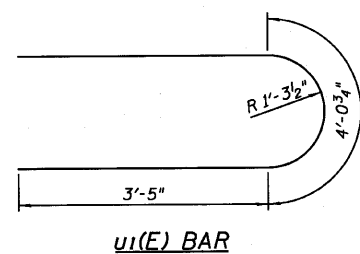
ELEVATION
(Looking South)



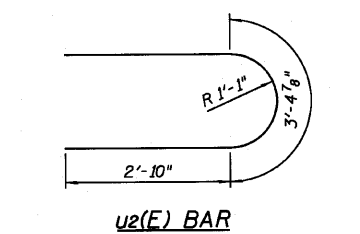
SECTION A-A



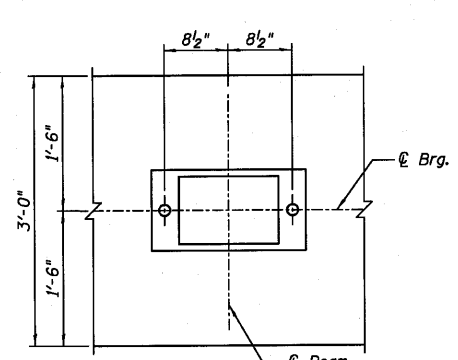
s3(E) BAR



u1(E) BAR



u2(E) BAR



TYPICAL ANCHOR BOLT
PLACEMENT DETAIL

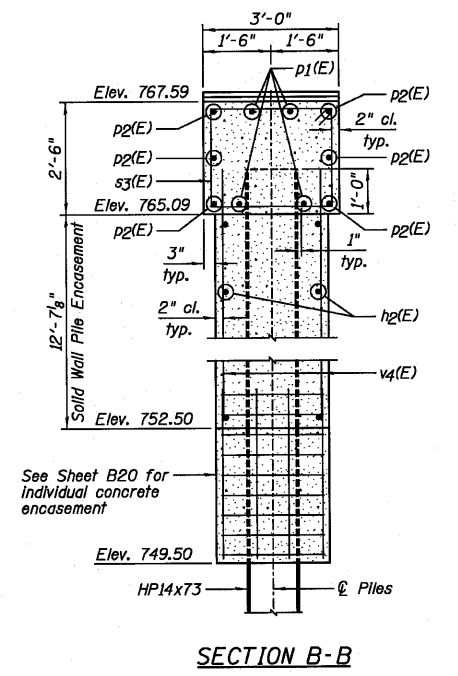
**PIER
BILL OF MATERIAL**

Bar	No.	Size	Length	Shape
h2(E)	36	#4	15'-9"	
p1(E)	8	#7	16'-10"	
p2(E)	12	#7	16'-4"	
s3(E)	36	#5	10'-8"	
u1(E)	6	#6	10'-11"	
u2(E)	18	#4	9'-1"	
v4(E)	50	#4	13'-9"	

Item	Unit	Quantity
Structure Excavation	Cu. Yd.	63
Concrete Structures	Cu. Yd.	48.8
Concrete Encasement	Cu. Yd.	5.5
Reinforcement Bars, Epoxy Coated	Pound	2,120
Furnishing Steel Piles HP14x73	Foot	360
Driving Piles	Foot	360
Test Pile Steel HP14x73	Each	1
Underwater Structure Excavation Protection - Location 1	Each	1

PILE DATA:

Item	Value
Pile Type and Size	Steel - HP14x73
Nominal Required Bearing	369 klps
Factored Resistance Available	203 klps
Estimated Pile Length	40 Feet
Number of Production Piles	9
Number of Test Piles	1



SECTION B-B

- NOTES:**
- 1.) Pour steps monolithically with cap.
 - 2.) If a portion of the pier wall or concrete encasement is under water, reinforcement may be placed under water into forms. Concrete shall be tremied according to Article 503.08 of the Standard Specifications to an elevation 1'-0" above the water line at the time of construction.
 - 3.) E.F. denotes Each Face and E.E. denotes Each End.
 - 4.) See Sheet B21 for Bar Splicer Details.

**PIER
STRUCTURE NO. 006-0181**

DESIGNED	SDH
CHECKED	JML
DRAWN	DJM
CHECKED	MSW
DATE	10/08/10

Farnsworth GROUP, INC. 2709 McGraw Drive Bloomington, Illinois 61704 309/663-8435, 309/663-1571 fax	SHEET NO. B19	F.A.P. RTE. 698	SECTION (101 BR)BR	COUNTY BUREAU	TOTAL SHEETS 47	SHEET NO. 33
	23 SHEETS	CONTRACT NO. 66910		FED. ROAD DIST. NO. ILLINOIS FED. AID PROJECT		