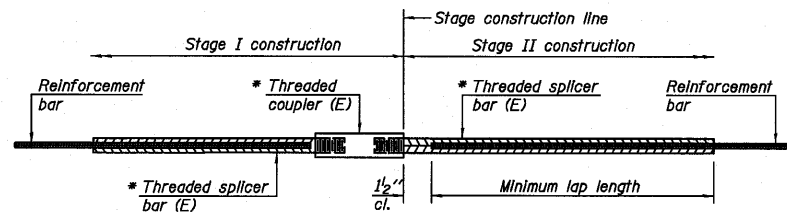


STATE OF ILLINOIS
DEPARTMENT OF TRANSPORTATION



STANDARD BAR SPLICER ASSEMBLY

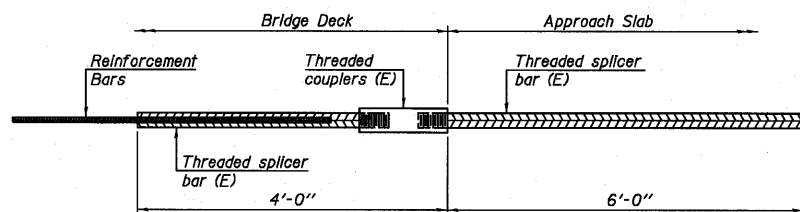
| Bar size to be spliced | Minimum Lap Lengths | | | | |
|------------------------|---------------------|---------|---------|---------|---------|
| | Table 1 | Table 2 | Table 3 | Table 4 | Table 5 |
| 3, 4 | 1'-5" | 1'-11" | 2'-1" | 2'-4" | 2'-3" |
| 5 | 1'-9" | 2'-5" | 2'-7" | 2'-11" | 2'-10" |
| 6 | 2'-1" | 2'-11" | 3'-1" | 3'-6" | 3'-4" |
| 7 | 2'-9" | 3'-10" | 4'-2" | 4'-8" | 4'-6" |
| 8 | 3'-8" | 5'-1" | 5'-5" | 6'-2" | 5'-10" |
| 9 | 4'-7" | 6'-5" | 6'-10" | 7'-9" | 7'-5" |

- Table 1: Black bar, 0.8 Class C
- Table 2: Black bar, Top bar lap, 0.8 Class C
- Table 3: Epoxy bar, 0.8 Class C
- Table 4: Epoxy bar, Top bar lap, 0.8 Class C
- Table 5: Epoxy bar, Top bar lap, Class B

Threaded splicer bar length = min. lap length + 1/2" + thread length

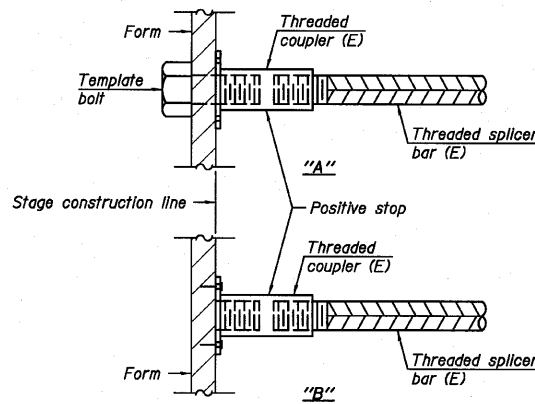
* Epoxy not required on Bar Splicer Assembly components used in conjunction with black bars.

| Location | Bar size | No. assemblies required | Table for minimum lap length |
|-----------------|----------|-------------------------|------------------------------|
| Top of Slab | #5 | 249 | Table 3 |
| Bottom of Slab | #5 | 174 | Table 3 |
| North Diaphragm | #6 | 8 | Table 5 |
| South Diaphragm | #6 | 8 | Table 5 |
| North Approach | #4 | 25 | Table 4 |
| North Approach | #5 | 86 | Table 3 |
| South Approach | #4 | 25 | Table 4 |
| South Approach | #5 | 86 | Table 3 |
| North Abutment | #7 | 10 | Table 4 |
| Pier | #7 | 10 | Table 4 |
| Pier | #4 | 18 | Table 3 |
| South Abutment | #7 | 10 | Table 4 |



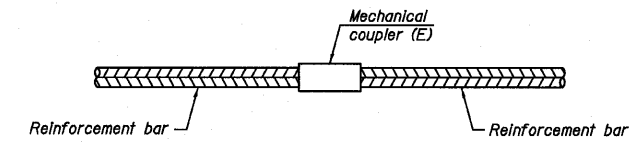
BAR SPLICER ASSEMBLY FOR #5 BAR ON INTEGRAL OR SEMI-INTEGRAL ABUTMENTS

No. required = 76



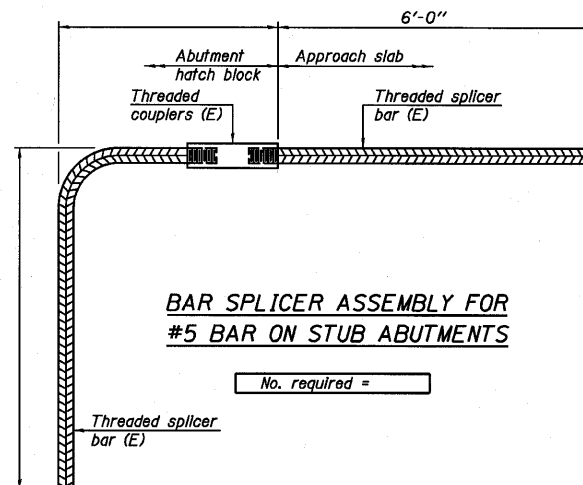
INSTALLATION AND SETTING METHODS

- "A": Set bar splicer assembly by means of a template bolt.
- "B": Set bar splicer assembly by nailing to wood forms or cementing to steel forms.
- (E): Indicates epoxy coating.



STANDARD MECHANICAL SPLICER

| Location | Bar size | No. assemblies required |
|----------|----------|-------------------------|
| | | |
| | | |
| | | |
| | | |



BAR SPLICER ASSEMBLY FOR #5 BAR ON STUB ABUTMENTS

No. required =

NOTES

- Splicer bars shall be deformed with threaded ends and have a minimum 60 ksi yield strength.
- All reinforcement shall be lapped and tied to the splicer bars.
- Bar splicer assemblies shall be epoxy coated according to the requirements for reinforcement bars. See Section 508 of the Standard Specifications.
- See special provision for Mechanical Splicers.
- See approved list of bar splicer assemblies and mechanical splicers for alternatives.

BAR SPLICER ASSEMBLY AND MECHANICAL SPLICER DETAILS
STRUCTURE NO. 006-0181

| | |
|----------|-----|
| DESIGNED | SDH |
| CHECKED | JML |
| DRAWN | DJM |
| CHECKED | MSW |

DATE 10/08/10

BSD-1

7-1-10

Farnsworth
GROUP, INC.
2709 McGraw Drive
Bloomington, Illinois 61704
309/663-8435, 309/663-1571 fax

SHEET NO. B21
23 SHEETS

| | | | | |
|---------------------|------------|------------------|--------------|-----------|
| F.A.P. RTE. | SECTION | COUNTY | TOTAL SHEETS | SHEET NO. |
| 698 | (101 BR)BR | BUREAU | 47 | 35 |
| CONTRACT NO. 66910 | | | | |
| FED. ROAD DIST. NO. | ILLINOIS | FED. AID PROJECT | | |