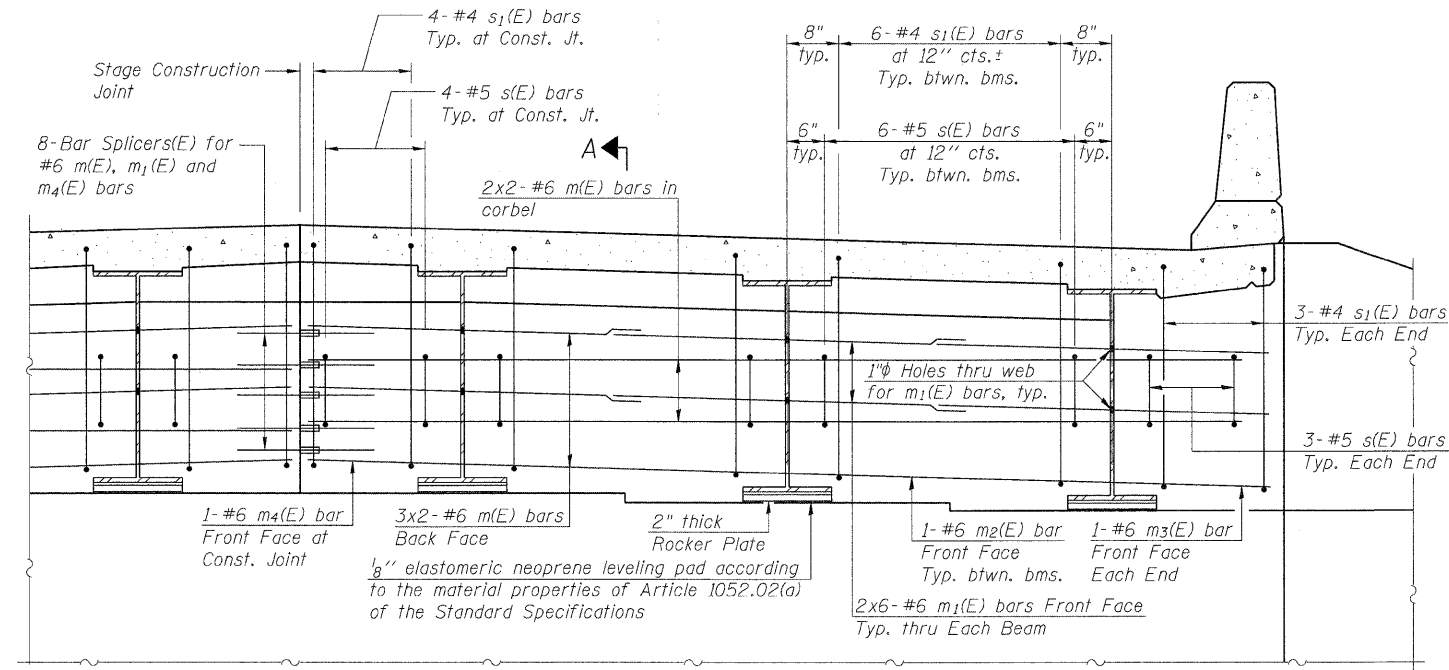


STATE OF ILLINOIS
DEPARTMENT OF TRANSPORTATION

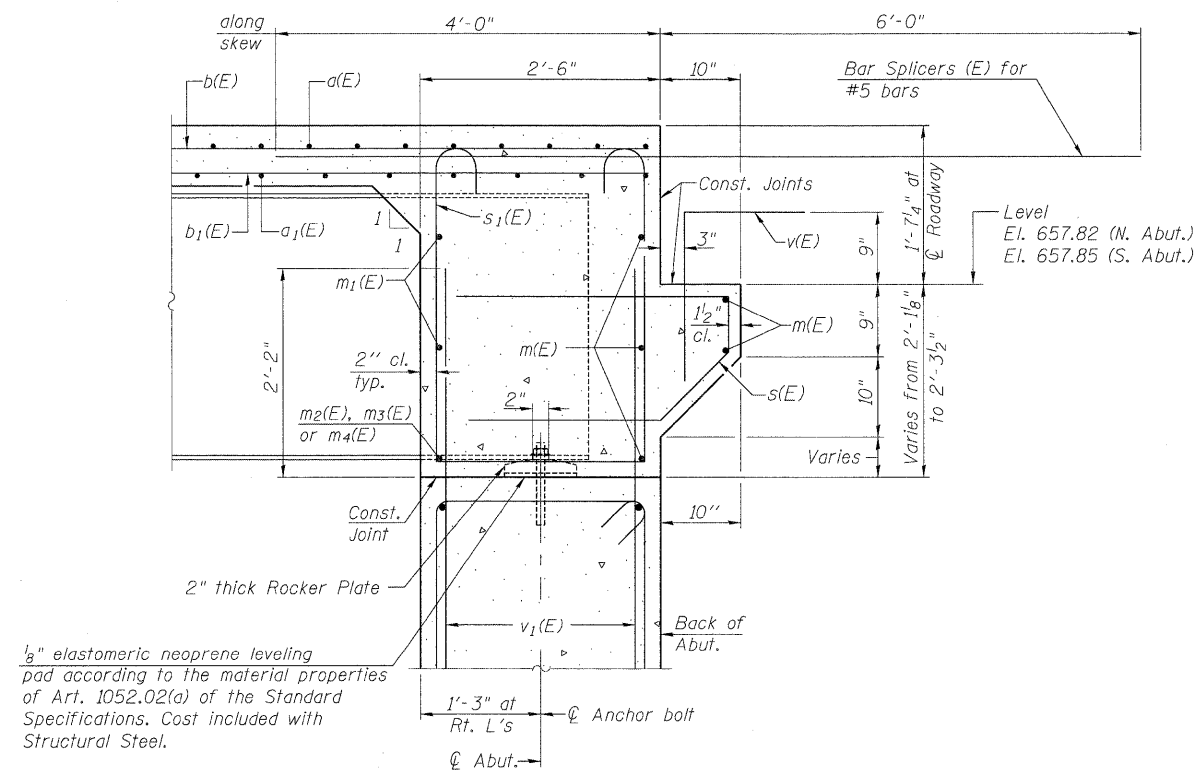


DIAPHRAGM ELEVATION AT ABUTMENT

Notes:

- Reinforcement bars in diaphragm are billed with superstructure on sheet 9 of 21.
- Concrete in diaphragm is included with Concrete Superstructure on sheet 9 of 21.
- For details of bars s(E), s₁(E) & v(E) see sheet 9 of 21.
- The s(E) and s₁(E) bars shall be placed parallel to the beams. Spacing for these bars shall be at right angles to the beams.
- For details of bars v₁(E) see sheet 15 of 21 and sheet 16 of 21.

MIN. BAR LAP
#6 bar = 3'-6"



SECTION A-A

Dimensions at right angles to abutment, except as shown.

INTEGRAL ABUTMENT
DIAPHRAGM DETAILS
STRUCTURE NO. 027-0099

ZROKA engineering
Zroka Engineering, P.C.
4216 North Hermitage
Chicago, IL 60613

DESIGNED	JLA
CHECKED	LAS
DRAWN	SAW
CHECKED	JLA

SI-DSI 11-1-09

SHEET NO. 10 OF 21 SHEETS	F.A.P. RTE.	SECTION	COUNTY	TOTAL SHEETS	SHEET NO.
	796	(106)BR-3	FORD	48	21
		SN 027-0099	CONTRACT NO. 66916		
		FED. ROAD DIST. NO. _	ILLINOIS	FED. AID PROJECT	