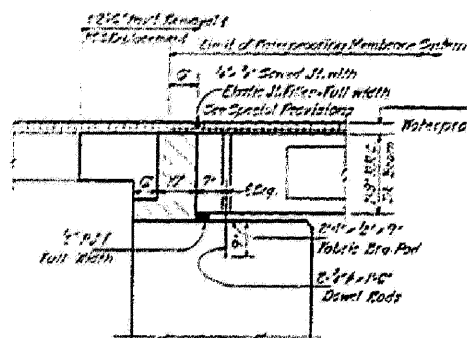
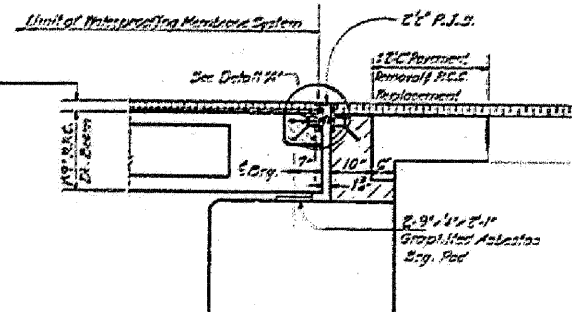


STATE OF ILLINOIS  
DEPARTMENT OF TRANSPORTATION

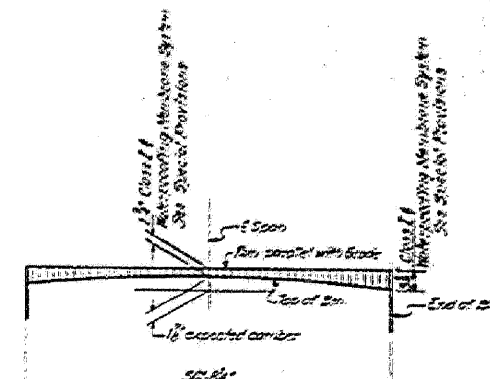
DATE	BY	CHKD	APPD	REV	SHEET NO. 3
10/6/2010	SAW	DAZ			7 SHEETS



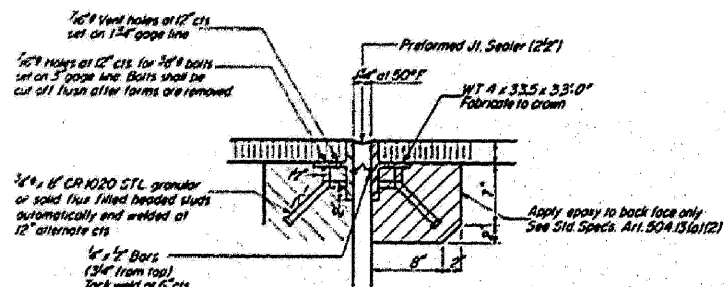
SEC. THRU NO. ABUT.



SEC. THRU SO. ABUT.



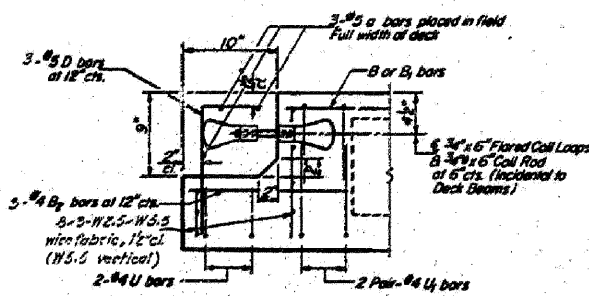
CAMBER DIAGRAM



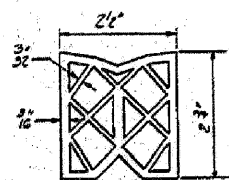
DETAIL "A"

NOTE: Dimensions are at right angles.  
Hatched areas to be poured after beams have been erected and joints grouted.  
Ends of beams shall be aligned at the expansion joints. Any level variations in the beam lengths shall be placed at the fixed joint. See End of Beam Detail for reinforcement.

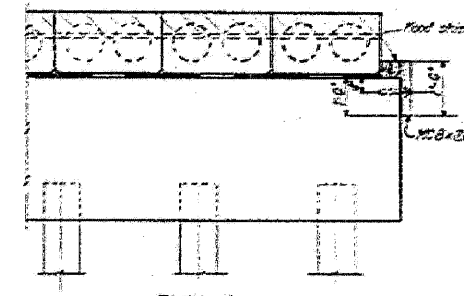
Hatched Area Reinforcement:  
on the beam see hatched with supports sheet #2  
on the abutments see hatched with abutment sheet #5 & #6



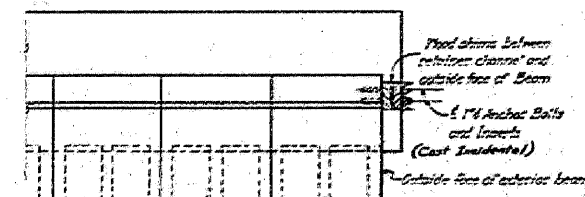
END OF BEAM (EXP. END)  
(Dimensions are at right angles)



PREFORMED JOINT SEALER (2 1/2")



ELEVATION



PLAN  
RETAINER FOR EXPANSION ENDS OF PPC DECK BAYS

**SUPERSTRUCTURE-DETAILS**  
**F.A.R.T. 736 SEC. 106 BR-3**  
**FORD COUNTY**  
**STA. 1711+31.00**

DESIGNED	P. A. Hoffmann
CHECKED	Robert H. Patterson
DRAWN	SAW
CHECKED	P.M.P.

EXAMINED	SAW
PASSED	
APPROVED	

FILE NAME =  
...66916-035-ExistPlans3.dgn

USER NAME = SAW	DESIGNED - RAC	REVISED -
PLOT SCALE = 50.0000' / 1" IN.	DRAWN - RAC	REVISED -
PLOT DATE = 10/6/2010	CHECKED - DAZ	REVISED -
	DATE - 09/03/10	REVISED -

STATE OF ILLINOIS  
DEPARTMENT OF TRANSPORTATION

**ZROKA**  
engineering

Zroka Engineering, P.C.  
4216 North Hermitage  
Chicago, IL 60613

SCALE: 1" = 50'

SHEET NO. 3 OF 10 SHEETS

EXISTING BRIDGE PLANS  
FOR INFORMATION ONLY

STA. 1707+00 TO STA. 1716+00

F.A.P. RTE. 796	SECTION (106) BR-3	COUNTY FORD	TOTAL SHEETS 48	SHEET NO. 35
				CONTRACT NO. 66916
ILLINOIS FED. AID PROJECT				