

F.A.P. RTE.	SECTION	COUNTY	TOTAL SHEETS	SHEET NO.
310	(28B)BR-1	WARREN	7	1
		ILLINOIS	CONTRACT NO. 68661	

FOR INDEX OF SHEETS, SEE SHEET NO. 2  
FOR STANDARDS, SEE SHEET NO. 2

STATE OF ILLINOIS  
DEPARTMENT OF TRANSPORTATION  
DIVISION OF HIGHWAYS  
**PROPOSED  
HIGHWAY PLANS**

FAP ROUTE 310 (US 67)  
(28B)BR-1  
PROJECT NHF-0310(142)  
WARREN COUNTY  
C-94-198-06

STRUCTURE REPLACEMENT  
4.0 MILES NORTH OF MONMOUTH

D-94-130-06

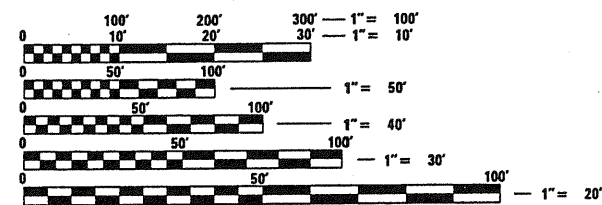
ENGINEERS SIGNATURE BOX

DATE SIGNED:  
RYAN M. BRADLE, P.E.  
IL REG. NO. 062-055671  
EXP. DATE: 11/30/2011

PREPARED BY:



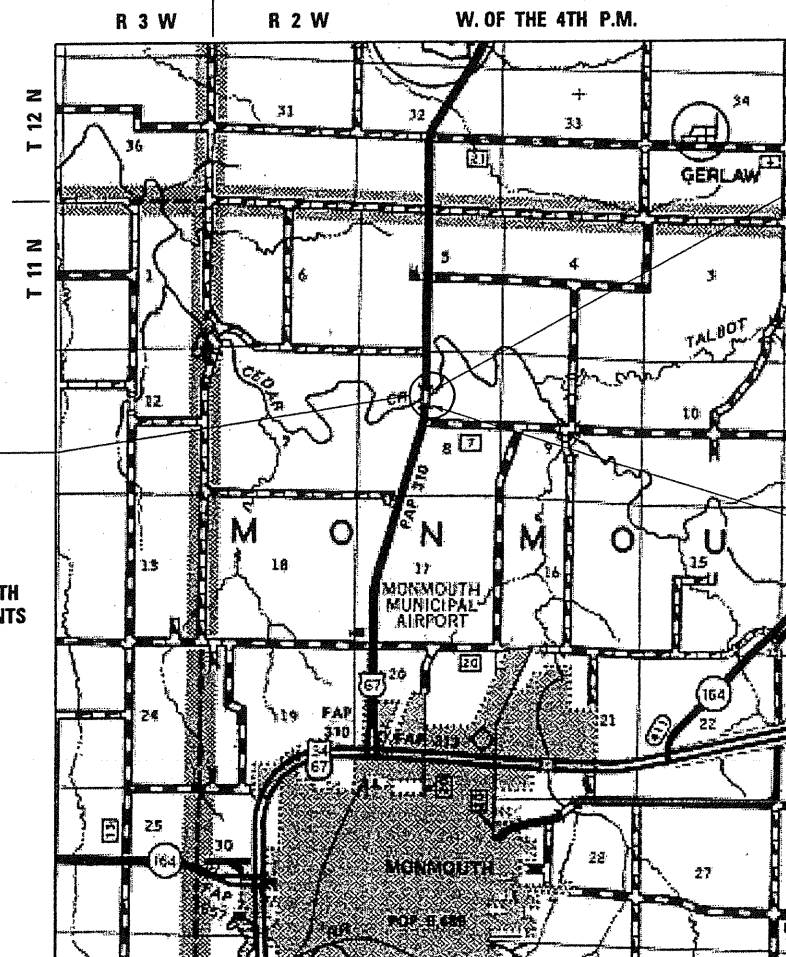
7615 NORTH HARKER DRIVE  
PEORIA, ILLINOIS 61615  
TEL 309-693-7615  
FAX 309-693-7616  
CONTACT: RICK ANDERSON



FULL SIZE PLANS HAVE BEEN PREPARED USING STANDARD ENGINEERING SCALES. REDUCED SIZED PLANS WILL NOT CONFORM TO STANDARD SCALES. IN MAKING MEASUREMENTS ON REDUCED PLANS, THE ABOVE SCALES MAY BE USED.

J.U.L.I.E.  
JOINT UTILITY LOCATION INFORMATION FOR EXCAVATION  
1-800-892-0123  
OR 811

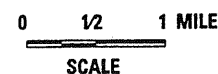
MONMOUTH TOWNSHIP SECTION 8  
PROJECT ENGINEER RICH DOTSON  
PROJECT MANAGER TERRISA WORSFOLD  
CONTRACT NO. 68661  
CATALOG NO. 033405-00D



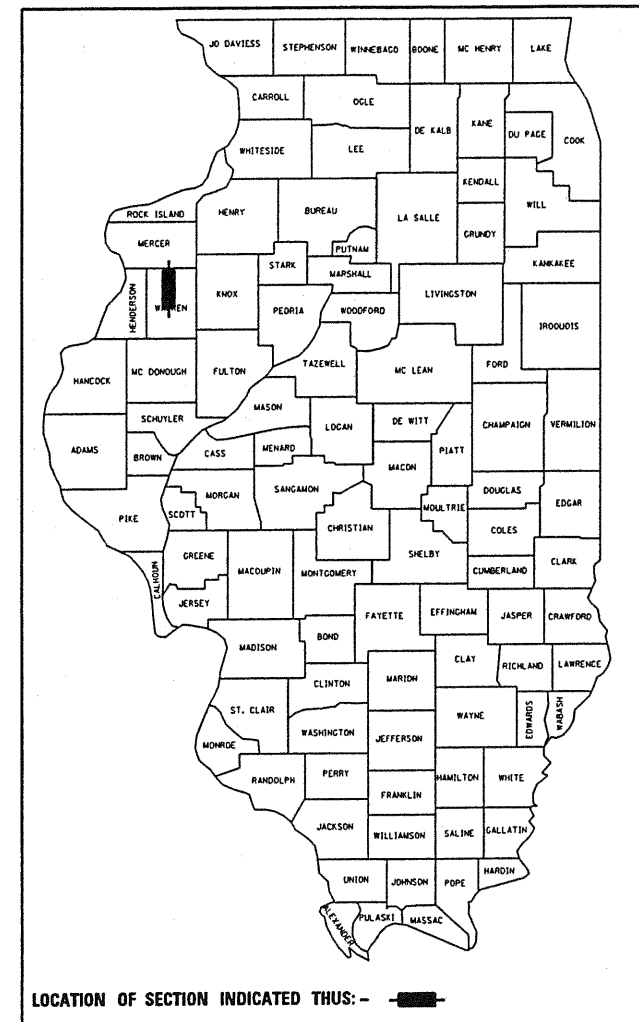
EXIST. SN 094-0004  
PROP. SN 094-0051  
STA. 1179+70.00  
EXISTING 2-SPAN PPC DECK BEAM  
BRIDGE ON US 67 OVER  
CEDAR CREEK WILL BE REPLACED  
WITH A 3-SPAN I-BEAM BRIDGE WITH  
CONCRETE DECK AND OPEN ABUTMENTS

SECTION (28B)BR-1 BEGINS  
STA. 1174+50.00

SECTION (28B)BR-1 ENDS  
STA. 1184+00.00



GROSS LENGTH = 950 FT. = 0.180 MILE  
NET LENGTH = 950 FT. = 0.180 MILE



FUNCTIONAL CLASSIFICATION: OTHER PRINCIPAL ARTERIAL  
DESIGN SPEED: 55 MPH  
POSTED SPEED: 55 MPH  
ADT: 3350 (2009)  
PV: 86.6% SU: 3.7% MU: 9.7%

STATE OF ILLINOIS  
DEPARTMENT OF TRANSPORTATION  
DIVISION OF HIGHWAYS

SUBMITTED 10/21/2010  
[Signature]  
DEPUTY DIRECTOR OF HIGHWAYS, REGION ENGINEER

Dec 10 2010  
Scott E. Stott, P.E., B.C.  
ENGINEER OF DESIGN AND ENVIRONMENT

Dec 10 2010  
Christine M. Reeder  
DIRECTOR OF HIGHWAYS, CHIEF ENGINEER

PRINTED BY THE AUTHORITY  
OF THE STATE OF ILLINOIS