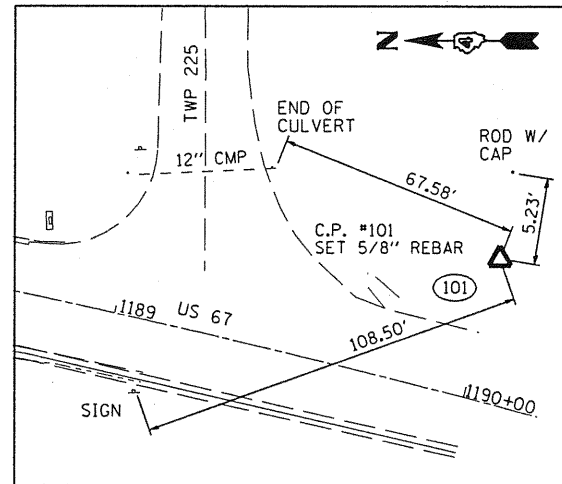
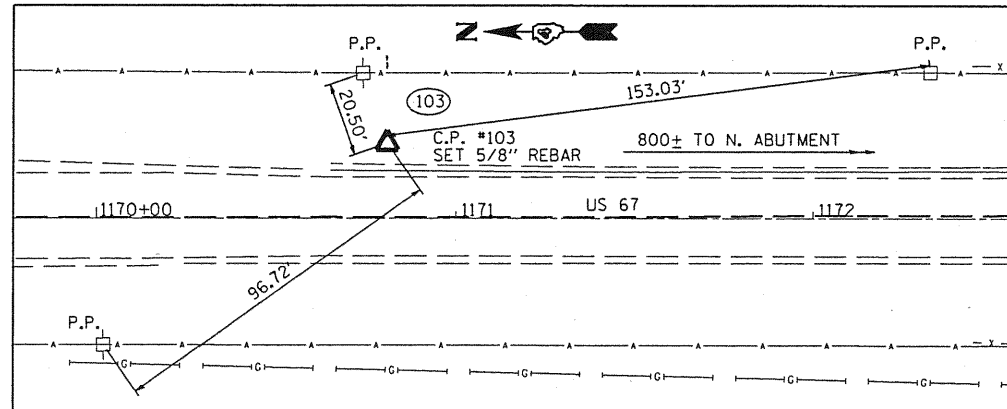


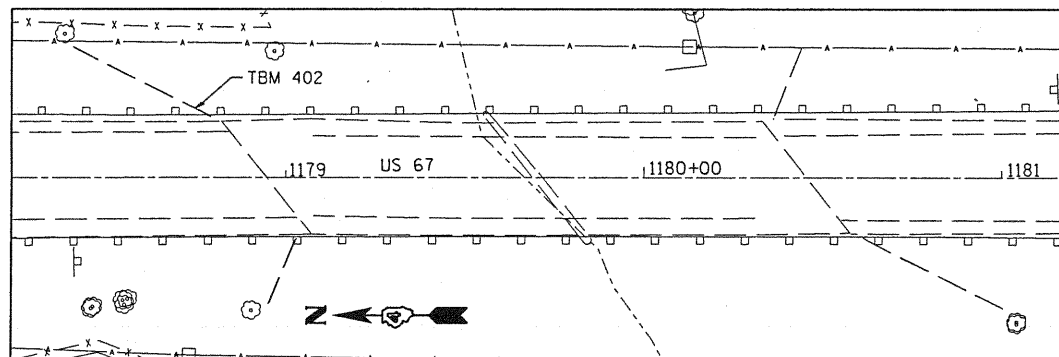
NOT TO SCALE



NOT TO SCALE



NOT TO SCALE



NOT TO SCALE

BENCHMARK INFORMATION

TBM #402: CHISELED "□" ON NE WINGWALL OF CEDAR CREEK BRIDGE STRUCTURE
 STA. 1178+74.69, 19.11' LT
 ELEV. = 663.60

HORIZONTAL CONTROL POINTS (GROUND COORDINATES)							
POINT	NORTH	EAST	ELEVATION	CHAIN	STATION	OFFSET	DESCRIPTION
101	1563220.416	2165757.663	715.627	US 67	1190+00.31	39.60' LT.	SET 5/8" REBAR
102	1565927.364	2165840.196	703.25	US 67	1162+94.44	34.95' RT.	SET 5/8" REBAR
103	1565139.749	2165876.942	693.33	US 67	1170+80.93	20.87' LT.	SET 5/8" REBAR

FILE NAME = S:\237\2008\23708002\US67CedarCreek\CAD	USER NAME = rmbredle	DESIGNED RMB	REVISED -
DD\CADD Sheets\0468661-sht-ATB.dgn	DRAWN BAB	REVISOR -	REVISOR -
PLOT SCALE = 40.0000' / IN.	CHECKED RJA	DATE 09-27-2010	REVISOR -
PLOT DATE = 10/23/2010			

**STATE OF ILLINOIS
 DEPARTMENT OF TRANSPORTATION**

**US 67 OVER CEDAR CREEK
 ALIGNMENT, TIES AND BENCHMARKS**

SCALE: SHEET NO. OF SHEETS

F.A.P. RTE.	SECTION	COUNTY	TOTAL SHEETS	SHEET NO.
310	(28B)BR-1	WARREN	71	10
CONTRACT NO. 68661				
ILLINOIS FED. AID PROJECT				