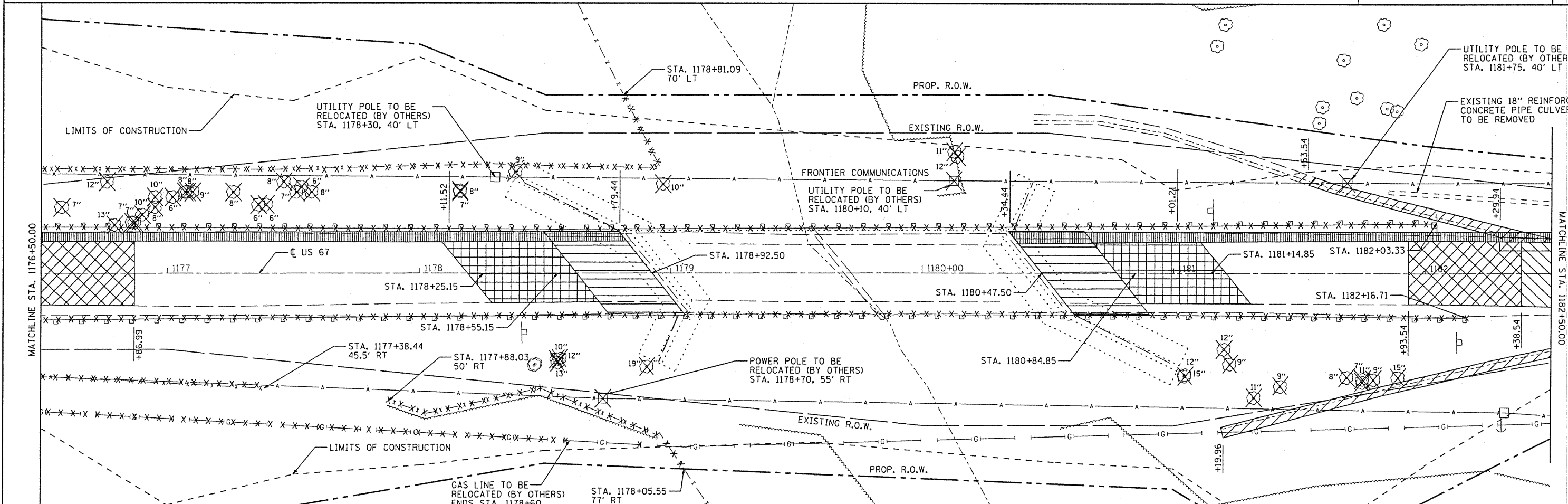
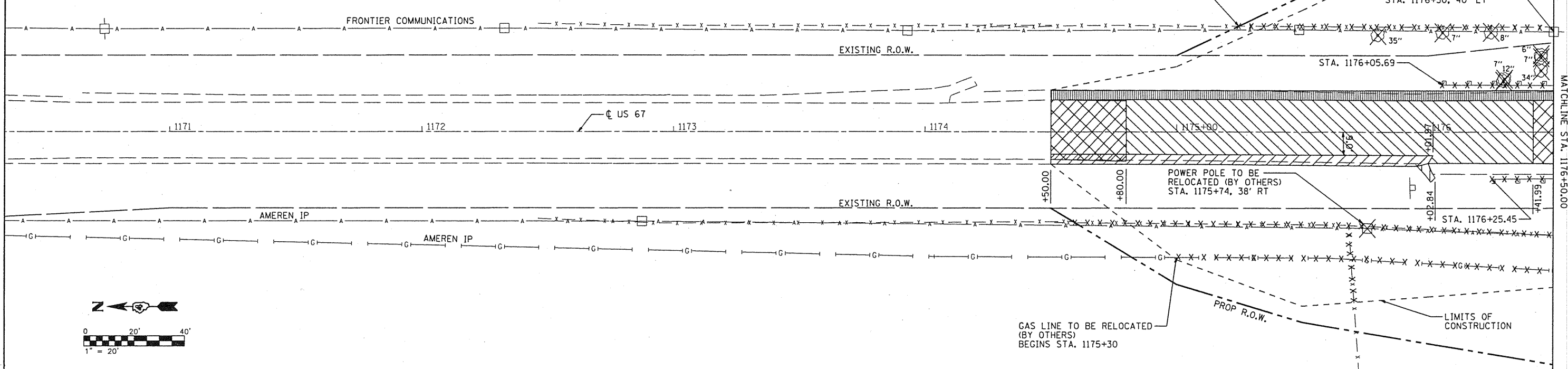


REMOVAL LEGEND

- | | | | | | | | |
|--|--|--|---|--|---|--|--|
| | GUTTER REMOVAL | | PAVEMENT REMOVAL | | PAVED SHOULDER REMOVAL
(PORTION OF HMA BASE COURSE
WIDENING, 9" INSTALLED DURING STAGE 1) | | FENCE REMOVAL |
| | TREE REMOVAL | | DRIVEWAY PAVEMENT REMOVAL | | | | RELOCATE POWER/TELEPHONE POLE
(BY OTHERS) |
| | HOT-MIX ASPHALT SURFACE
REMOVAL-BUTT JOINT | | APPROACH PAVEMENT REMOVAL | | | | GAS LINE TO BE RELOCATED
(BY OTHERS) |
| | HOT-MIX ASPHALT SURFACE
REMOVAL, VARIABLE DEPTH | | PAVEMENT REMOVAL
(PORTION OF BASE COURSE
WIDENING, 9" INSTALLED DURING STAGE 1) | | | | GUARDRAIL REMOVAL |



FILE NAME = S:\237\2009\23788002\US67CedarCreek\CD	USER NAME = rmbrodle	DESIGNED RMB	REVISED -	STATE OF ILLINOIS DEPARTMENT OF TRANSPORTATION	US 67 OVER CEDAR CREEK REMOVAL PLAN			F.A.P. RTE. 310	SECTION (28B)BR-1	COUNTY WARREN	TOTAL SHEETS 71	SHEET NO. 12
CD\CADD Sheets\0468661-shr-rem1.dgn	DRAWN BAB	REVISED -	REVISED -		SCALE:	SHEET NO. OF SHEETS	STA. 1170+35.00 TO STA. 1182+50.00	CONTRACT NO. 68661				
PLOT SCALE = 40,0000' / IN.	CHECKED RJA	REVISED -	REVISED -		ILLINOIS FED. AID PROJECT							
PLOT DATE = 10/23/2010	DATE 09-27-2010	REVISED -	REVISED -									