

* NOTE: IMPACT ATTENUATORS SHALL BE SUCH THAT THEY ARE EASILY RELOCATED FOR PROFILE BUILDUP AND RESURFACING OPERATIONS AND THEN RETURNED TO THEIR ORIGINAL POSITIONS AT THE END OF THE DAY.

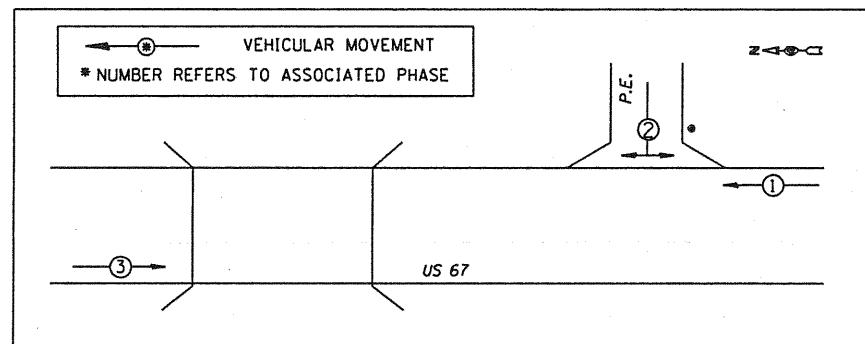
STAGING LEGEND

- TYPE III BARRICADE WITH FLASHING LIGHTS
- TEMPORARY CONCRETE BARRIER
- DRUM WITH STEADY BURNING LIGHTS
- DETECTOR LOOPS
- TEMPORARY RUMBLE STRIPS
- TRAFFIC SIGNAL
- DOUBLE VERTICAL PANEL
- SIGN
- GUARDRAIL MARKERS

TEMPORARY BRIDGE TRAFFIC SIGNAL NOTES:

1. AT THE CONTRACTOR'S OPTION, TEMPORARY PORTABLE BRIDGE TRAFFIC SIGNALS MAY BE USED IN PLACE OF TEMPORARY BRIDGE TRAFFIC SIGNALS.
2. TRAFFIC CONTROL SHALL BE IN ACCORDANCE WITH STANDARD 701321 EXCEPT WHERE MODIFIED ON THIS PLAN SHEET.
3. THREE PHASE SIGNAL OPERATION IS REQUIRED. THE ENGINEER OF TRAFFIC SHALL APPROVE ALL TIMING PARAMETERS.
4. STOP BAR PLACEMENT, TEMPORARY CONCRETE BARRIER, AND SIGNAL PLACEMENT/DETAILS INCLUDING ENTRANCE SIGNALS SHALL BE AS SHOWN OR AS DIRECTED BY THE ENGINEER.
5. ADVANCE WARNING SIGNS ARE REQUIRED AS SHOWN. THE CONTRACTOR SHALL FURNISH AND INSTALL SOLAR POWERED YELLOW FLASHERS ON THE ADVANCE SIGNAL HEAD SIGNS FOR MAINLINE. THE CONTRACTOR SHALL RETURN THE FLASHERS TO THE DEPARTMENT UPON REMOVAL OF THE TEMPORARY BRIDGE SIGNALS.
6. ALL TRAFFIC SIGNAL AND ADVANCE WARNING FLASHER SECTIONS SHALL HAVE 12" DIAMETER LENSES.
7. THE TEMPORARY TRAFFIC SIGNAL HEADS SHALL BE PLACED AS INDICATED ON THE PLANS OR AS DIRECTED BY THE ENGINEER.
8. THE TEMPORARY TRAFFIC SIGNAL INSTALLATION SHALL CONFORM TO ALL M.U.T.C.D. REQUIREMENTS.
9. THE CONTRACTOR, AT HIS OPTION, MAY ELECT TO UTILIZE MICROWAVE DETECTORS FOR BOTH MAINLINE APPROACHES.
10. ALL LABOR AND MATERIALS REQUIRED TO COMPLY WITH THESE REQUIREMENTS AND PLAN SHEET DETAILS SHALL BE INCLUDED IN THE PRICE FOR THE TEMPORARY BRIDGE SIGNAL INSTALLATION. THERE WILL BE NO ADDITIONAL COMPENSATION.

TEMPORARY PHASE DIAGRAM



TRAFFIC SIGNAL LEGEND

- TEMPORARY PEDESTRIAN PUSH-BUTTON
- 3 SEC. SIGNAL HEAD W/ BACKPLATE

SUGGESTED SEQUENCE OF CONSTRUCTION:

1. CONDUCT ALL CONSTRUCTION ACTIVITIES ASSOCIATED WITH THE PROPOSED PIPE CULVERT, GUTTER OUTLET (SPECIAL) #2, AND PAVED DITCH, TYPE A-15 LOCATED NEAR THE RESIDENCE ON THE LEFT FROM STA. 1181+50.00 TO STA. 1184+00.00.
2. USE STANDARD 701201 TO CONSTRUCT THE BASE COURSE WIDENING, 9" FROM STA. 1174+50.00 TO STA. 1178+82.43, STA. 1180+34.44 TO STA. 1182+70.57, AND STA. 1182+29.83 TO STA. 1184+00.00 LT.
3. USE STANDARD 701321 FOR BRIDGE, APPROACH PAVEMENT, AND CONNECTOR PAVEMENT WORK.
4. REMOVE STAGE 1 PORTION OF THE EXISTING STRUCTURE, GUARDRAIL, PAVEMENT, AND SHOULDERS.
5. CONSTRUCT STAGE 1 PORTION OF THE PROPOSED BRIDGE INCLUDING APPROACH PAVEMENTS, CONNECTOR PAVEMENTS, RIPRAP, GUARDRAIL, HMA SHOULDERS, BINDER COURSE, AND SURFACE COURSE.

FILE NAME = S:\237\2008\23708002\US67CedarCreek\CD	USER NAME = rmbredle	DESIGNED <i>RMB</i>	REVISED -
DD\CADD Sheets\0468661-sh1-staging.dgn		DRAWN <i>BAB</i>	REVISED -
PLOT SCALE = 48,002' / IN.		CHECKED <i>RJA</i>	REVISED -
PLOT DATE = 10/23/2010		DATE <i>09-27-2010</i>	REVISED -

**STATE OF ILLINOIS
DEPARTMENT OF TRANSPORTATION**

**US 67 OVER CEDAR CREEK
STAGING PLAN - STAGE 1 CONSTRUCTION**

SCALE: SHEET NO. OF SHEETS STA. 1182+50.00 TO STA. 1188+35.00

F.A.P. RTE. 310	SECTION (28B)BR-1	COUNTY WARREN	TOTAL SHEETS 71	SHEET NO. 18
CONTRACT NO. 68661				
ILLINOIS FED. AID PROJECT				